

# Architectural Designs ...selling quality house plans for over 30 years.

Plan W80177PM



House plans are Copyright © 2009 by our architects and designers.

Style: Canadian, Metric, Split Level

Total Living Area: 2935

Main Flr.: 1959

2nd Flr.: 976

Total Square Feet: 3,525 sq. ft.

Attached Garage: 2 Car, 590 sq. ft.

Bedrooms: 5

Full Bathrooms: 3

Half Bathrooms: 1

Width: 56'

Depth: 48'

Maximum Ridge Height: 33'2"

Exterior Walls: 2x6

Ceiling Height:

    Main Floor: 8'

    2nd Floor: 8'

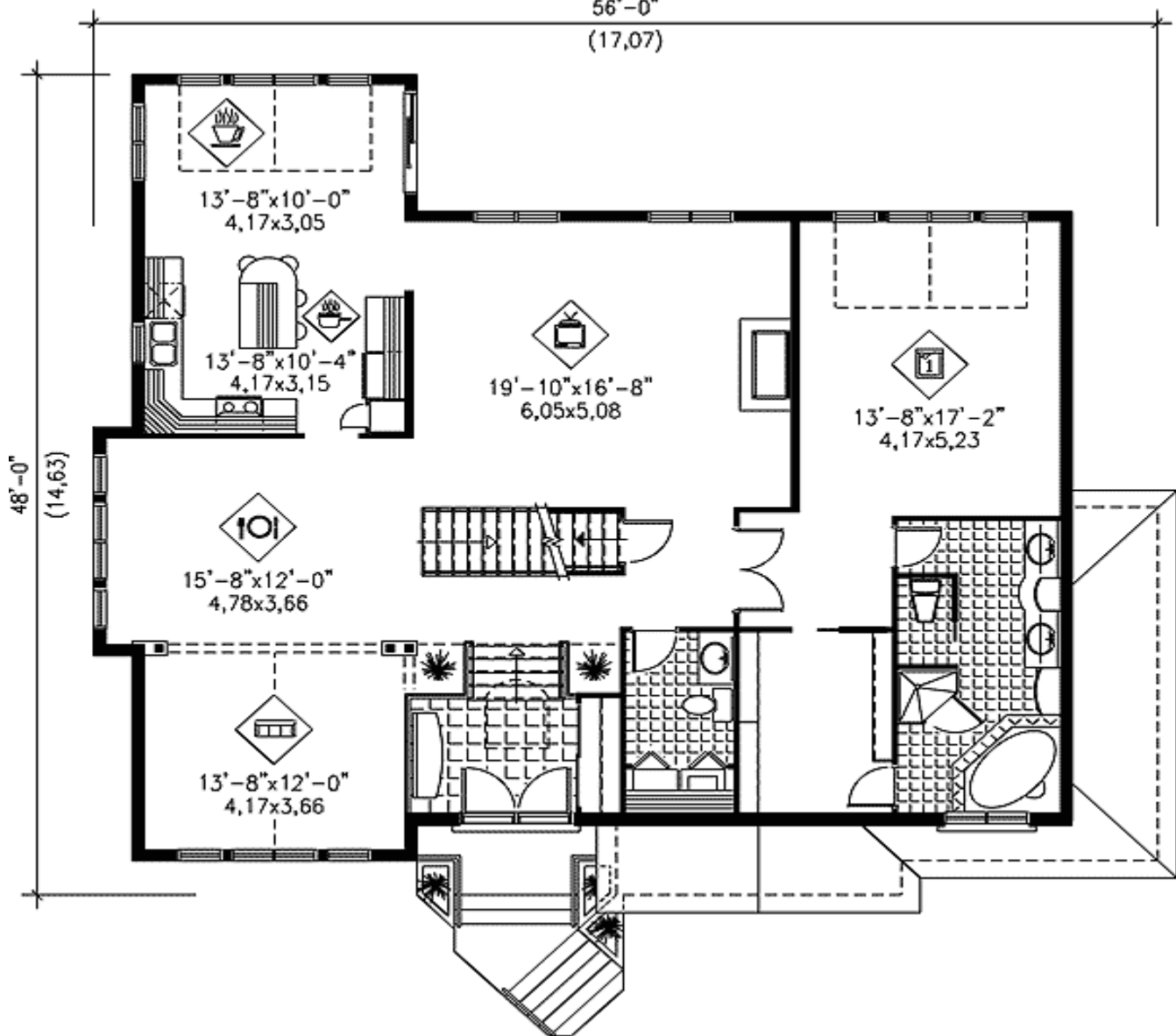
Standard Foundations: Basement

Special Features: Sloping Lot, CAD Available, PDF

One Set	Five Sets	Eight Sets	Reproducible	PDF File	CAD
\$795	\$890	\$900	\$1,170	\$1,170	\$1,780

## Main Level

56'-0"  
(17,07)



## 2nd Level

