

# Architectural Designs ...selling quality house plans for over 30 years.

Plan W5008CZ: Designed for Casual Living



House plans are Copyright © 2009 by our architects and designers.

- A covered front porch outlined by high arches, a gable and double columns hints at the casual lifestyle to be found within this traditional split-bedroom design.
- The open entry immediately welcomes guests into the home. A formal dining room is placed to one side. Straight ahead is the great room with its fireplace and 10-foot ceiling, providing a setting for cozy, comfortable living. All other ceilings rise for nine feet.
- An angled island with a snack bar separates the kitchen from both the great room and the breakfast room. Notable in this area are the pantry closet and built-in desk in the kitchen, as well as the transom windows in the breakfast room.
- A vestibule hides the sprawling master suite, housed in its own wing. A bay window offers sitting space in the bedroom, while the compartmented bath contains every amenity: a spacious walk-in closet, a corner garden tub, a separate shower and twin vanities with knee space in between.
- Two family bedrooms and the other full bath are sited on the other side of the house.
- Foundation: basement standard.

Style: Traditional

Total Living Area: 1784

Main Flr.: 1784

Total Square Feet: 2,260 sq. ft.

Attached Garage: 2 Car, 476 sq. ft.

Bedrooms: 3

Full Bathrooms: 2

Width: 57'4"

Depth: 53'

Maximum Ridge Height: 23'

Exterior Walls: 2x4

Optional Exterior Walls: 2x6 \$150

Ceiling Height:

Main Floor: 9'

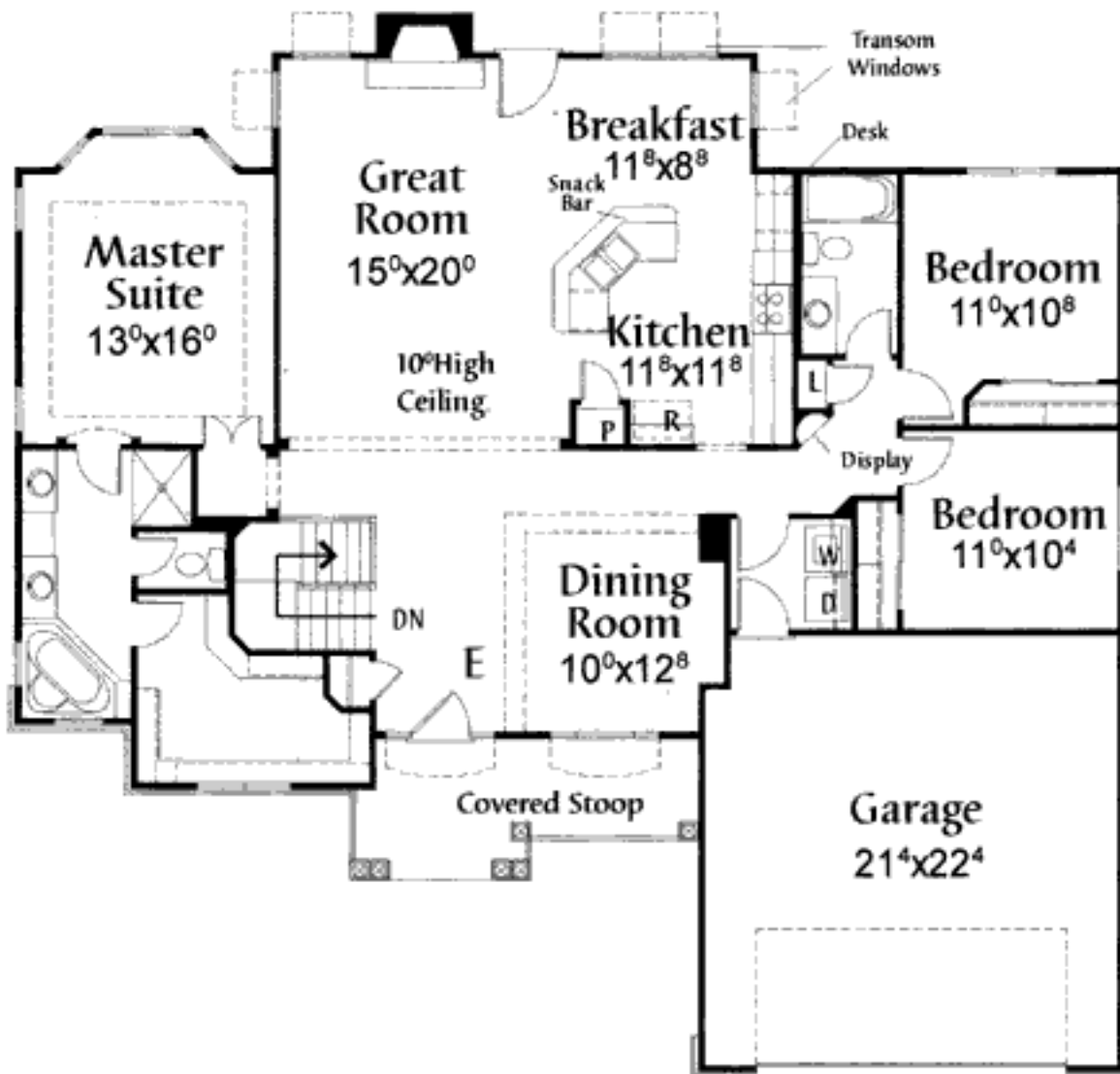
Standard Foundations: Basement

Alternate Foundations: Slab (\$300), Crawl (\$200)

Special Features: CAD Available, 1st Floor Master Suite, Split Bedrooms

One Set	Five Sets	Eight Sets	Reproducible	CAD
\$645	\$795	\$885	\$795	\$2,500

## Main Level



Rear View

