

# Architectural Designs ...selling quality house plans for over 30 years.

Plan W4645PR: Updated Carriage House



House plans are Copyright © 2009 by our architects and designers.

- Incorporating a standing seam metal roof and an upper-level porch for added allure, this updated version of a classic captures the charm of the traditional carriage house.
- The open plan garage downstairs (not shown) offers plenty of room for a workshop or storage.
- The upstairs expanse can serve a variety of functions, including office, studio or guest apartment. This level features; a spacious living-dining room, a generous kitchen with walk-in pantry and pass through counter, a bedroom with walk in closet, and a compartmented bath with linen 'laundry closet.
- Bedroom amenities include a French door to the porch and private access to the bathroom.

Style: Carriage, Garage

Total Living Area: 885

2nd Flr.: 885

Total Square Feet: 1,700 sq. ft.

Attached Garage: 2 Car, 815 sq. ft.

Bedrooms: 1

Full Bathrooms: 1

Width: 34'

Depth: 30'8"

Maximum Ridge Height: 30'

Exterior Walls: 2x4

Ceiling Height:

Main Floor: 9'

2nd Floor: 8'

Other: 12' Vaulted Living Room & Bedroom  
Standard Foundations: Slab

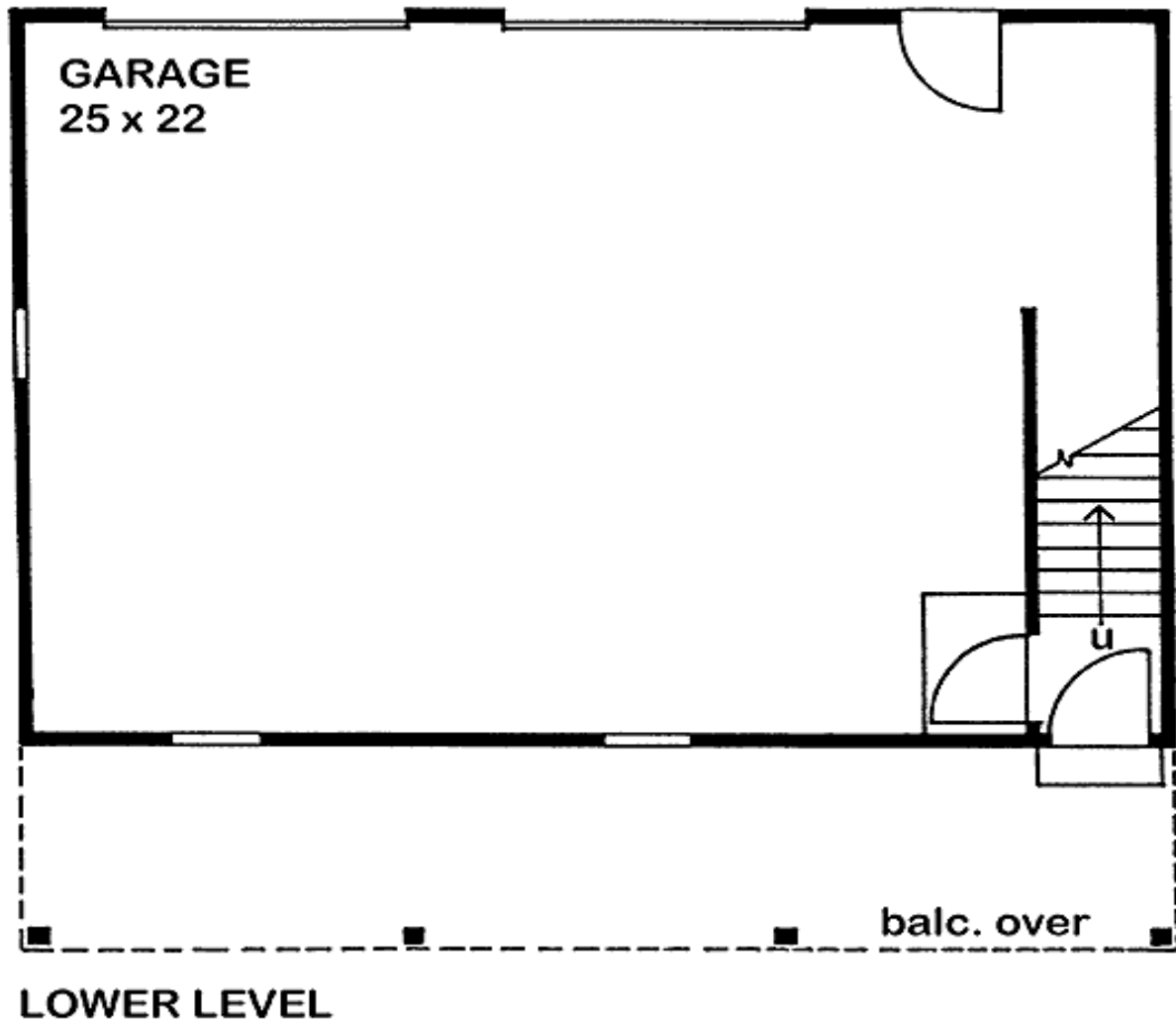
One Set  
\$395

Five Sets  
\$460

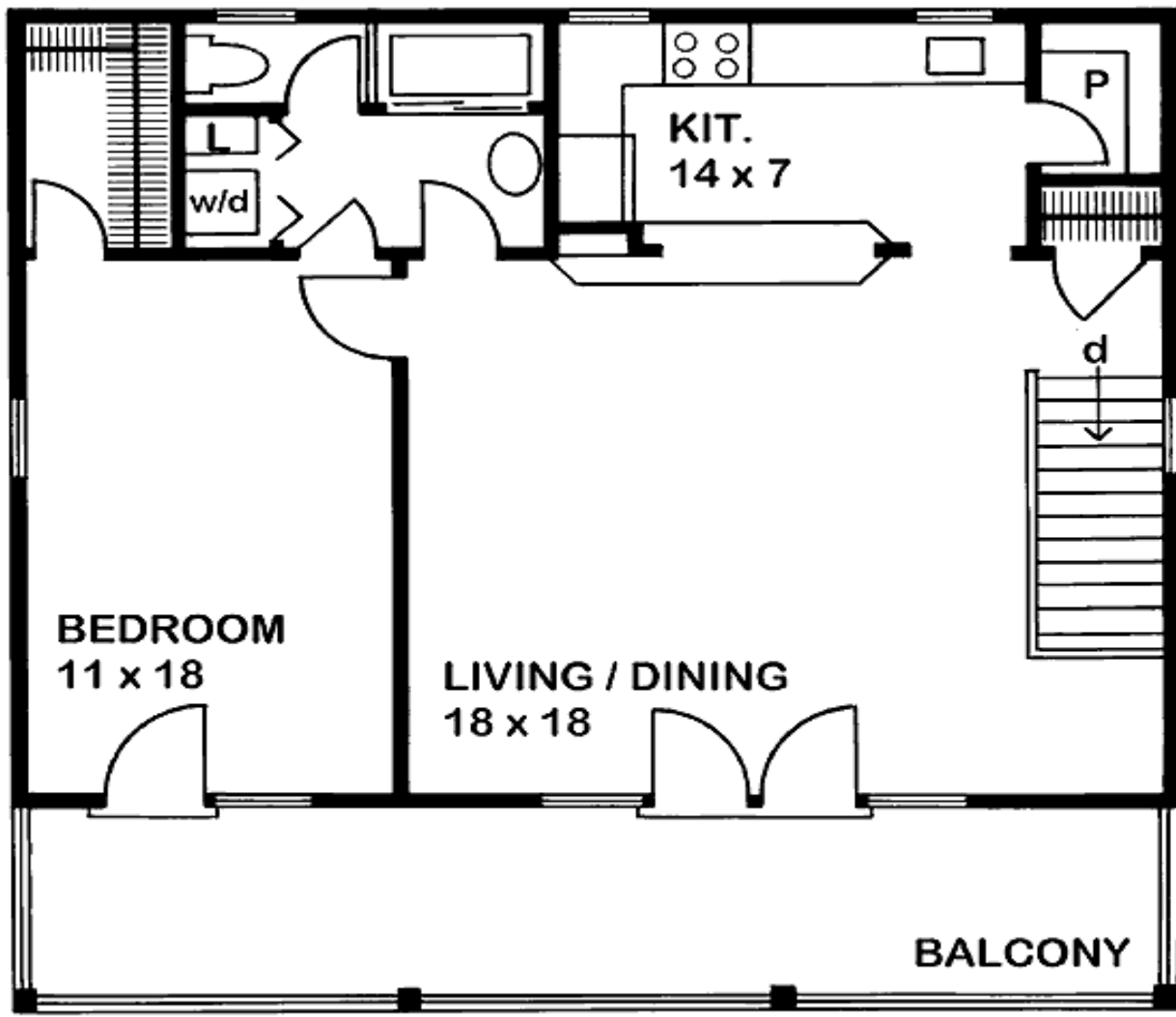
Eight Sets  
\$505

Reproducible  
\$605

Main Level



2nd Level



**UPPER LEVEL**

Rear View



Front Elevation