

Architectural Designs ...selling quality house plans for over 30 years.

Plan W31001D: Covered Porch and Covered Patio



House plans are Copyright © 2009 by our architects and designers.

- A covered porch in front and a covered patio in back offer outdoor living space at this country home, where the side-entry garage suits the design to a wide or corner lot.
- A feeling of open space is created by the great room, dining room set off by columns and the breakfast room/kitchen area. There is a large pantry off the breakfast area.
- In the master suite, a bayed sitting area and two walk-in closets are featured. The master bath includes a garden tub and separate shower.
- Windows across the length of the master bedroom and great room offer backyard views.
- Ceilings: 9' standard.
- Foundation: basement, slab or crawl space. Specify when ordering.
- Related Plans: For an alternate version, see house plan 3153D.
- Get more room with a second story with house plan 31156D (2,876 sq. ft.).

Style: Country, Farmhouse

Total Living Area: 1890

Main Flr.: 1890

Basement Unfinished: 1,890 sq. ft.

Front Porch: 393 sq. ft.

Covered Patio: 212 sq. ft.

Total Square Feet: 4,840 sq. ft.

Attached Garage: 2 Car, 455 sq. ft.

Bedrooms: 3

Full Bathrooms: 2

Half Bathrooms: 1

Width: 67'

Depth: 64'4"

Maximum Ridge Height: 28'

Exterior Walls: 2x4

Ceiling Height:

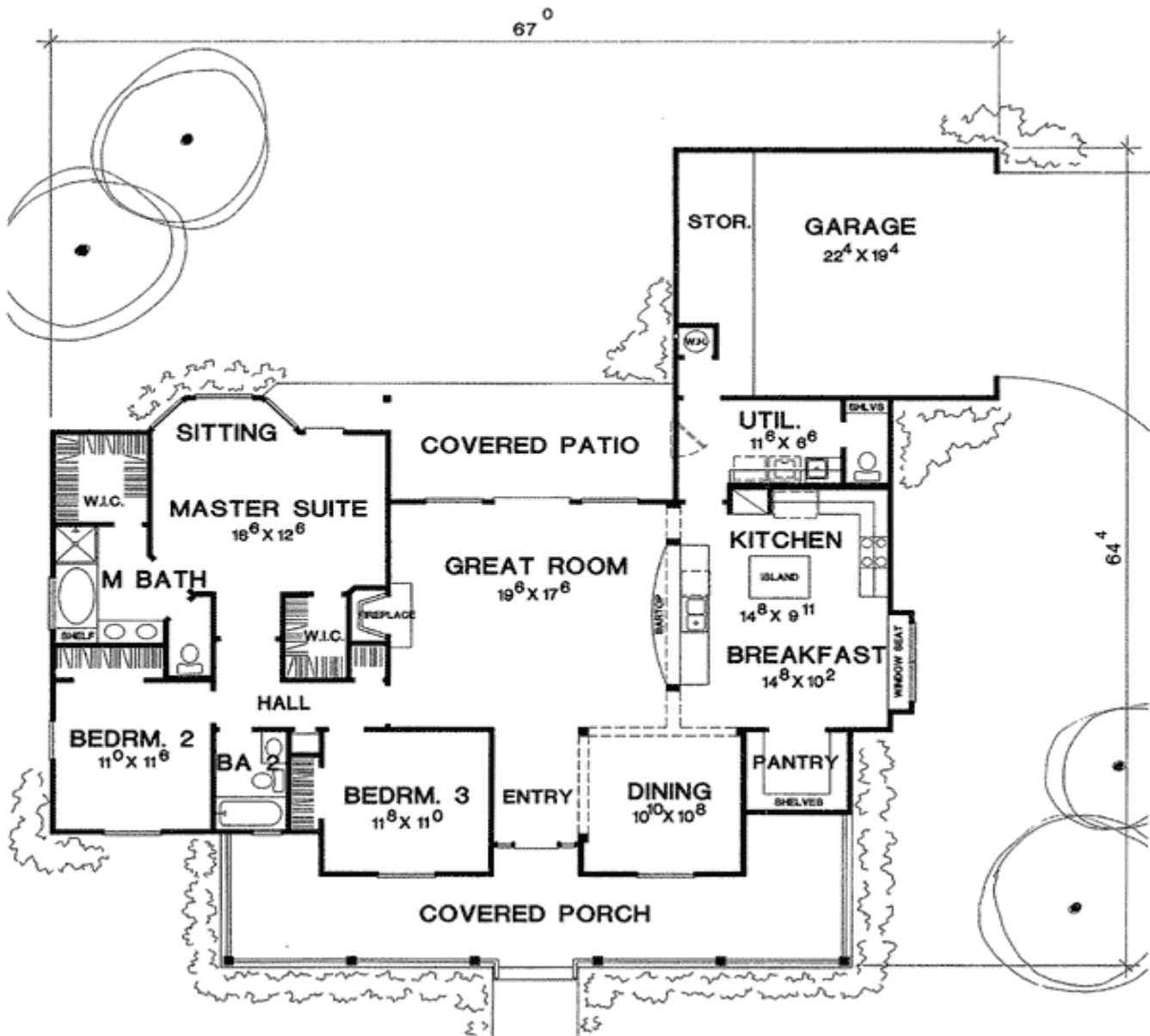
Main Floor: 9'

Standard Foundations: Slab, Basement, Crawl

Special Features: Butler Walk-in Pantry, Corner Lot, 1st Floor Master Suite, CAD Available, Photo Gallery, MBR Sitting Area

One Set	Five Sets	Eight Sets	Reproducible	CAD
\$510	\$565	\$620	\$795	\$1,765

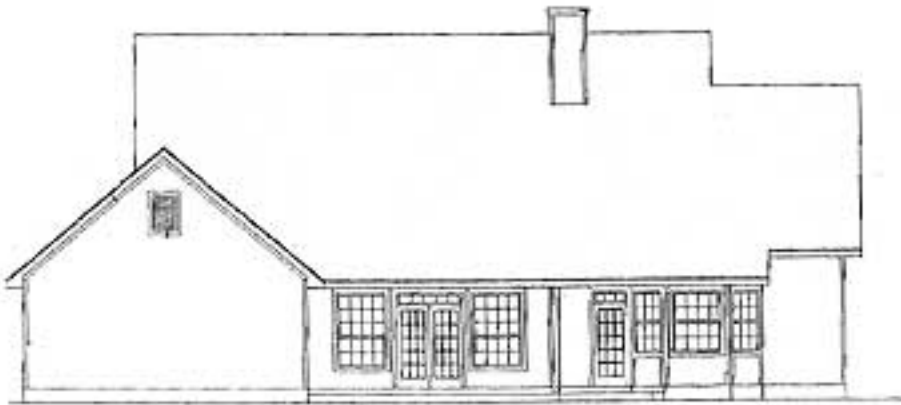
Main Level



Elevation #2



Sides/Rear



Rear elevation



Left elevation



Right elevation