

Architectural Designs ...selling quality house plans for over 30 years.

Plan W3416VL: Livable Family Home



House plans are Copyright © 2009 by our architects and designers.

- Combining elements of country homes and farmhouses, this design offers covered porches in both front and back and a side-loading garage topped by a vaulted bonus area.
- Just off the foyer lies a study that could also be used as a home office or playroom. On the other side of the foyer, a half-wall delineates the dining room.
- An angled eating bar separates the great room and the kitchen. Isolated for privacy, the master suite features a marvelous bath with dual vanities and walk-in closets, garden tub and separate shower.
- Two family bedrooms share a bath.
- Ceilings: 9' standard. 12' in kitchen, dining room, great room, foyer and study.
- Foundation options: slab or crawl space. Specify when ordering.

Style: Country, Farmhouse

Total Living Area: 2089

Main Flr.: 2089

Bonus: 497 sq. ft.

Front Porch: 180 sq. ft.

Rear Porch: 424 sq. ft.

Total Square Feet: 3,731 sq. ft.

Attached Garage: 2 Car, 541 sq. ft.

Bedrooms: 3

Full Bathrooms: 2

Half Bathrooms: 1

Width: 79'

Depth: 52'

Maximum Ridge Height: 24'

Exterior Walls: 2x4

Ceiling Height:

Standard Foundations: Slab, Crawl

Special Features: 1st Floor Master Suite, Bonus Room

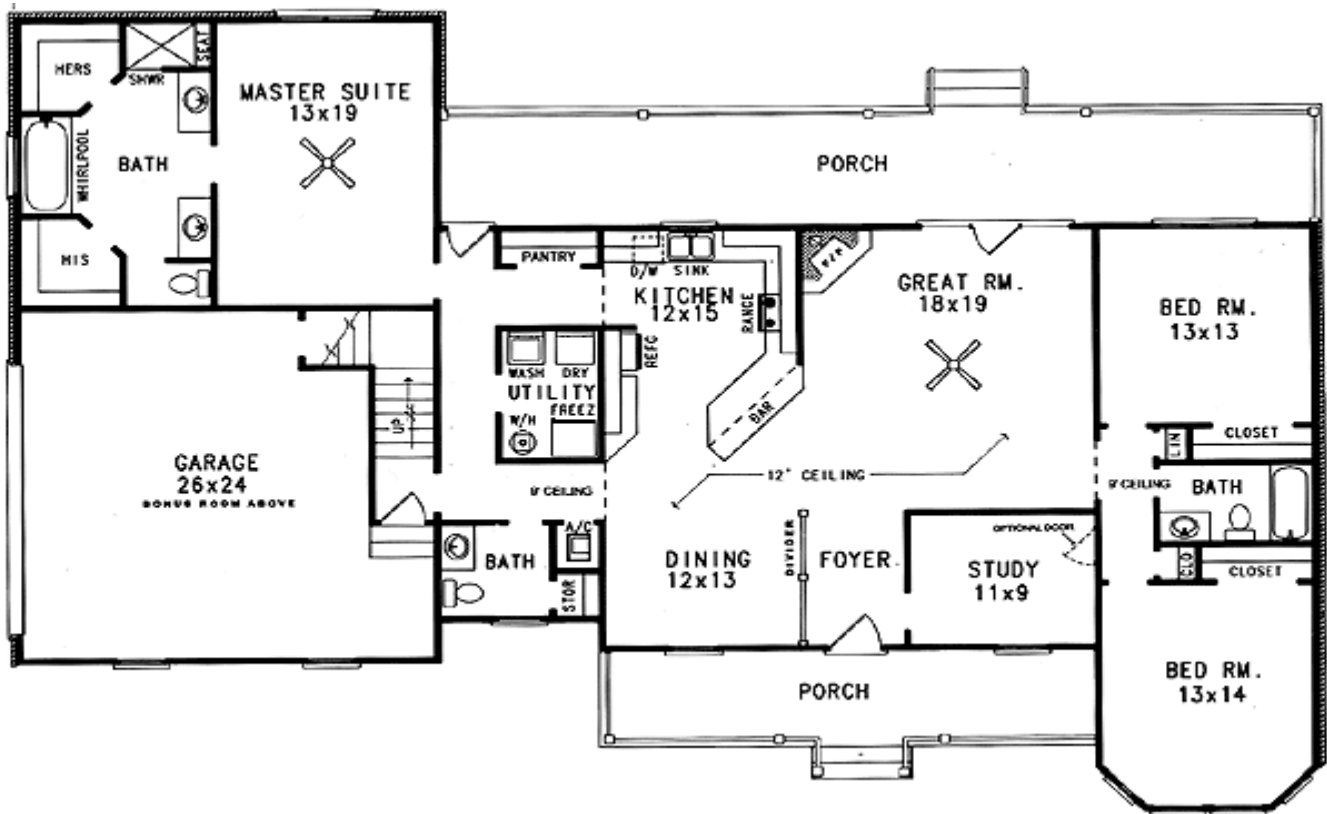
One Set
\$525

Five Sets
\$645

Eight Sets
\$725

Reproducible
\$745

Main Level



Bonus

