

# Architectural Designs ...selling quality house plans for over 30 years.

Plan W6924AM: For a Front-Sloping Lot



House plans are Copyright © 2009 by our architects and designers.

- Locating the garage on the lower level of this home plan maximizes the use of a front-sloping lot. The exterior design details include cedar shingle siding, stone foundation accents and a planter box at the offset entry.
- From the foyer, two steps lead up to a two-story great room embellished with a built-in media center and a two-sided fireplace shared with the den. An atrium door opens to the deck.
- Crowned by a tray ceiling, the formal dining room is next to the kitchen with its angled island. A breakfast nook is set in a bay.
- A loft area on the second level connects the vaulted master suite and two family bedrooms, which share a bath. Note the luxurious appointments in the master bath.
- Related Plans: For an alternate exterior, see house plan 69035AM.
- For other hillside home plans, don't miss 69029AM, 69180AM and 6884AM.

Style: Contemporary, Northwest

Total Living Area: 2262

Main Flr.: 1302

2nd Flr.: 960

Deck: 96 sq. ft.

Total Square Feet: 3,600 sq. ft.

Attached Garage: 2 Car, 1,242 sq. ft.

Bedrooms: 3

Full Bathrooms: 2

Half Bathrooms: 1

Width: 40'

Depth: 40'

Maximum Ridge Height: 35'

Exterior Walls: 2x6

Ceiling Height:

    Main Floor: 9'

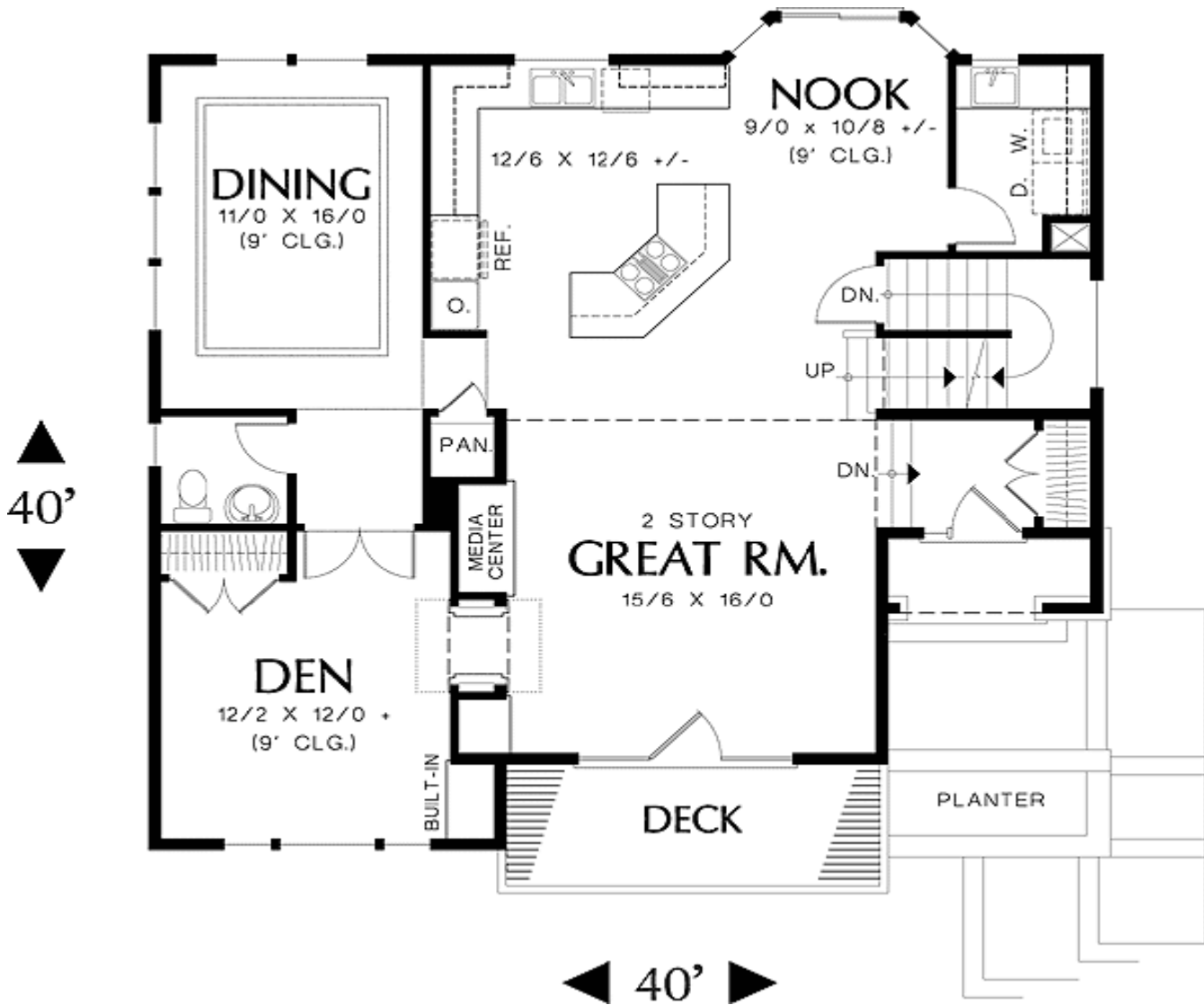
    2nd Floor: 9'

Standard Foundations: Daylight

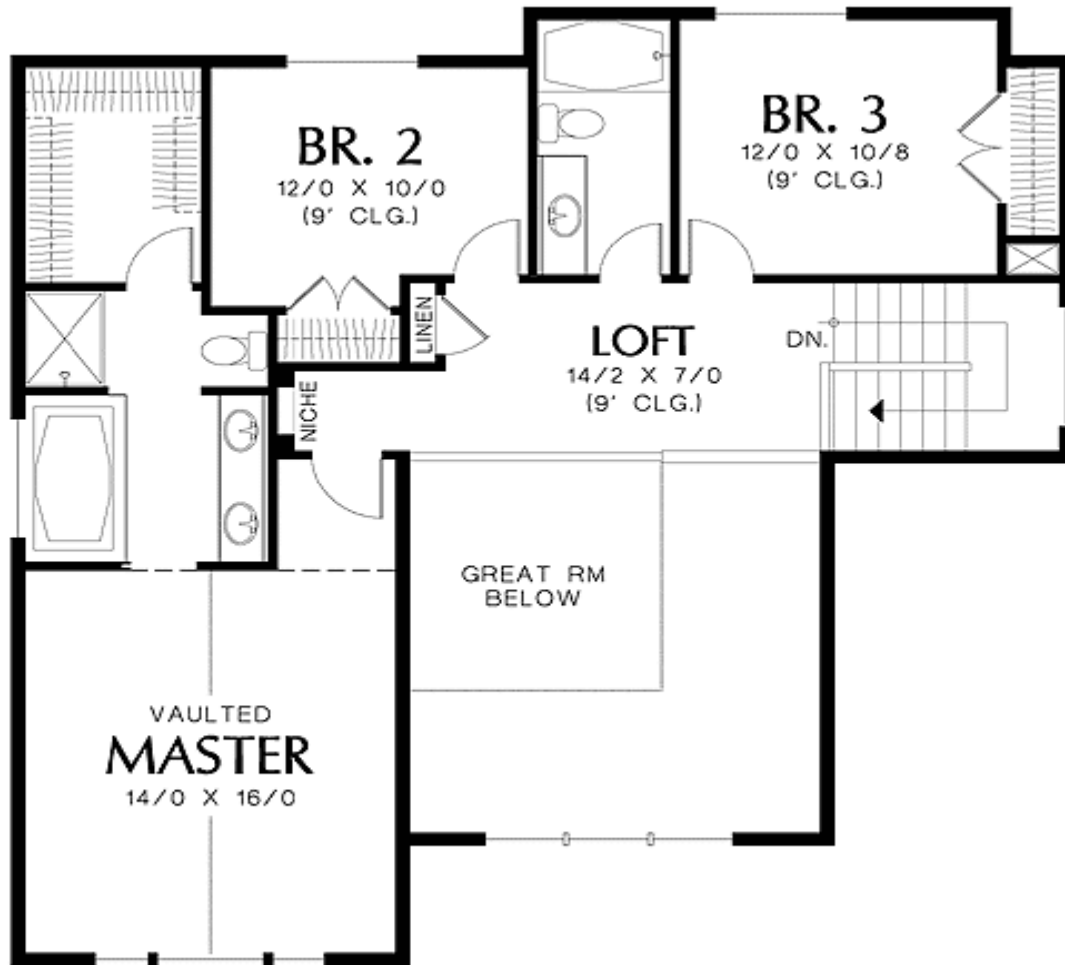
Special Features: Drive Under Garage, Sloping Lot, Narrow Lot, CAD Available, PDF, Photo Gallery

One Set	Five Sets	Eight Sets	Reproducible	PDF File	CAD
\$575	\$625	\$700	\$925	\$925	\$1,575

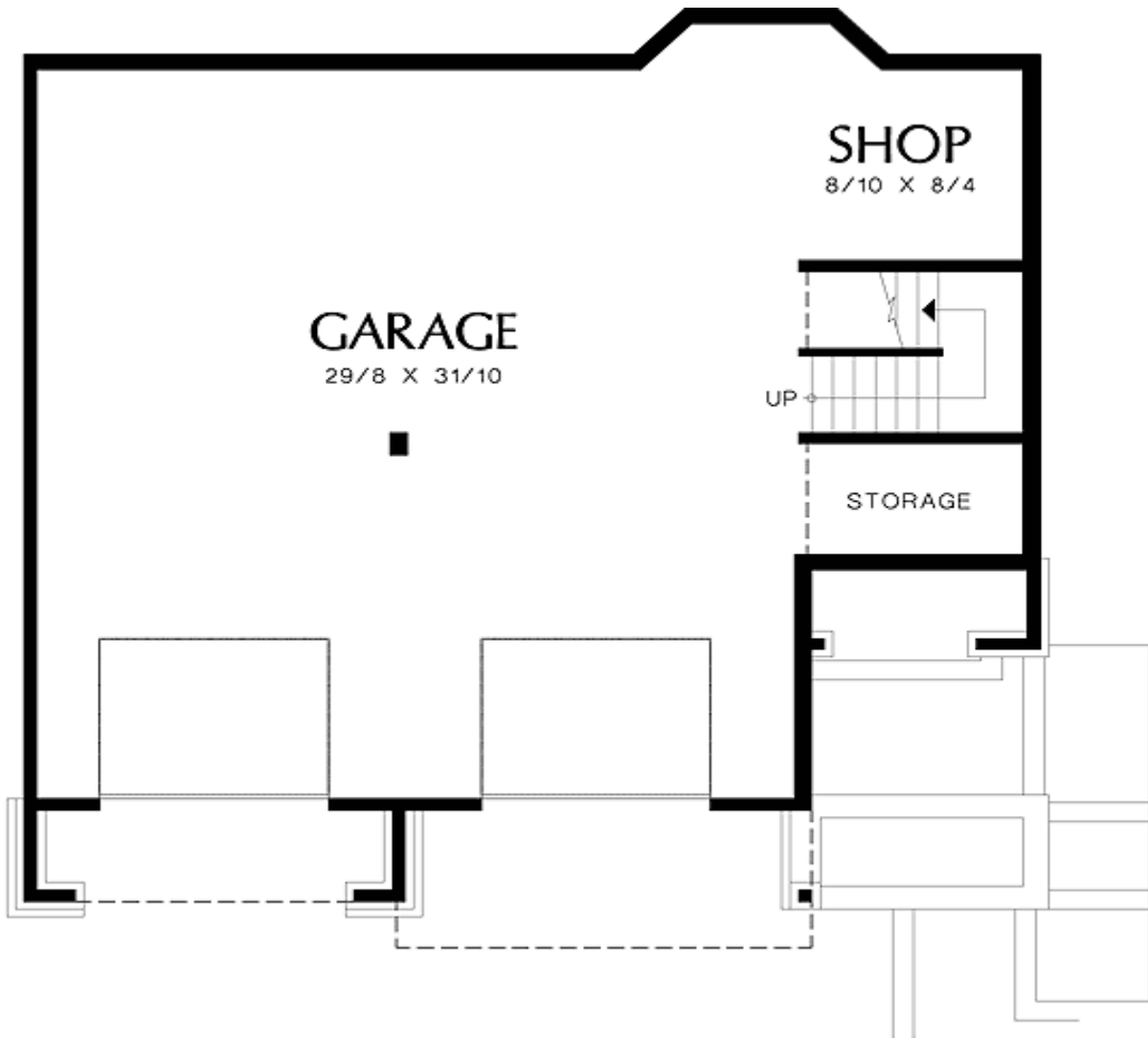
Main Level



2nd Level



Lower Level



# Architectural Designs ...selling quality house plans for over 30 years.

Photo



Photo #2



Rear View

