

Architectural Designs ...selling quality house plans for over 30 years.

Plan W19181GT: European Home Plan



House plans are Copyright © 2009 by our architects and designers.

- A highlight of this home is the island kitchen, where a boxed out corner window bathes the sink and surrounding countertop in warm sunlight. The kitchen flows into a breakfast nook with a window seat. The nook opens to a soaring living room warmed by a fireplace; a recessed wet bar is tucked into a corner.
- The master suite features a bayed sitting area and a private bath with a big walk-in closet and a dual-sink vanity.
- Upstairs, a balcony hallway overlooks the living room. Two secondary bedrooms have private access to a shared bath.

Style: European, Traditional

Total Living Area: 2247

Main Flr.: 1512

2nd Flr.: 735

Total Square Feet: 2,247 sq. ft.

Detached Garage: 2 Car, 0 sq. ft.

Bedrooms: 3

Full Bathrooms: 2

Half Bathrooms: 1

Width: 47'2"

Depth: 38'2"

Maximum Ridge Height: 29'

Exterior Walls: 2x4

Ceiling Height:

Main Floor: 9'

Other: 10' MBR; Cathedral Living Room

Standard Foundations: Slab

Special Features: 1st Floor Master Suite, Photo Gallery, Narrow Lot, PDF

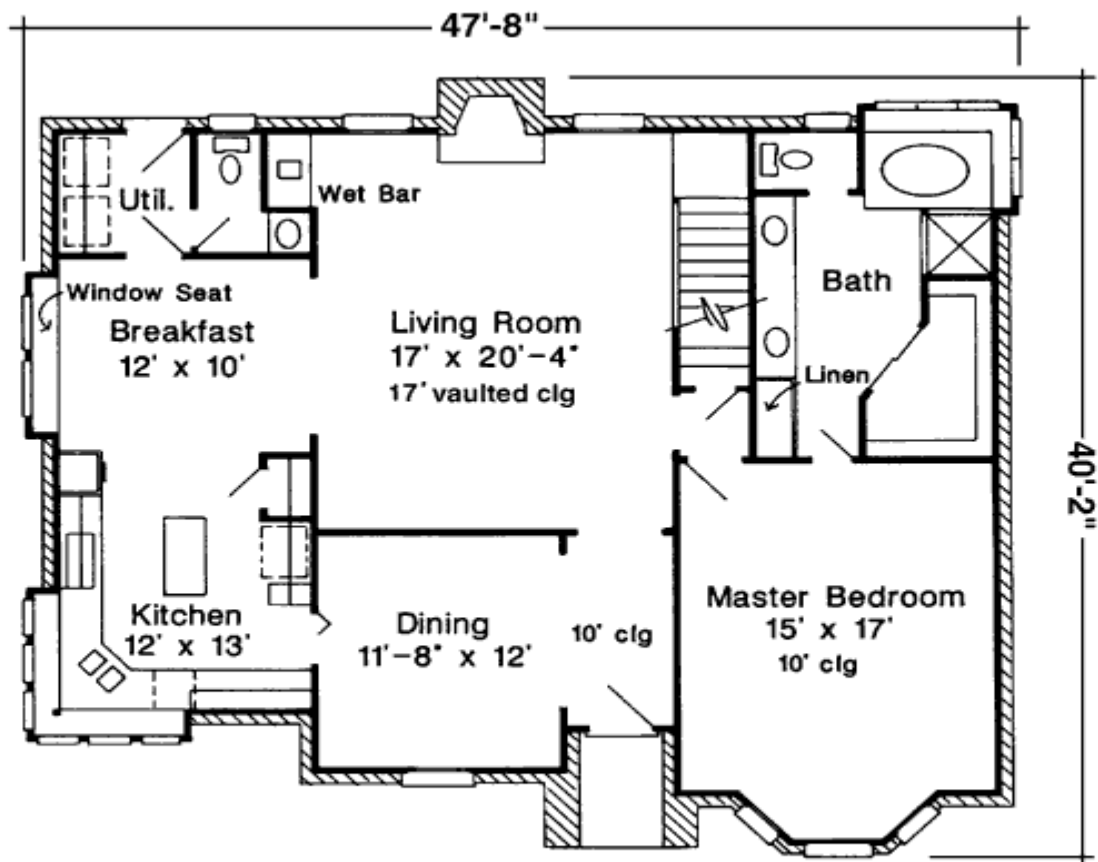
Five Sets
\$589

Eight Sets
\$639

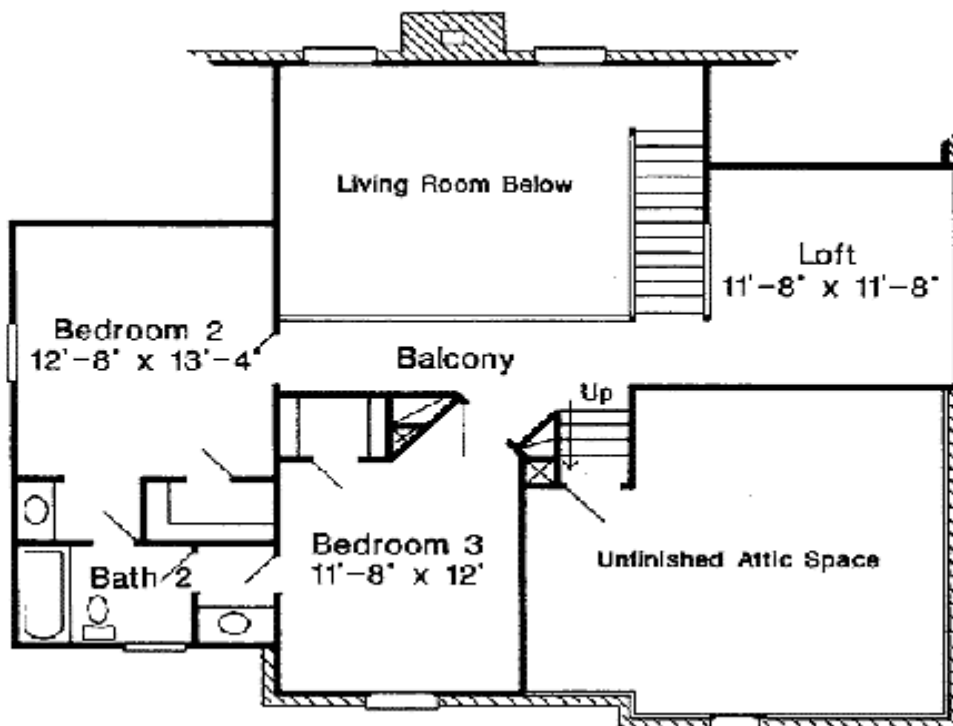
Reproducible
\$799

PDF File
\$799

Main Level



2nd Level



Architectural Designs ...selling quality house plans for over 30 years.

Photo

