

# Architectural Designs ...selling quality house plans for over 30 years.

Plan W72566DA: Beautiful Split-level Home Plan



House plans are Copyright © 2009 by our architects and designers.

- This is a richly-windowed split-level home plan designed to take in views from every room.
- The well-appointed kitchen with a bayed nook on one side is open to the living room with corner fireplace and the dining room, both with access to the rear deck.
- The owner's suite offers a sitting area with deck access, a walk-in closet, dual vanities, a large soaking tub and separate shower.
- Two more bedrooms share a bath and a third can easily be made into a home office.

Style: Split Level

Total Living Area: 2968

Main Flr.: 2430

Basement Unfinished: 538 sq. ft.

Total Square Feet: 3,627 sq. ft.

Attached Garage: 2 Car, 659 sq. ft.

Bedrooms: 4

Full Bathrooms: 2

Width: 56'

Depth: 61'

Maximum Ridge Height: 34'6

Exterior Walls: 2x6

Ceiling Height:

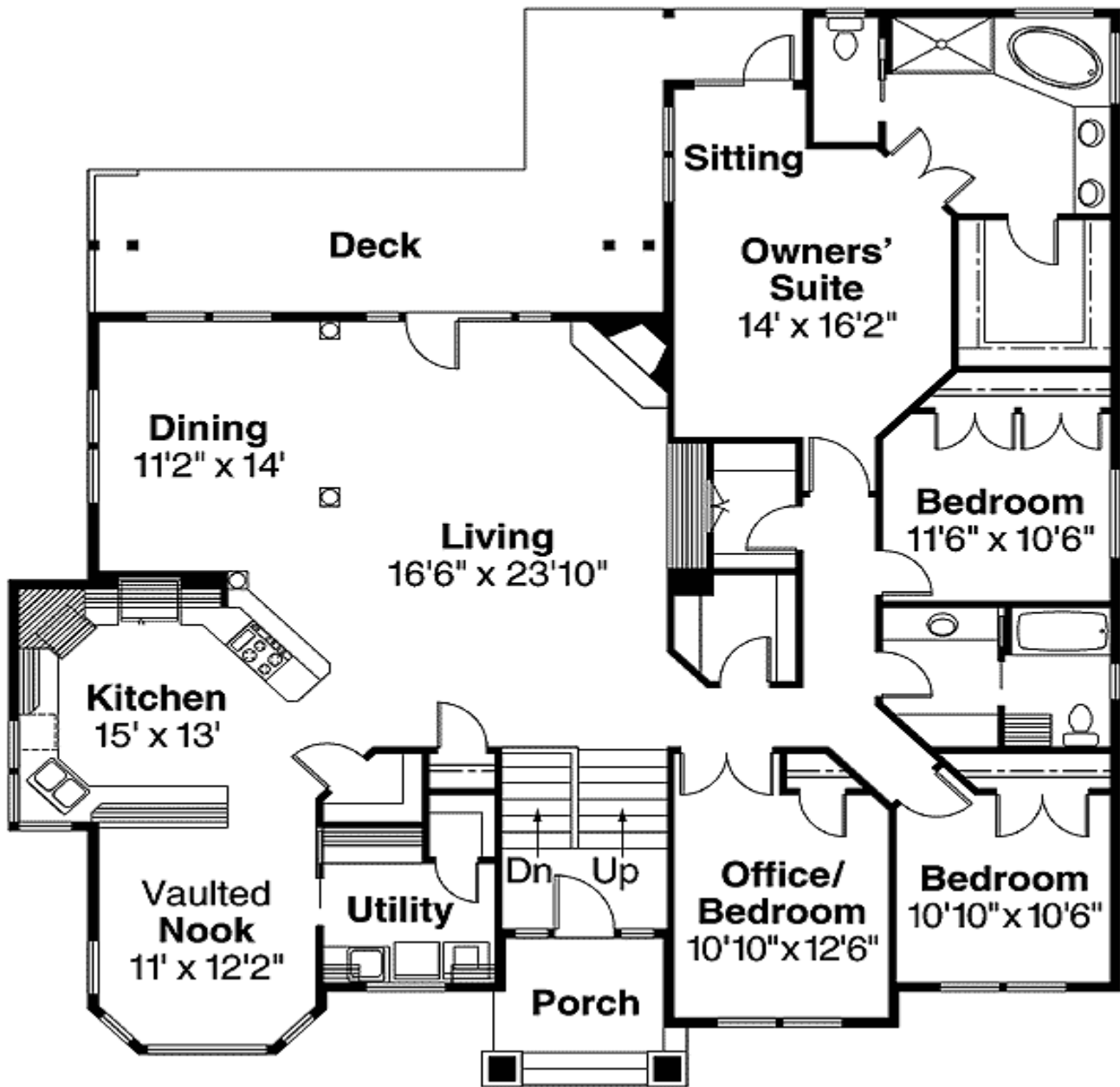
Main Floor: 9'

Standard Foundations: Basement

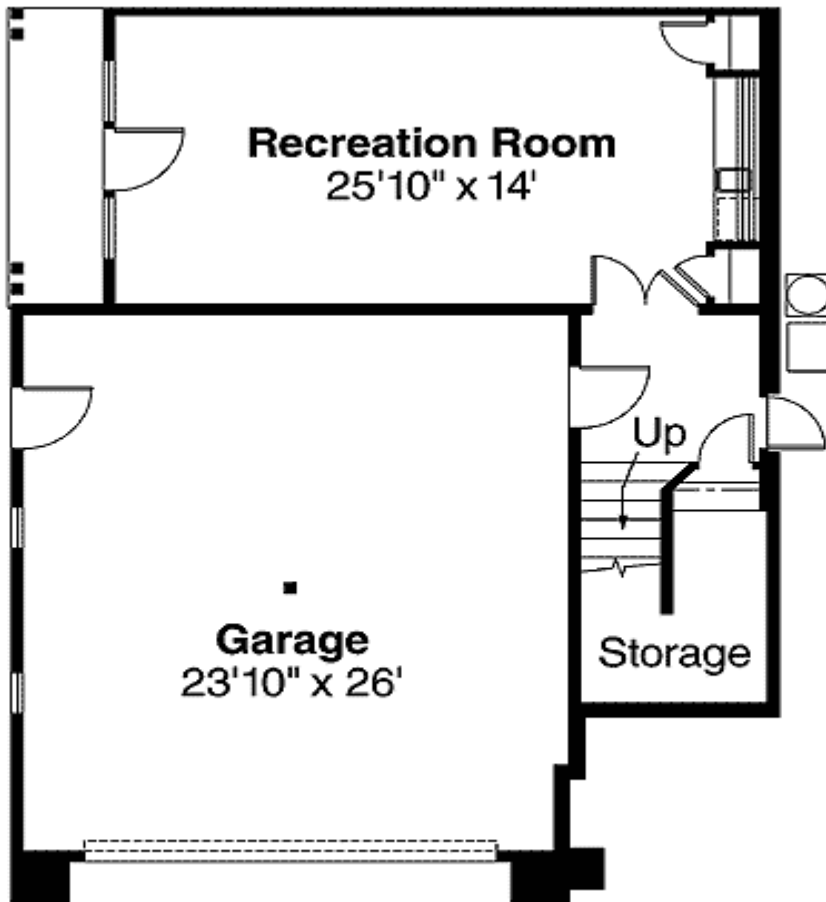
Special Features: PDF, CAD Available, 1st Floor Master Suite

One Set	Five Sets	Eight Sets	Reproducible	PDF File	CAD
\$545	\$675	\$835	\$1,015	\$1,015	\$1,275

## Main Level



Lower Level



Rear View

