

Plan W6905AM: Open Living Area



House plans are Copyright © 2009 by our architects and designers.

- With its 30-foot width, this traditional design easily fits on a narrow lot.
- On the first level, the two-story foyer and the nine-foot-high great room open up the space. Note the fireplace in the great room and the nearby closet and storage space under the staircase.
- An eating island divides the great room from the efficiently laid out kitchen. A bayed dining area with backyard entry completes the living area.
- Off the upstairs hall, a special touch is the laundry room-linen closet combination. Two bedrooms access a shared bath. Twin sinks are also found in the master bath, which leads to a walk-in closet.
- Foundation: crawl space.

Style: Northwest, Traditional

Total Living Area: 1464

Main Flr.: 655

2nd Flr.: 809

Attached Garage: 2 Car, 400 sq. ft.

Bedrooms: 3

Full Bathrooms: 2

Half Bathrooms: 1

Width: 30'

Depth: 42'

Maximum Ridge Height: 30'

Exterior Walls: 2x6

Ceiling Height:

Main Floor: 9'

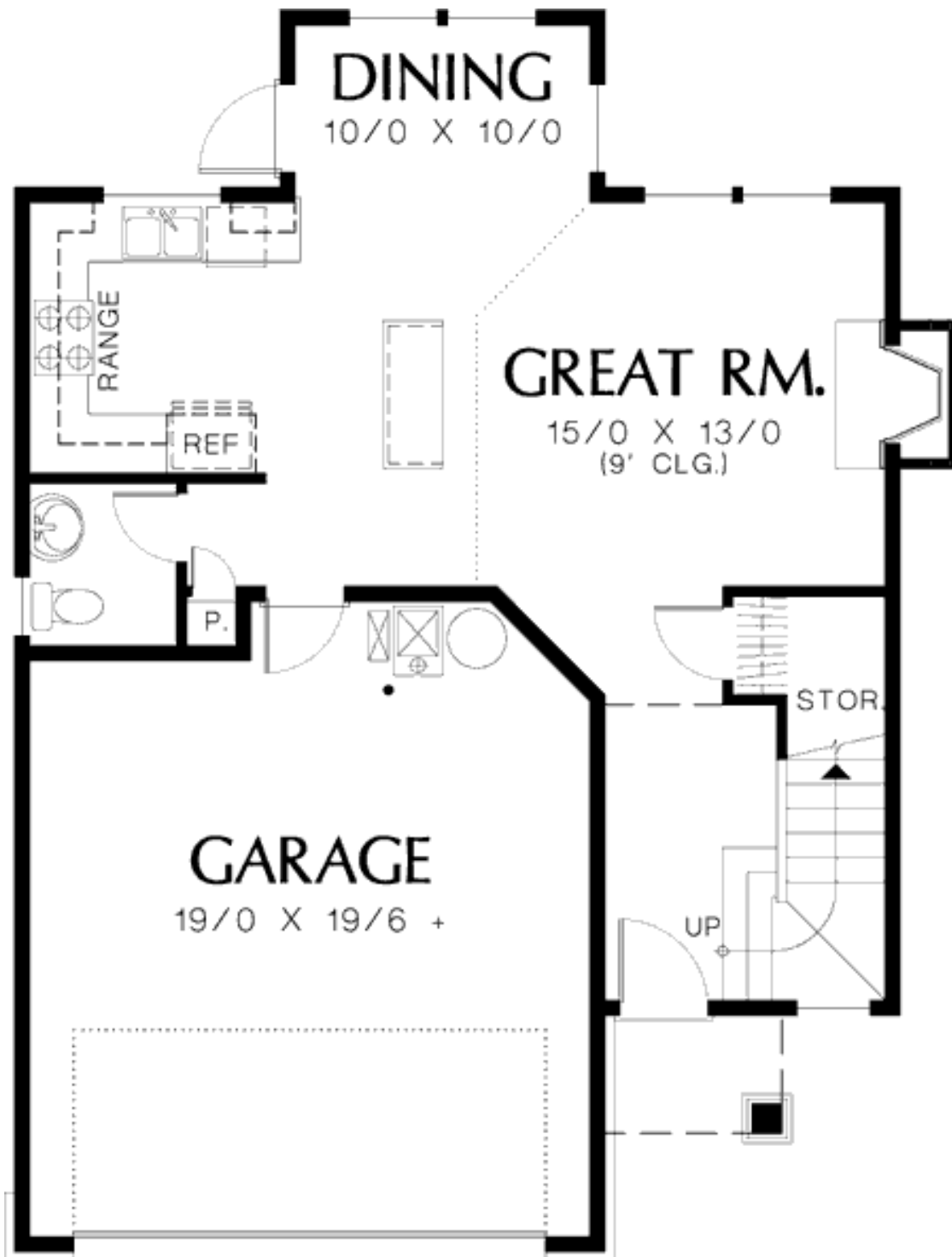
Standard Foundations: Crawl

Alternate Foundations: Slab (\$80), Basement (\$195)

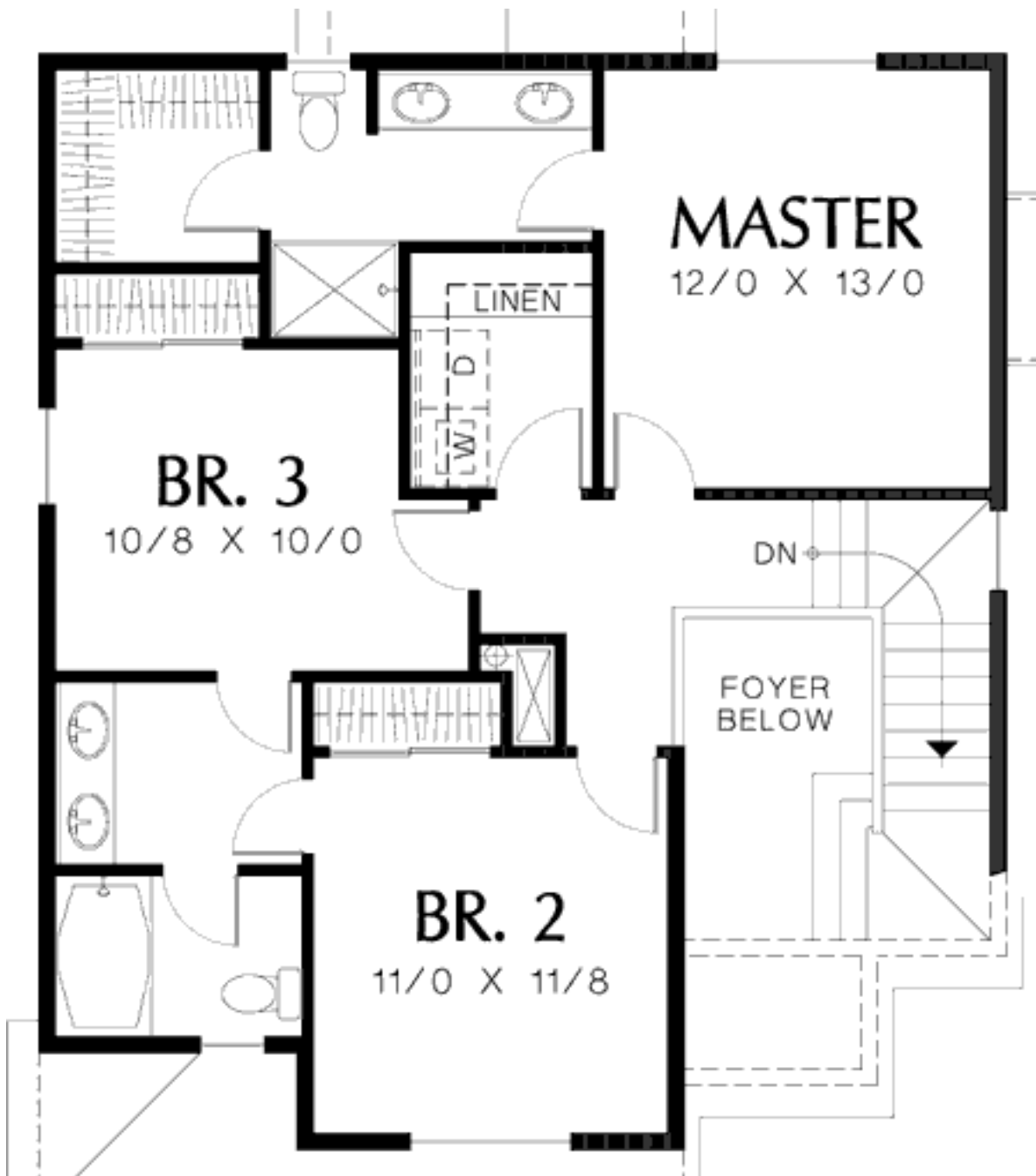
Special Features: CAD Available, PDF, Jack & Jill Bath, Narrow Lot

One Set	Five Sets	Eight Sets	Reproducible	PDF File	CAD
\$475	\$550	\$595	\$800	\$800	\$1,350

Main Level



2nd Level



Rear View

