

Plan W2233SL: Two Car Garage with Loft Storage



House plans are Copyright © 2009 by our architects and designers.

- Are you shopping for a 2-car garage with loft storage? Consider this detached garage plan with loft. Enter via the covered porch. The garage area enjoys a 9' ceiling and two 9'x8' overhead garage doors.
- This floor plan is deep enough for boat and trailer storage.
- The second level features unfinished storage space.

Style: Garage

Total Living Area: 0

Storage: 468 sq. ft.

Total Square Feet: 720 sq. ft.

Detached Garage: 2 Car, 720 sq. ft.

Bedrooms: None

Full Bathrooms:

Width: 28'

Depth: 30'

Maximum Ridge Height: 25'

Exterior Walls: 2x4

Optional Exterior Walls: 2x6 \$75

Ceiling Height:

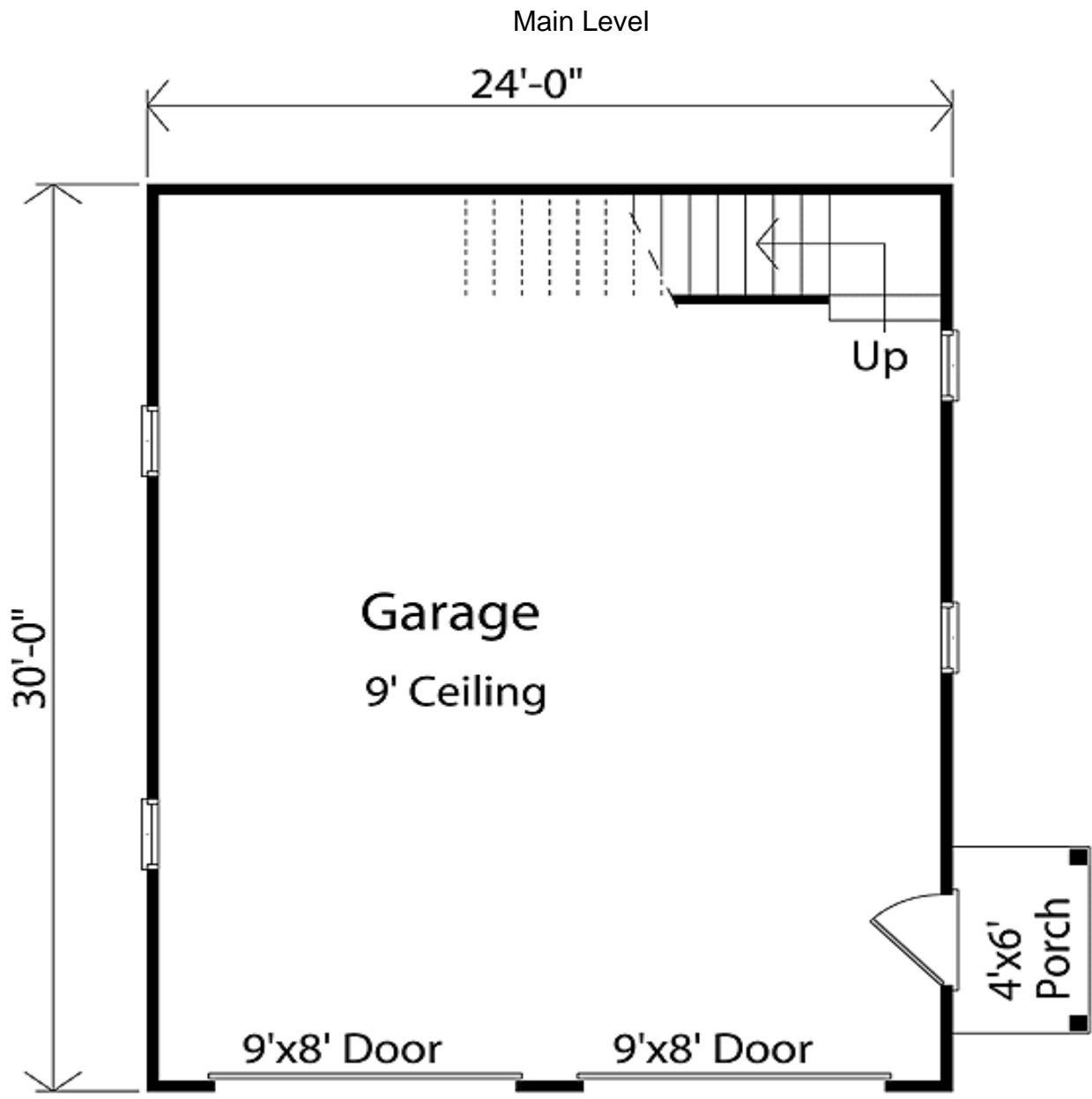
Main Floor: 9'

2nd Floor: 8'

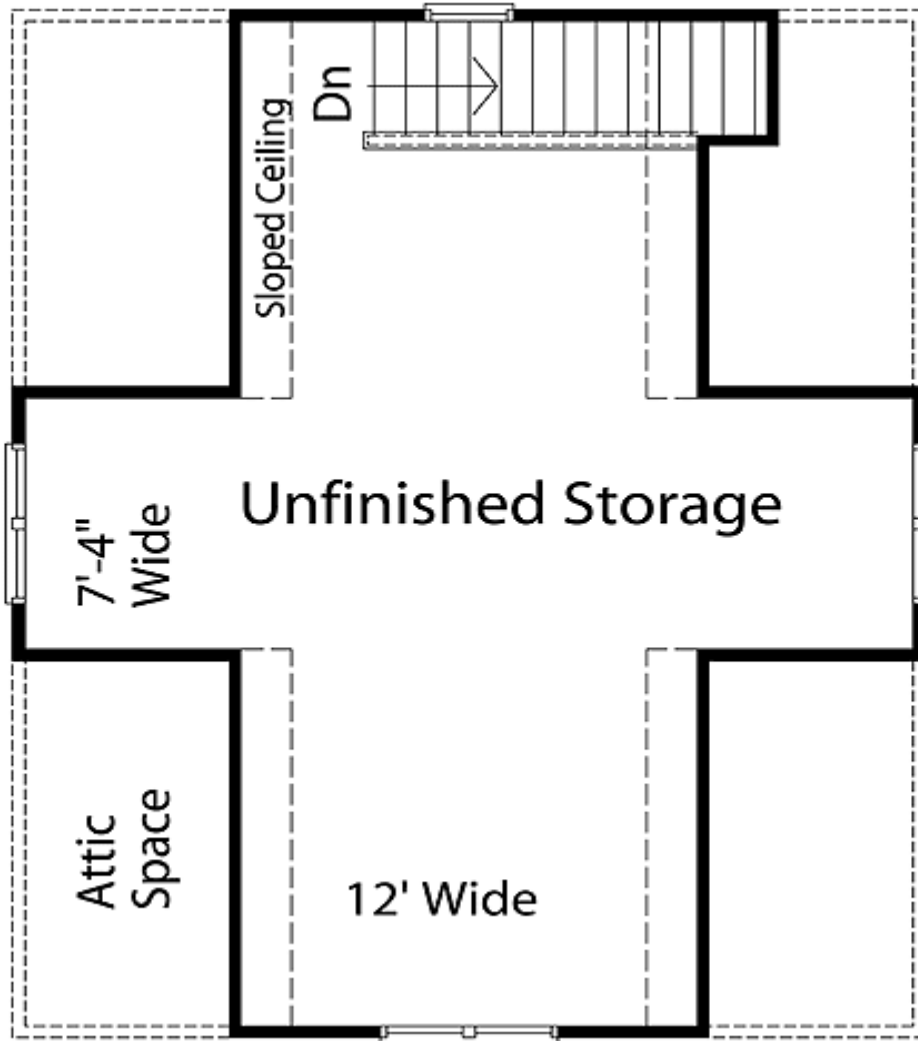
Standard Foundations: Slab

Special Features: CAD Available, PDF, Narrow Lot

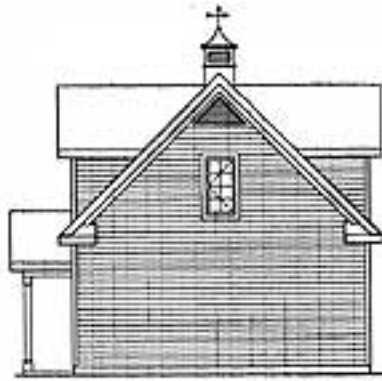
One Set	Five Sets	Eight Sets	Reproducible	PDF File	CAD
\$150	\$240	\$330	\$350	\$350	\$450



2nd Level



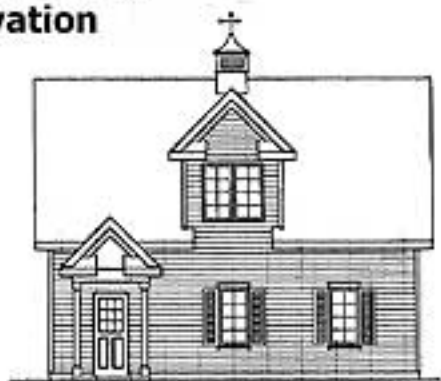
Sides/Rear



Rear elevation



Left elevation



Right elevation