

Plan W5904ND: Outdoor Living Space



House plans are Copyright © 2009 by our architects and designers.

- Reminiscent of Southern Low Country designs, this abode features a covered wrap-around porch, a deck and a covered grilling porch.
- The open living space comprises a living room with a fireplace and a media center, a dining/hearth room with another fireplace and a kitchen with an angled eating bar and a pantry closet.
- The master suite has a spacious walk-in closet and a wonderful bath with a old-fashioned claw-foot tub and a walk-in shower. On the other side of the house, two bedrooms share a bathroom, each with a private sink area.
- Upstairs, bonus space that can be used as a game room opens to attic storage. A full bath is also found on this floor.
- Related Plans: For an alternate master suite arrangement, see house plan 59298ND.
- For a one-story plan, see 59376ND.
- For two-story plans, see 59637ND and 59707ND.

Style: Country, Low Country, Southern, Traditional

Total Living Area: 1921

Main Flr.: 1921

Bonus: 505 sq. ft.

Porch, Combined: 959 sq. ft.

Total Square Feet: 3,890 sq. ft.

Attached Garage: 2 Car, 505 sq. ft.

Bedrooms: 3

Full Bathrooms: 3

Width: 84'

Depth: 55'6"

Maximum Ridge Height: 20'4"

Exterior Walls: 2x4

Ceiling Height:

 Main Floor: 8'

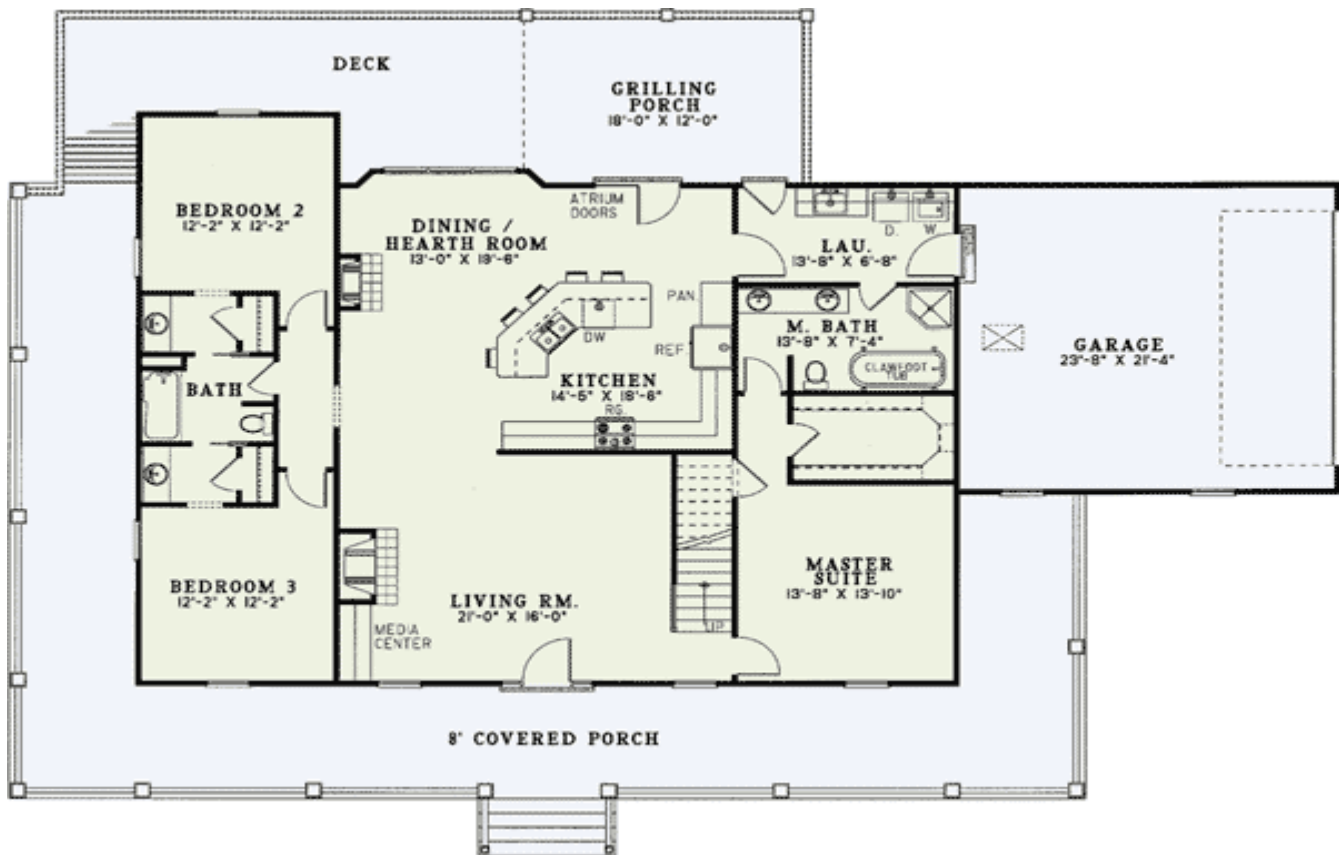
Standard Foundations: Slab, Crawl

Alternate Foundations: Walkout (\$250), Basement (\$250)

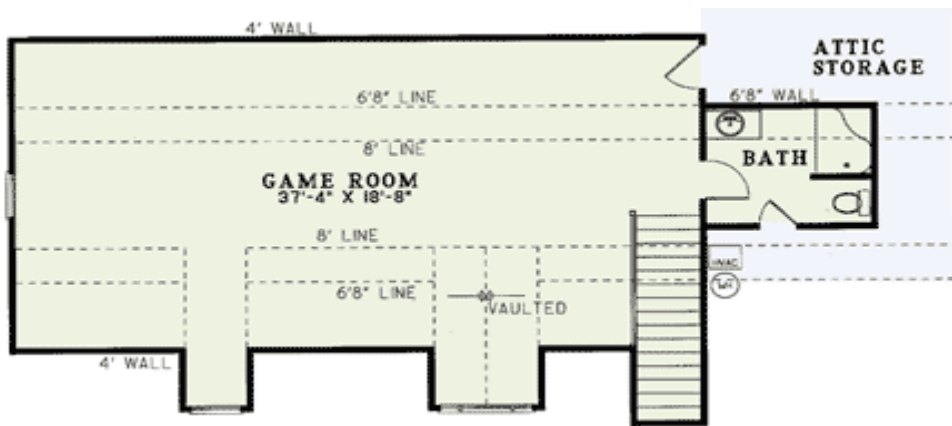
Special Features: PDF, 1st Floor Master Suite, Bonus Room, Sloping Lot, Wrap Around Porch, CAD Available

One Set	Five Sets	Eight Sets	Reproducible	PDF File	CAD
\$605	\$710	\$750	\$970	\$970	\$1,650

Main Level



Bonus



Sides/Rear

