

Plan W69446AM: Stunning Contemporary Home Plan with Photos



House plans are Copyright © 2009 by our architects and designers.

- An economical use of space and a truly singular design make this contemporary three-bedroom home plan the most distinctive property on nearly any block.
- A flat roof, simple lines and a mix of materials draw attention to the exterior.
- Inside, a main master suite features high windows (in the his and her master bath) while a sweepingly narrow living/dining space off the kitchen features ample built-ins (which continue in the foyer-adjacent, front office).
- Upstairs: clerestory windows bring in light above the living room below and two additional spacious, bedrooms are endowed with dual, enclosed balconies.

Style: Contemporary

Total Living Area: 2190

Main Flr.: 1667

2nd Flr.: 523

Total Square Feet: 2,589 sq. ft.

Attached Garage: 2 Car, 399 sq. ft.

Bedrooms: 3

Full Bathrooms: 2

Half Bathrooms: 1

Width: 40'

Depth: 75'

Maximum Ridge Height: 21'

Exterior Walls: 2x6

Ceiling Height:

Main Floor: 9'

Other: 12'6" Living Room

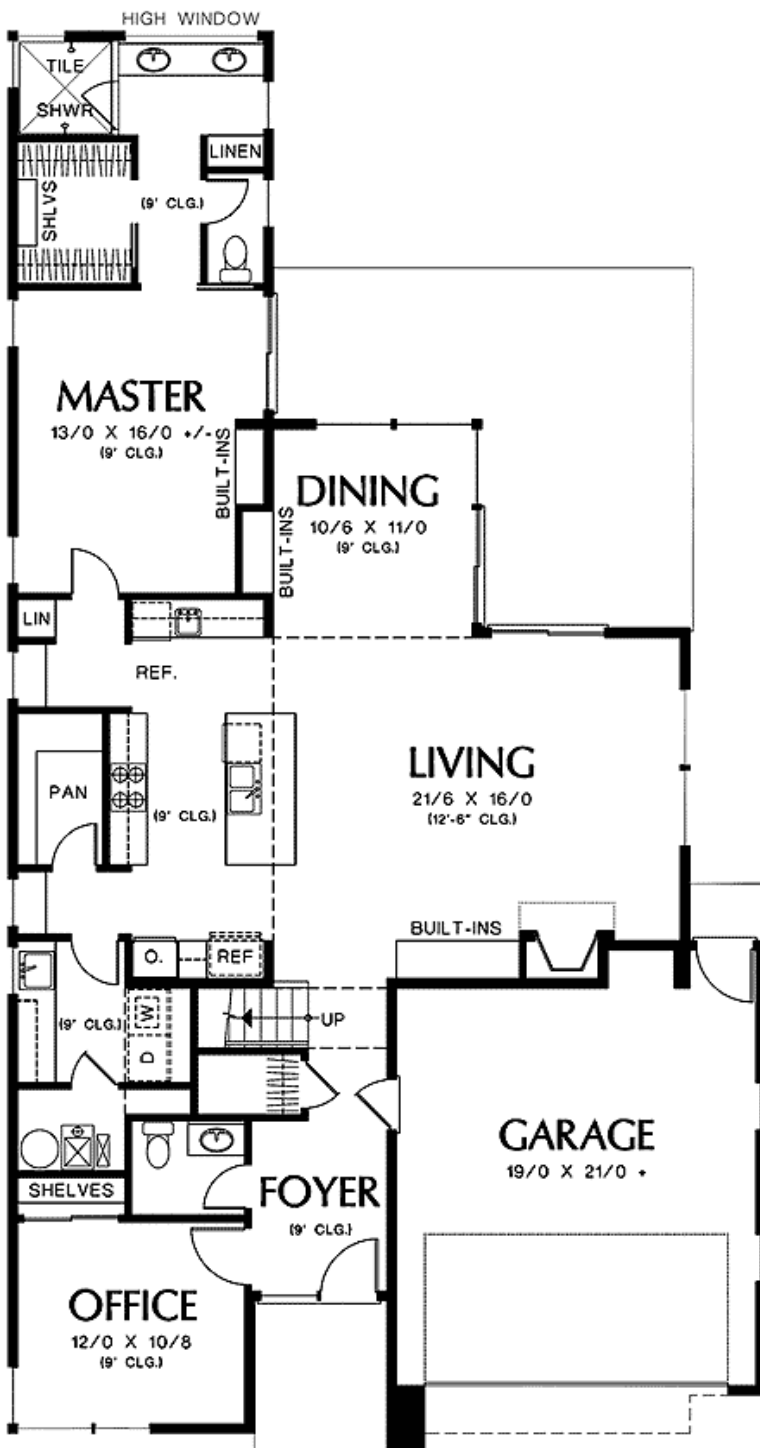
Standard Foundations: Crawl

Alternate Foundations: Slab (\$105), Basement (\$250)

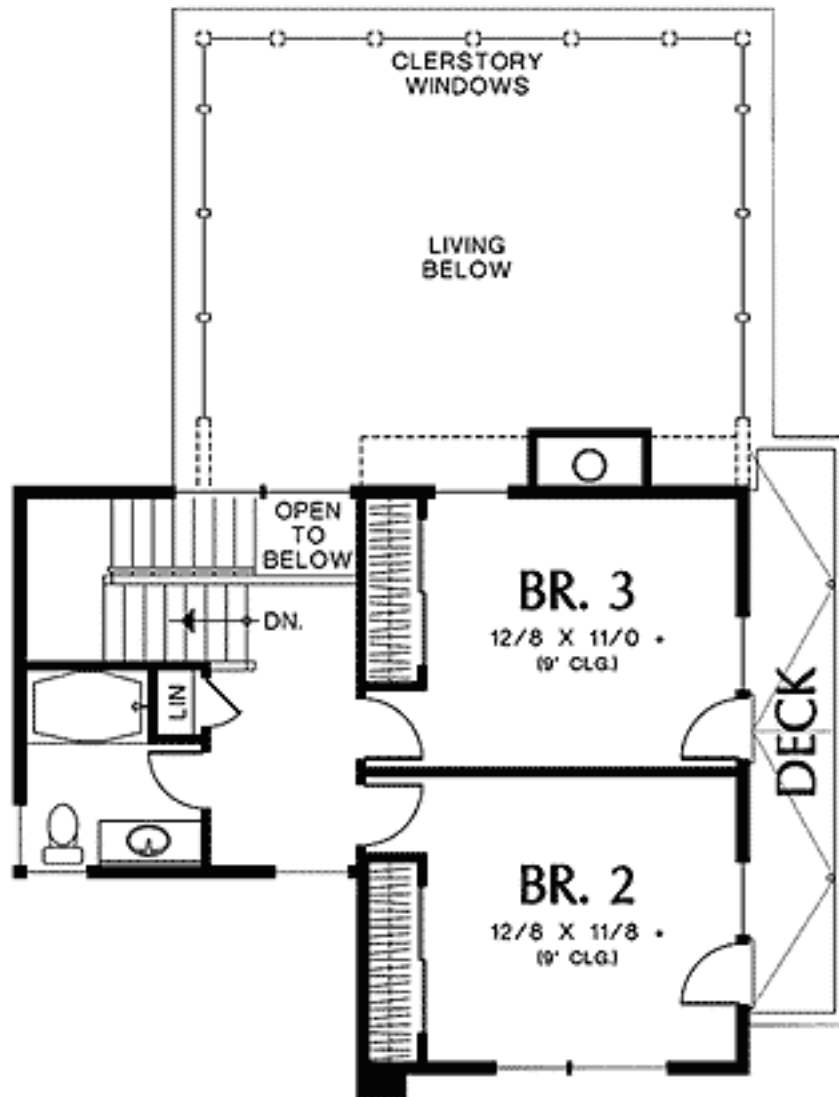
Special Features: Narrow Lot, CAD Available, 1st Floor Master Suite, Den-Office-Library-Study, PDF

One Set	Five Sets	Eight Sets	Reproducible	PDF File	CAD
\$575	\$625	\$700	\$925	\$925	\$1,575

## Main Level



## 2nd Level



Photo



Elevation #2



Rear View



## Interior



## Living Room



## Dining Room



Kitchen



Kitchen Vw2

