

Architectural Designs ...selling quality house plans for over 30 years.

Plan W15028NC



House plans are Copyright © 2009 by our architects and designers.

Style: Cottage, Country, Low Country, Southern, Vacation

Total Living Area: 2423

Main Flr.: 1534

2nd Flr.: 889

Front Porch: 350 sq. ft.

Rear Porch: 170 sq. ft.

Balcony/Veranda: 170 sq. ft.

Covered Patio: 170 sq. ft.

Total Square Feet: 4,817 sq. ft.

Attached Garage: 2 Car, 1,534 sq. ft.

Bedrooms: 3

Full Bathrooms: 2

Width: 35'

Depth: 63'4"

Maximum Ridge Height: 37'5

Exterior Walls: 2x4

Ceiling Height:

Main Floor: 9'

2nd Floor: 8'

Other: 8'-9" Tray MBR; 8' Lower Level

Standard Foundations: Piling, Raise Island, Slab

Special Features: CAD Available, PDF, Elevator, Den-Office-Library-Study, Drive Under Garage, Narrow Lot

Five Sets
\$825

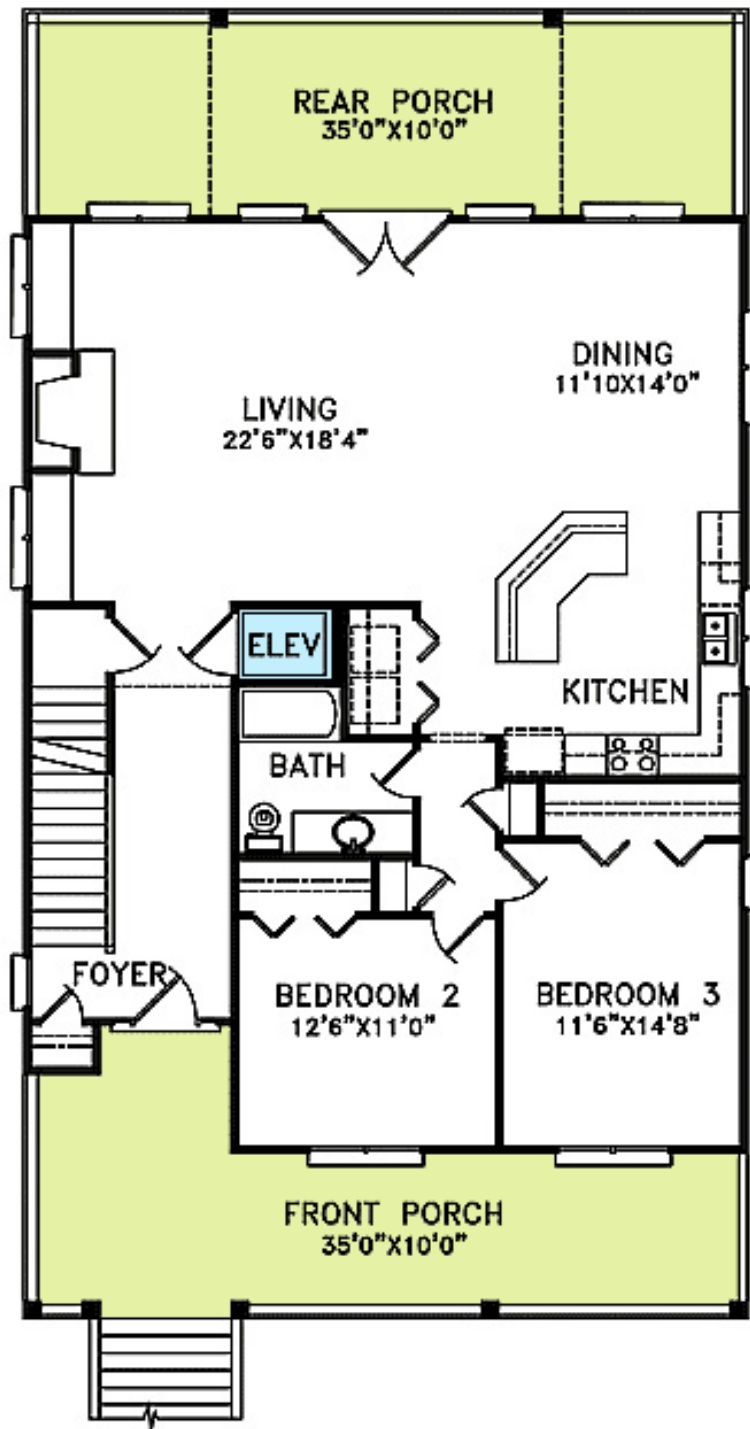
Eight Sets
\$950

Reproducible
\$1,350

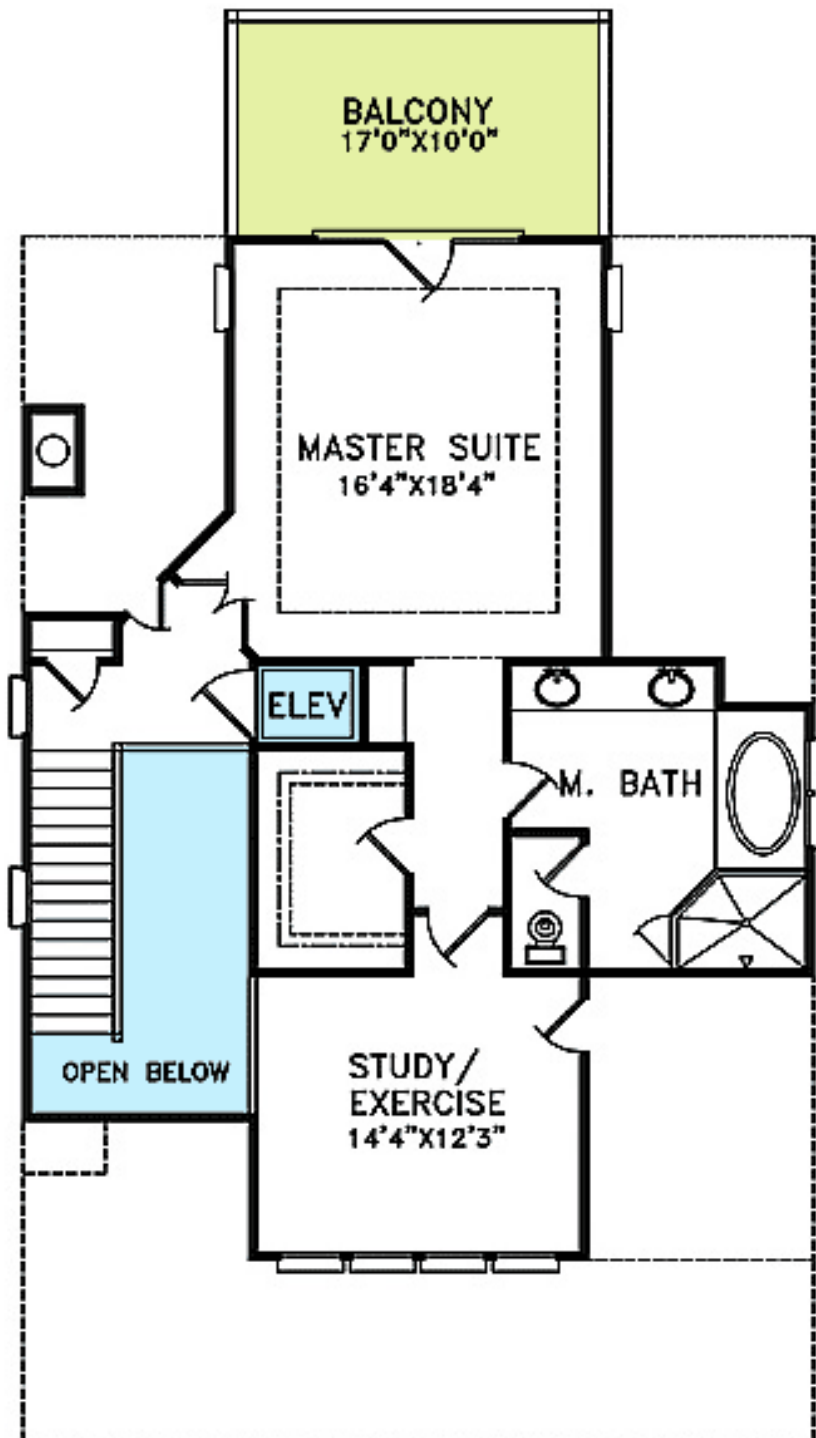
PDF File
\$1,295

CAD
\$1,850

Main Level



2nd Level



Lower Level

