

Architectural Designs ...selling quality house plans for over 30 years.

Plan W5930ND: French Traditional



House plans are Copyright © 2009 by our architects and designers.

- The brick arched entry and front courtyard design give a formal introduction to this gracious home, but an open floor plan and expansive ceilings suit it to family living.
- The 14' high foyer opens to a central gallery and the magnificent great room with fireplace and media center. The large kitchen features an island, desk and breakfast room.
- The master suite has a sitting area, luxurious bath and two large walk-in closets.
- Entertain family and friends in the inviting sun room with a wet bar.
- The upper floor can be a game room, office or guest suite with its private bath.
- Ceilings: 10' standard, unless noted.
- Related Plan: Gain a fourth bedroom with house plan 5906ND.

Style: Traditional

Total Living Area: 3568

Main Flr.: 3051

2nd Flr.: 517

Total Square Feet: 4,131 sq. ft.

Attached Garage: 3 Car, 563 sq. ft.

Bedrooms: 3

Full Bathrooms: 3

Half Bathrooms: 2

Width: 70'

Depth: 81'

Maximum Ridge Height: 27'4"

Exterior Walls: 2x4

Ceiling Height:

Main Floor: 10'

2nd Floor: 10'

Other: 14' Foyer and Dining Room; 12' BR#3"

Standard Foundations: Slab, Crawl

Alternate Foundations: Walkout (\$250), Basement (\$250)

Special Features: CAD Available, Photo Gallery, PDF

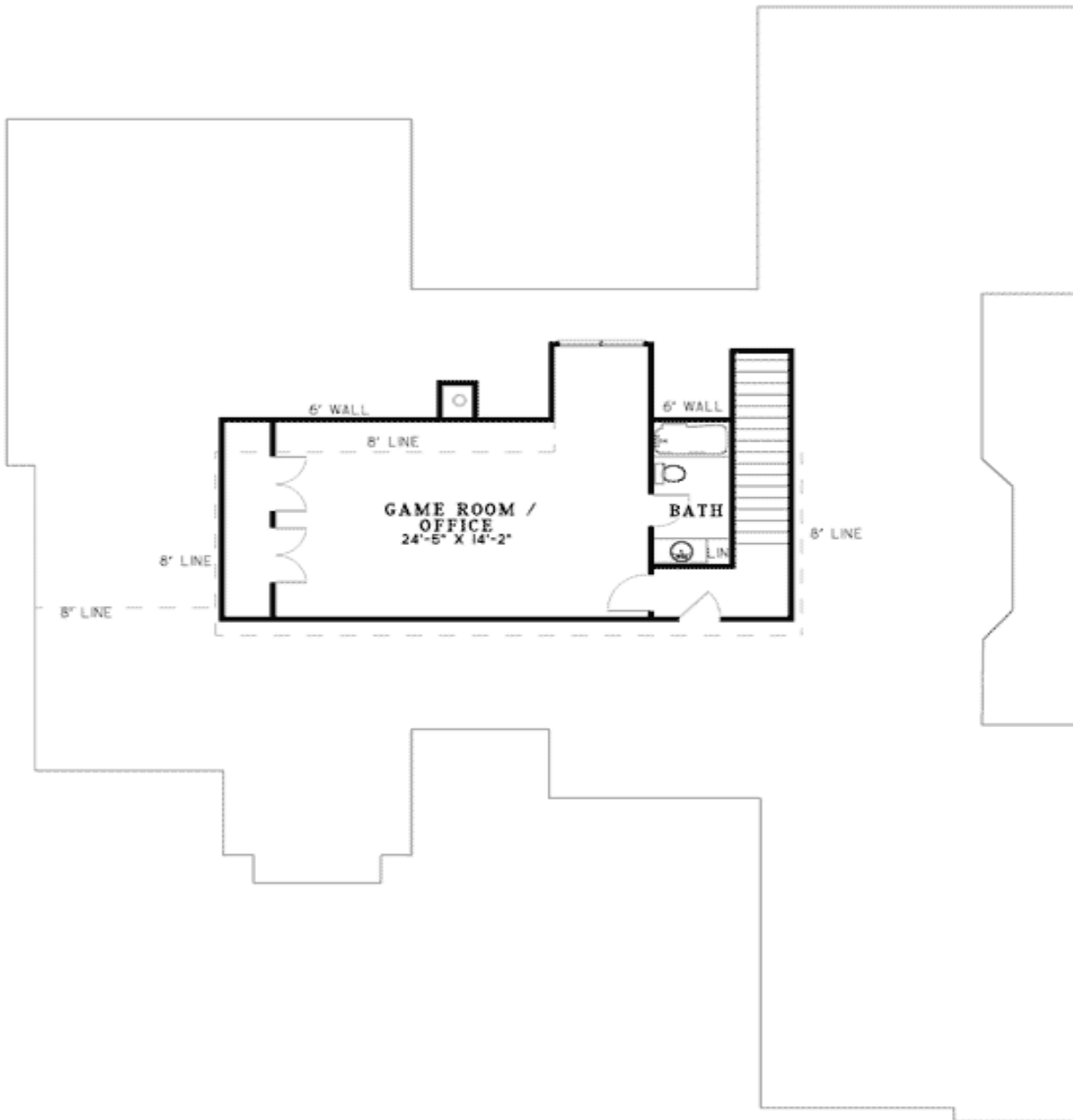
One Set	Five Sets	Eight Sets	Reproducible	PDF File	CAD
\$665	\$810	\$860	\$1,150	\$1,150	\$1,950

Main Level

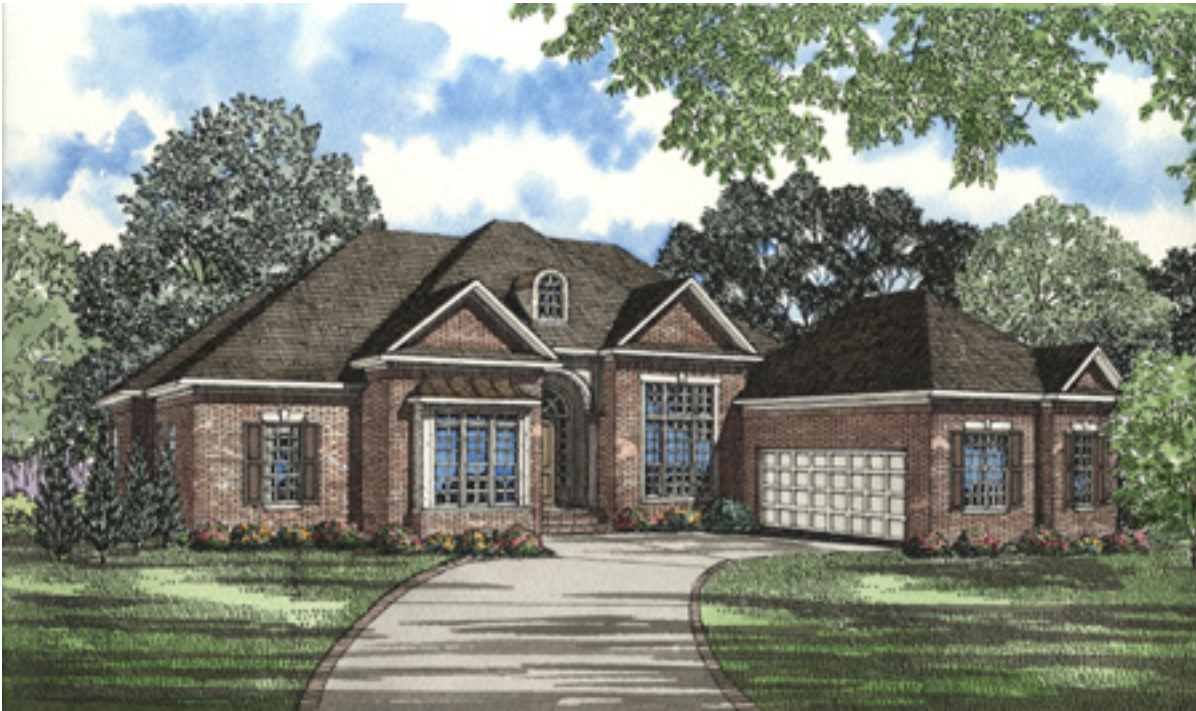
70'-0"



2nd Level



Elevation #2



Sides/Rear



REAR ELEVATION



LEFT ELEVATION



RIGHT ELEVATION