

Architectural Designs ...selling quality house plans for over 30 years.

Plan W2147DR: Marvelous Wrap-Around Porch



House plans are Copyright © 2009 by our architects and designers.

- A covered porch topped by a deck wraps around three sides of this attractive house plan. The porch opens to the foyer, family room and flex room, making for easy entertaining.
- The flex room could serve as a home office, den or fourth bedroom.
- In the open living area, the kitchen with its bayed eating nook is handy to the living-dining combination.
- Upstairs, a huge bayed bathroom adds luxury to the master suite. A hall bath serves the family bedrooms, and a sitting area is found near the stairway. Bonus space over the garage completes this level.
- Ceilings: 9' lower level; 8' upper level.
- Related Plans: Need this house plan in reverse? See 21575DR.
- Need less space? See house plans 2118DR (garage on right) and 21558DR (garage on left).
- Need more space? See house plan 21123DR (3-car garage, stone exterior, 2,992 s.f.).
- Get an elevator with house plan 21885DR.

Style: Canadian, Country, Farmhouse, Metric, Traditional

Total Living Area: 2687

Main Flr.: 1297

2nd Flr.: 1390

Basement Unfinished: 1,297 sq. ft.

Bonus: 229 sq. ft.

Front Porch: 683 sq. ft.

Balcony/Veranda: 169 sq. ft.

Total Square Feet: 5,537 sq. ft.

Attached Garage: 2 Car, 472 sq. ft.

Bedrooms: 3

Full Bathrooms: 2

Half Bathrooms: 1

Width: 6'

Depth: 44'

Maximum Ridge Height: 33'8"

Exterior Walls: 2x6

Ceiling Height:

 Main Floor: 9'

 2nd Floor: 8'

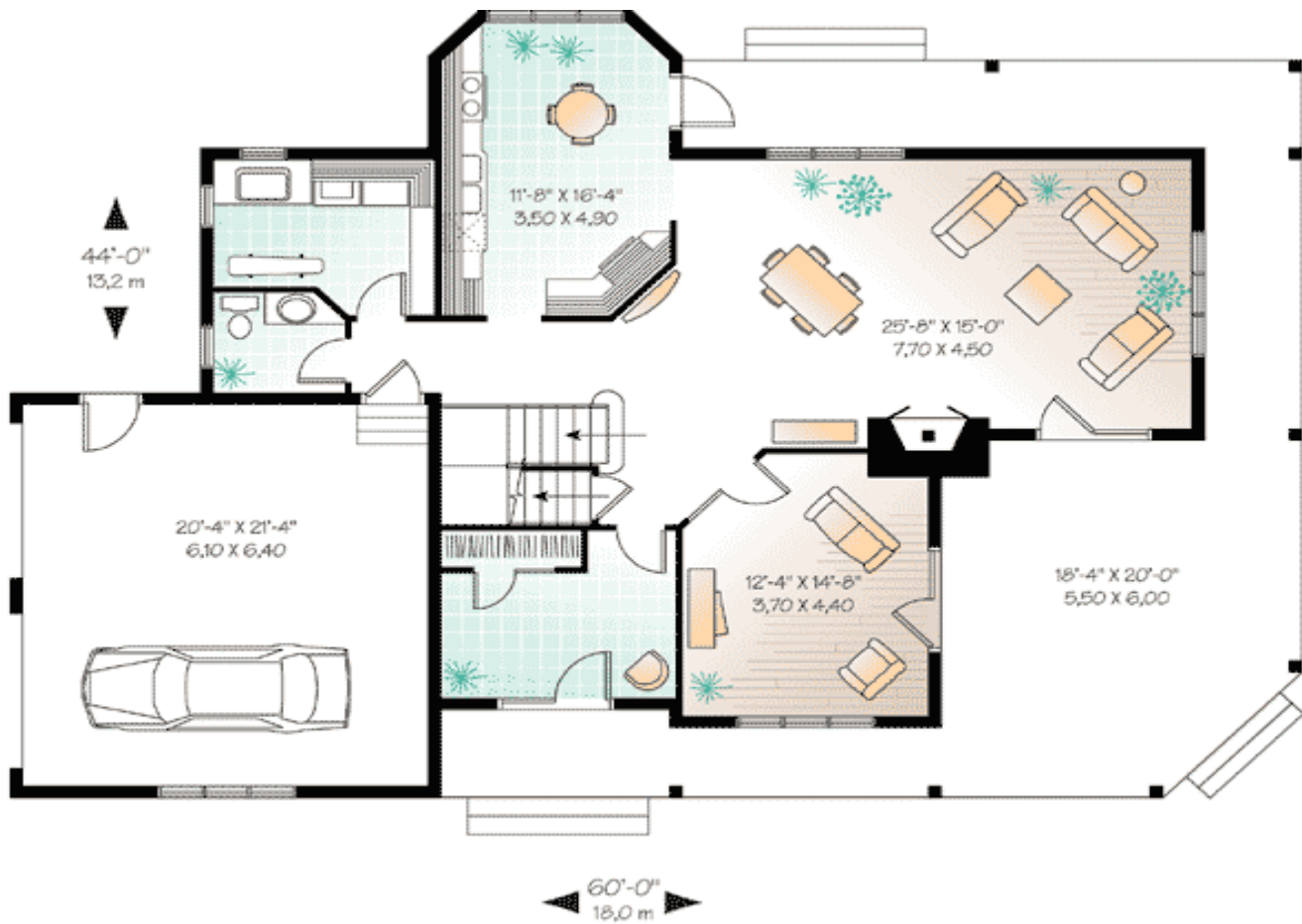
Standard Foundations: Basement

Alternate Foundations: Slab (\$295), Crawl (\$295)

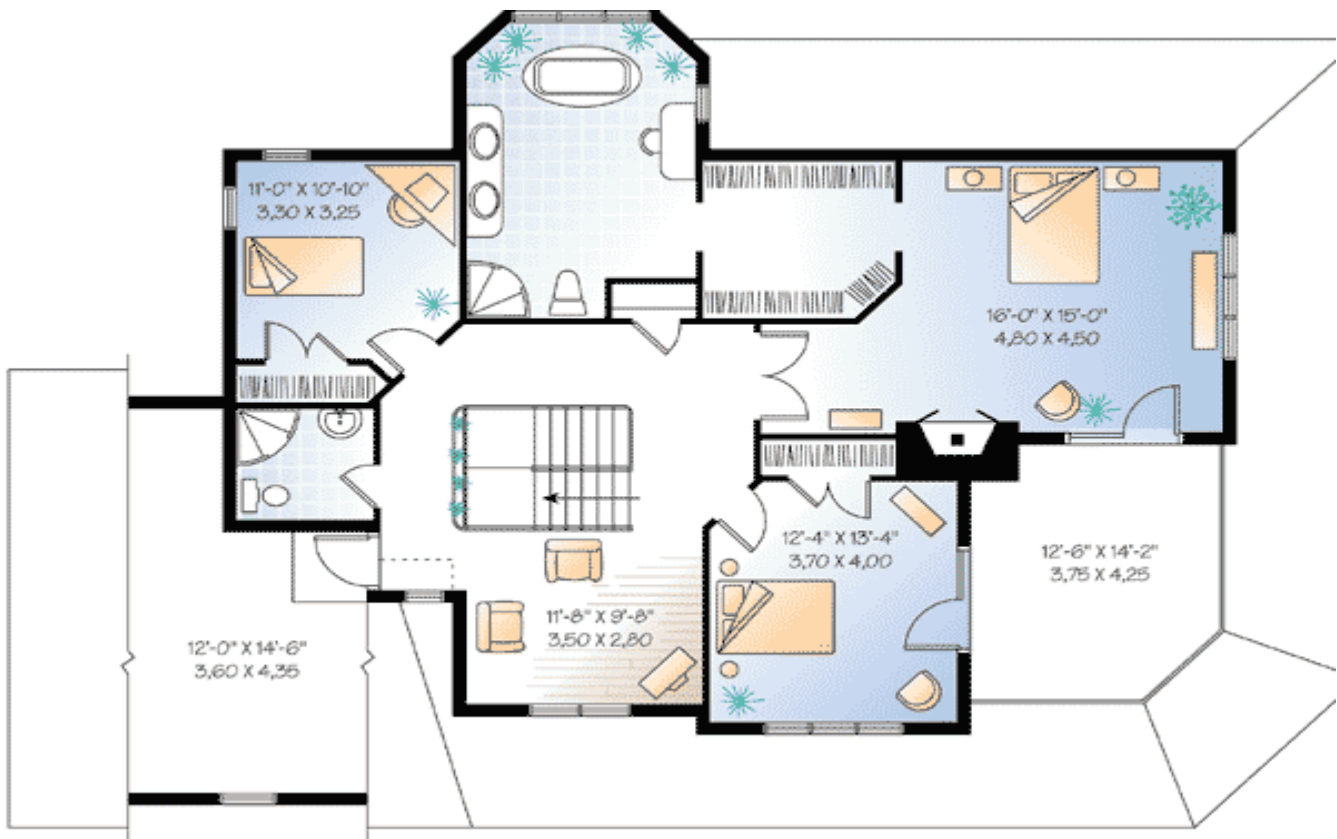
Special Features: Bonus Room, PDF, CAD Available, Corner Lot, Den-Office-Library-Study, Wrap Around Porch

One Set	Five Sets	Eight Sets	Reproducible	PDF File	CAD
\$749	\$789	\$819	\$999	\$999	\$1,710

Main Level



2nd Level



Rear View



Interior

