

Architectural Designs ...selling quality house plans for over 30 years.

Plan W14001DT: Wide-Open Lakefront Home Plan



House plans are Copyright © 2009 by our architects and designers.

- Designed specifically for multiple families, this lakefront home plan has a wide-open floor.
- Vaulted ceilings along with an open floor plan allow for a spacious feeling.
- The large kitchen has space for two refrigerators, a pantry, microwave, and a large island with a raised eating bar.
- The prow front provides a panoramic view, while the deck is excellent for conversation and relaxation.
- While the upstairs, including two bedrooms is perfect for adults, kids rule the daylight basement. The optional spacious family room gives them room to run, while an optional bedroom and bunkroom provide extra sleeping arrangements.
- Vaulted ceilings in living area.

Style: Beach, Contemporary, Mountain, Vacation

Total Living Area: 1104

Main Flr.: 1104

Basement Unfinished: 1,094 sq. ft.

Total Square Feet: 2,198 sq. ft.

Bedrooms: 2

Full Bathrooms: 1

Width: 30'

Depth: 44'

Maximum Ridge Height: 16'3

Exterior Walls: 2x6

Ceiling Height:

Main Floor: 8'

Other: 8' - 11'3" Vaulted Livng, Dining & Kitchen

Standard Foundations: Daylight

Alternate Foundations: Slab (\$100), Crawl (\$100)

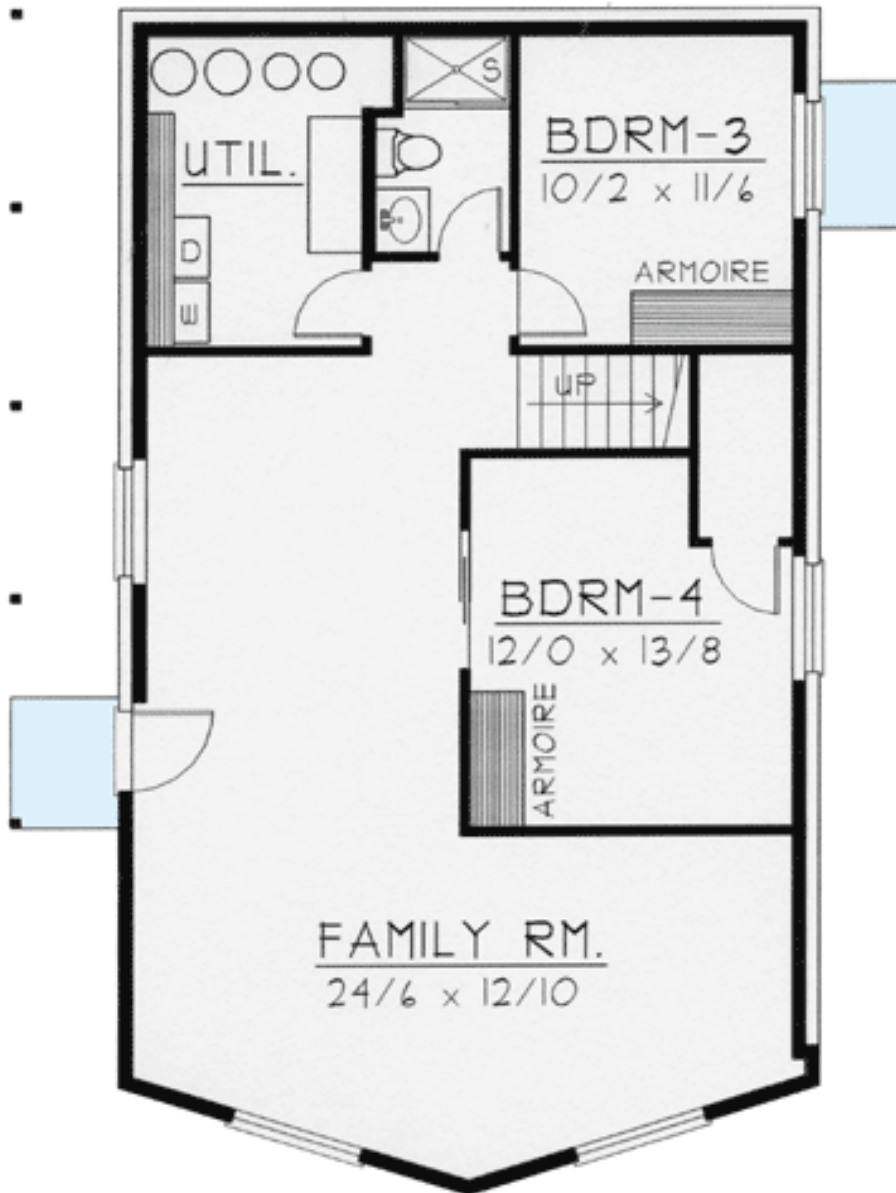
Special Features: CAD Available, Sloping Lot, 1st Floor Master Suite, Narrow Lot

One Set	Five Sets	Eight Sets	Reproducible	CAD
\$460	\$540	\$610	\$860	\$1,080

Main Level



Lower Level



Rear View



REAR ELEVATION