

Plan W20041GA: 3-Car Carriage House Plan



House plans are Copyright © 2009 by our architects and designers.

- This carriage house plan is a 3-car garage design with a 750 sq. ft. studio above.
- With siding exterior reminiscent of a country barn, this plan would be perfect temporary quarters during construction of your permanent home (a brick version is also available). It would also be ideal for an in-law apartment, nanny quarters, college student apartment, etc.
- This design features an eat-in kitchen, a spacious family room, a bathroom and a bedroom with a roomy closet.
- The laundry appliances are tucked beneath the stairs on the garage level with an optional laundry chute on the living level.
- Related Plan: Gain 2' width in the kitchen and bedroom with carriage house plan 20042GA.

Style: Carriage, Garage

Total Living Area: 750

2nd Flr.: 750

Total Square Feet: 1,608 sq. ft.

Detached Garage: 2 Car, 858 sq. ft.

Bedrooms: 1

Full Bathrooms: 1

Width: 38'

Depth: 24'

Maximum Ridge Height: 24'8"

Exterior Walls: 2x4

Ceiling Height:

Main Floor: 8'

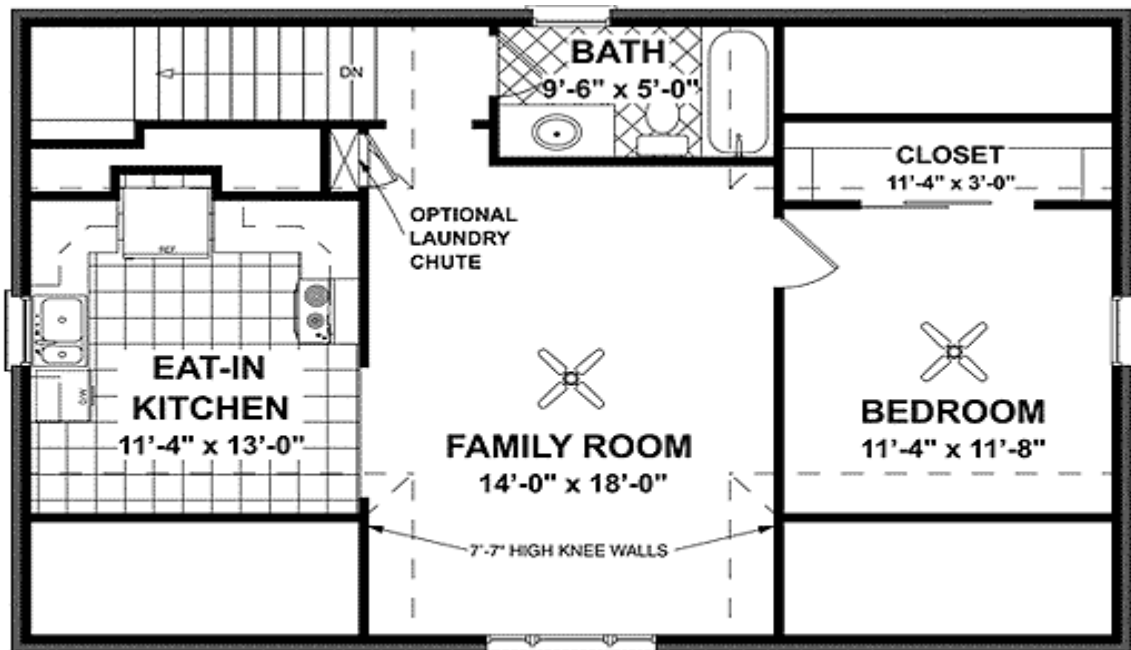
2nd Floor: 9'

Standard Foundations: Slab

Special Features: CAD Available, Narrow Lot, PDF

One Set	Five Sets	Eight Sets	Reproducible	PDF File	CAD
\$350	\$400	\$475	\$600	\$600	\$900

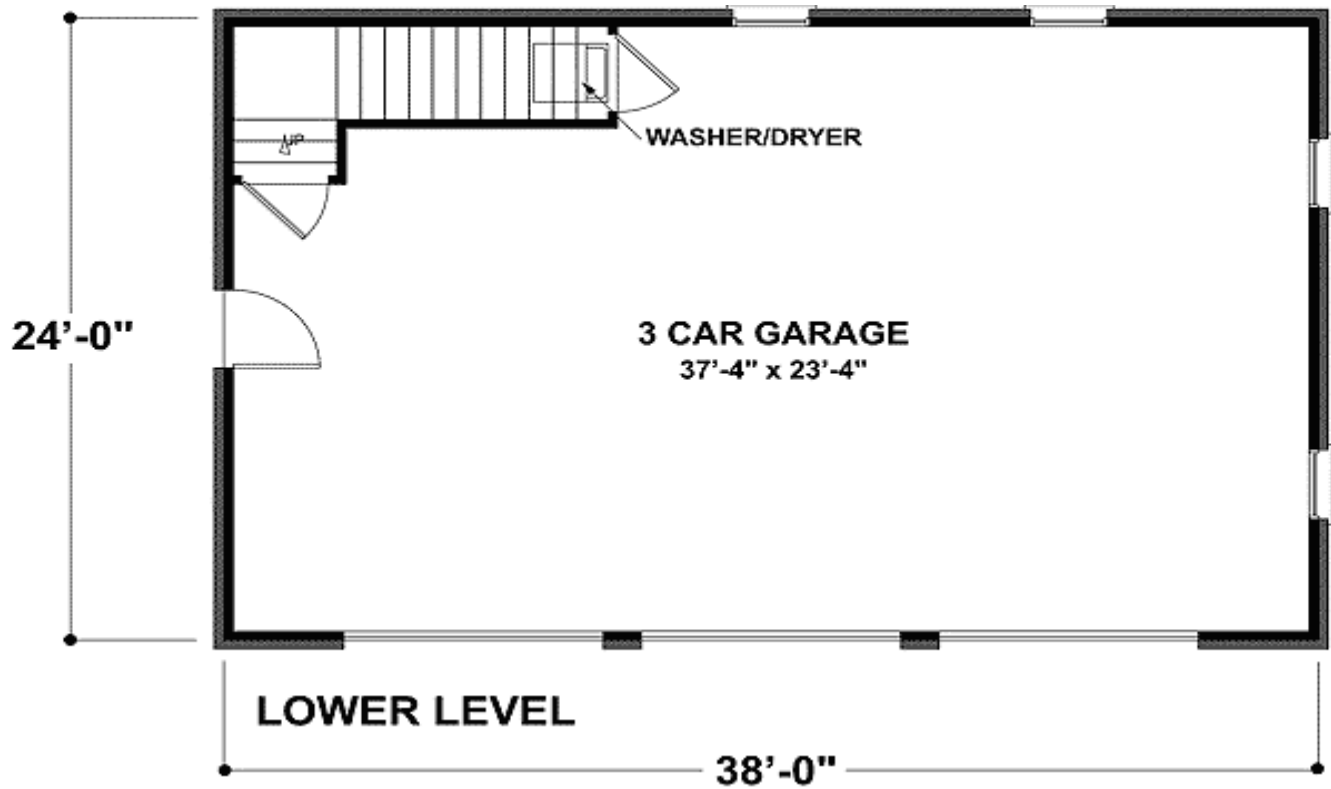
Main Level



UPPER LEVEL

HEATED SQUARE FOOTAGE: 750 (Including Stairs)

Lower Level



Elevation #2



Architectural Designs ...selling quality house plans for over 30 years.

Sides/Rear



LEFT ELEVATION



RIGHT ELEVATION



REAR ELEVATION