

Architectural Designs ...selling quality house plans for over 30 years.

Plan W2173DR: Possible In-Law Suite



House plans are Copyright © 2009 by our architects and designers.

- This spacious traditional home plan includes a master suite on the main level and a guest or in-law suite on the upper level.
- The main-level plan includes a kitchen, separated from the breakfast area by an angled snack bar, a formal dining room, a formal living room and family room, each with a fireplace, and a private master suite with private bath and large walk-in closet.
- Upstairs, two family bedrooms share a hall bath, while the guest suite features a private bath and a walk-in closet. Overlooking the foyer below, a loft could serve as either another family room or as a fifth bedroom.
- Need a home office? See house plan For a reverse layout, see house plan 21356DR which features a two-story home office.

Style: Canadian, Metric, Traditional

Total Living Area: 3500

Main Flr.: 2182

2nd Flr.: 1318

Basement Unfinished: 2,182 sq. ft.

Bonus: 442 sq. ft.

Entry: 72 sq. ft.

Total Square Feet: 6,885 sq. ft.

Attached Garage: 3 Car, 689 sq. ft.

Bedrooms: 4

Full Bathrooms: 3

Half Bathrooms: 1

Width: 70'

Depth: 50'

Maximum Ridge Height: 31'10"

Exterior Walls: 2x6

Ceiling Height:

Main Floor: 9'

2nd Floor: 8'

Standard Foundations: Basement

Alternate Foundations: Slab (\$295), Crawl (\$295)

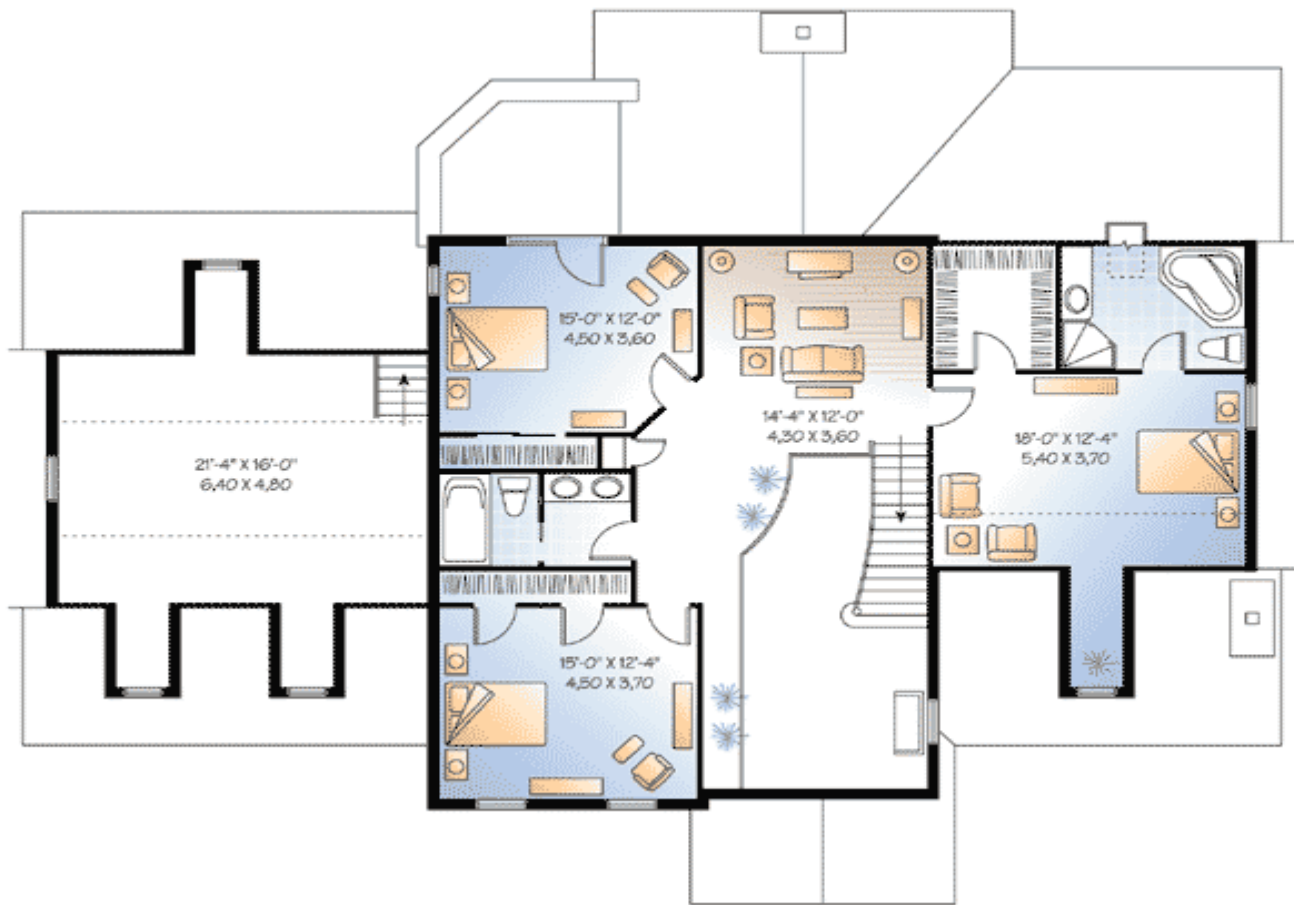
Special Features: 1st Floor Master Suite, Bonus Room, CAD Available, PDF

One Set	Five Sets	Eight Sets	Reproducible	PDF File	CAD
\$899	\$939	\$969	\$1,149	\$1,149	\$1,875

Main Level



2nd Level



Rear View

