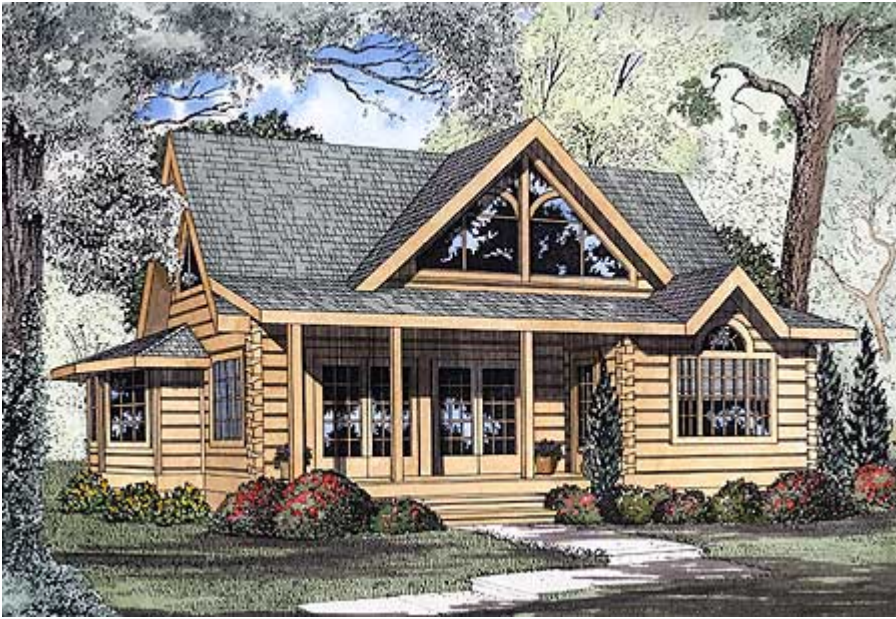


Plan W5999ND: Comfort Cabin



House plans are Copyright © 2009 by our architects and designers.

- Comfort is the key with this magnificent log home plan. Step upon the covered porch with two sets of French doors opening into the great room.
- Inside, you are greeted with a fireplace and view of a bay-shaped dining area and kitchen with bar seating.
- The main level master suite includes a large walk-in closet and bathroom with an extra large shower, double vanities and stacked washer/dryer closet.
- The upper level has a bedroom and bathroom with creative ceiling heights and balcony view to the great room below.
- Ceilings: 8' standard.
- Foundation: Basement, Crawl Space, Daylight Basement. Please specify your preference when ordering.

Style: Log

Total Living Area: 1449

Main Flr.: 1059

2nd Flr.: 390

Front Porch: 160 sq. ft.

Deck: 75 sq. ft.

Total Square Feet: 1,684 sq. ft.

Bedrooms: 2

Full Bathrooms: 2

Half Bathrooms: 1

Width: 39'10"

Depth: 39'8"

Maximum Ridge Height: 23'

Exterior Walls: Log

Ceiling Height:

Lower Floor: 8'

Standard Foundations: Slab, Crawl

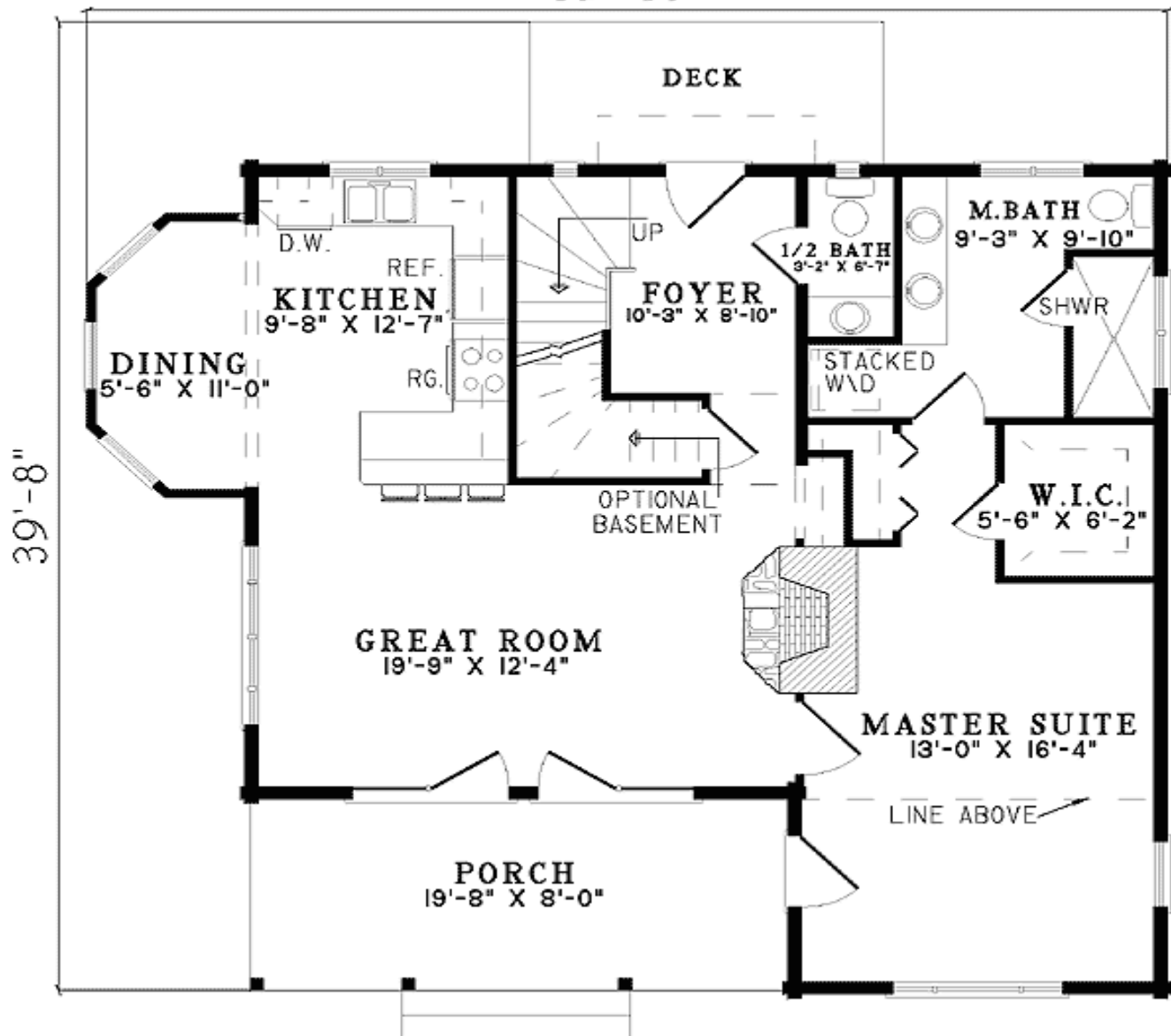
Alternate Foundations: Walkout (\$250), Basement (\$250)

Special Features: Narrow Lot, PDF

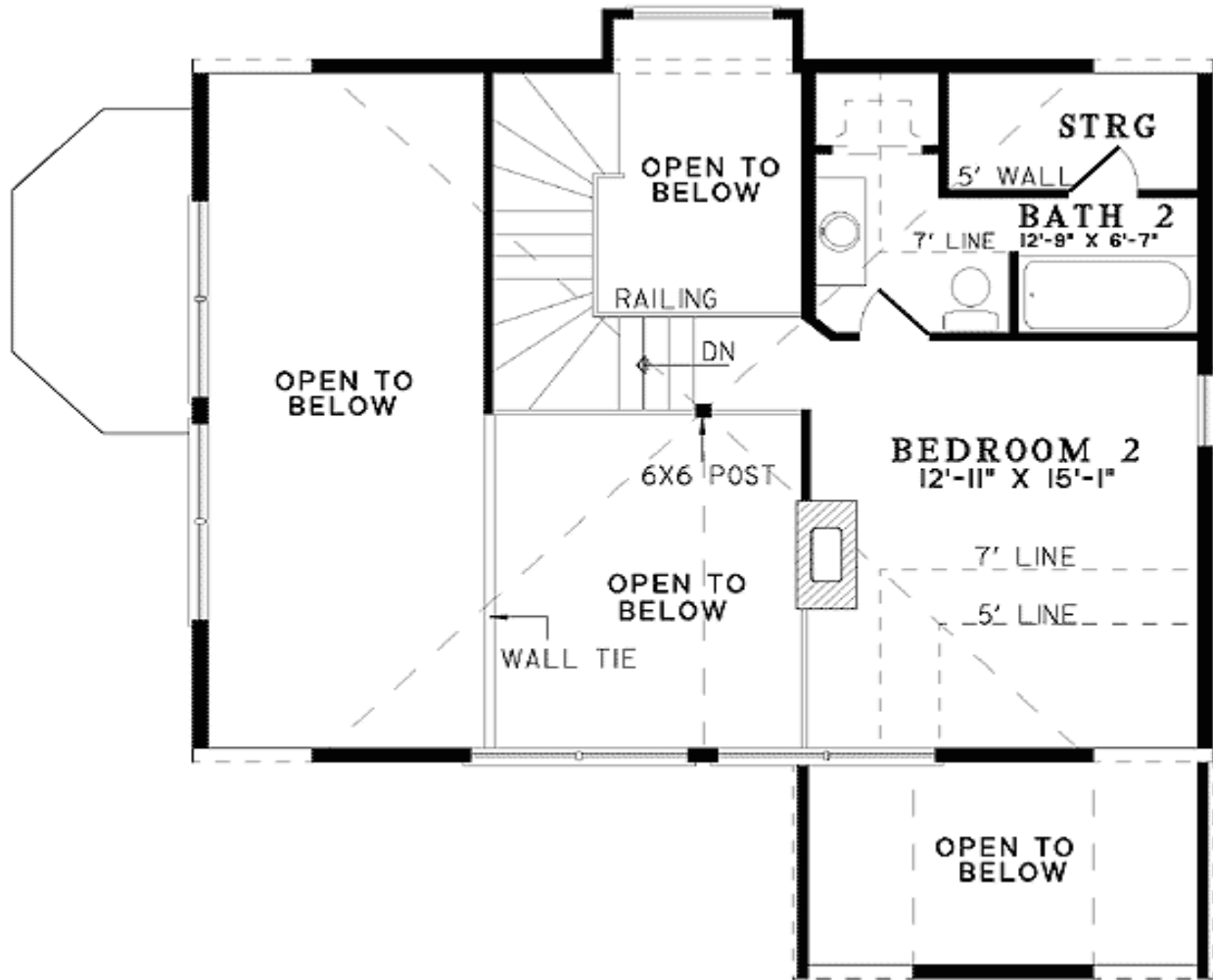
One Set	Five Sets	Eight Sets	Reproducible	PDF File	CAD
\$515	\$560	\$585	\$700	\$700	\$1,200

# Architectural Designs ...selling quality house plans for over 30 years.

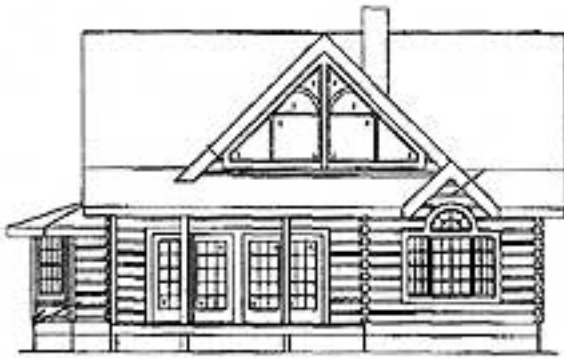
Main Level  
39'-10"



2nd Level



## Sides/Rear



Front elevation



Rear elevation



Right elevation



Left elevation