

# Architectural Designs ...selling quality house plans for over 30 years.

Plan W5021CZ: Formal Exterior, Informal Interior



House plans are Copyright © 2009 by our architects and designers.

- The formal facade of this compact design features a recessed entry sheltered by an arched and gabled roof. Inside, casual living spaces enhance informal living.
- A wide doorway on one side of the foyer accesses the dining room with its tray ceiling, high windows and space for a hutch. Straight ahead is the huge gathering room with a volume ceiling.
- Only an angled snack bar island divides the kitchen from the rest of the area, consisting of a breakfast room and a great room with a fireplace.
- Tucked behind the garage for privacy, the master suite is reached via double doors. A tray ceiling adorns the bedroom, which opens to a walk-in closet. The two-compartment, five-fixture bath includes a garden tub and a separate shower.
- On the other side of the house, another full bath serves two bedrooms. With the addition of French doors, one of these bedrooms can serve as a study.
- Foundation: basement.

Style: Traditional

Total Living Area: 1595

Main Flr.: 1595

Total Square Feet: 2,063 sq. ft.

Attached Garage: 2 Car, 468 sq. ft.

Bedrooms: 2, 3

Full Bathrooms: 2

Width: 52'8"

Depth: 42'8"

Maximum Ridge Height: 20'6"

Exterior Walls: 2x4

Optional Exterior Walls: 2x6 \$150

Ceiling Height:

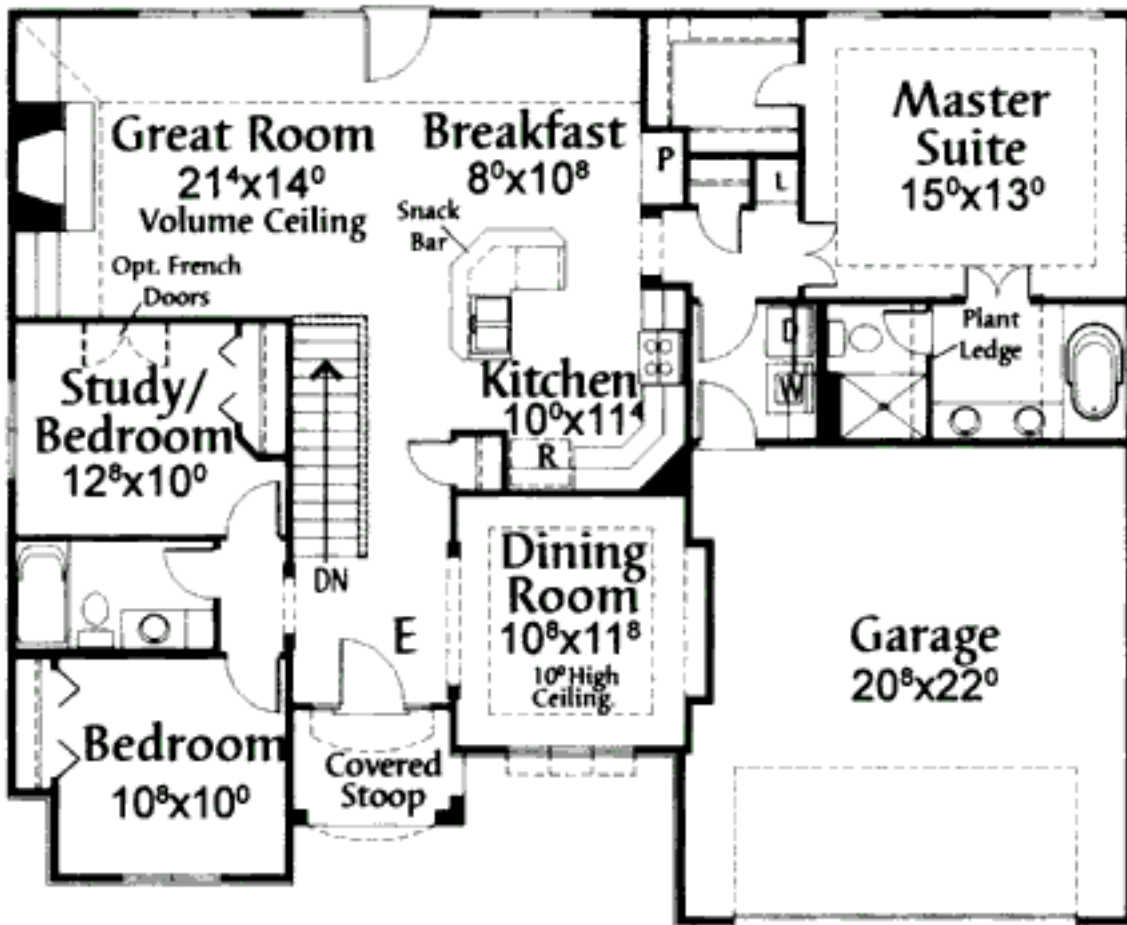
Standard Foundations: Basement

Alternate Foundations: Slab (\$300), Crawl (\$200)

Special Features: CAD Available, 1st Floor Master Suite, Den-Office-Library-Study, Jack & Jill Bath, Split Bedrooms

One Set	Five Sets	Eight Sets	Reproducible	CAD
\$645	\$795	\$885	\$795	\$2,500

## Main Level



Rear View

