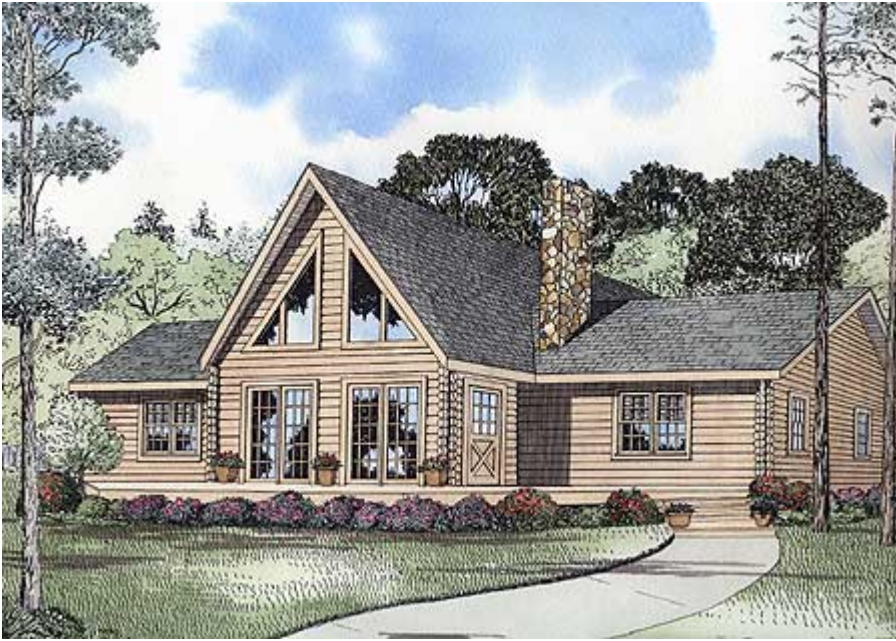


Architectural Designs ...selling quality house plans for over 30 years.

Plan W59016ND: Light-Filled Contemporary



House plans are Copyright © 2009 by our architects and designers.

- This contemporary log home plan provides a ton of natural light through a gable with fixed glass and French doors on the front sun deck.
- The Great room includes a rock fireplace and beautiful staircase leading to a loft above.
- A step saver kitchen and dining room are adjoined by bar counter seating and have a nearby sliding glass door to the rear yard.
- Two bedrooms on one end of the house share a bathroom while the master suite is privately located on the opposite side. This expansive master suite has a walk-in closet and private bathroom with linen storage and if desired, the potential to share the Great room fireplace.
- Ceilings: 8' standard.
- Foundation: Basement, crawl space, daylight basement. Please specify your preference when ordering.

Style: Log, Mountain

Total Living Area: 1502

Main Flr.: 1392

2nd Flr.: 110

Total Square Feet: 1,502 sq. ft.

Bedrooms: 3

Full Bathrooms: 2

Width: 52'

Depth: 40'

Maximum Ridge Height: 20'4"

Exterior Walls: Log

Ceiling Height:

Main Floor: 8'

Other: Vaulted Great Room

Standard Foundations: Crawl

Alternate Foundations: Walkout (\$250), Basement (\$250)

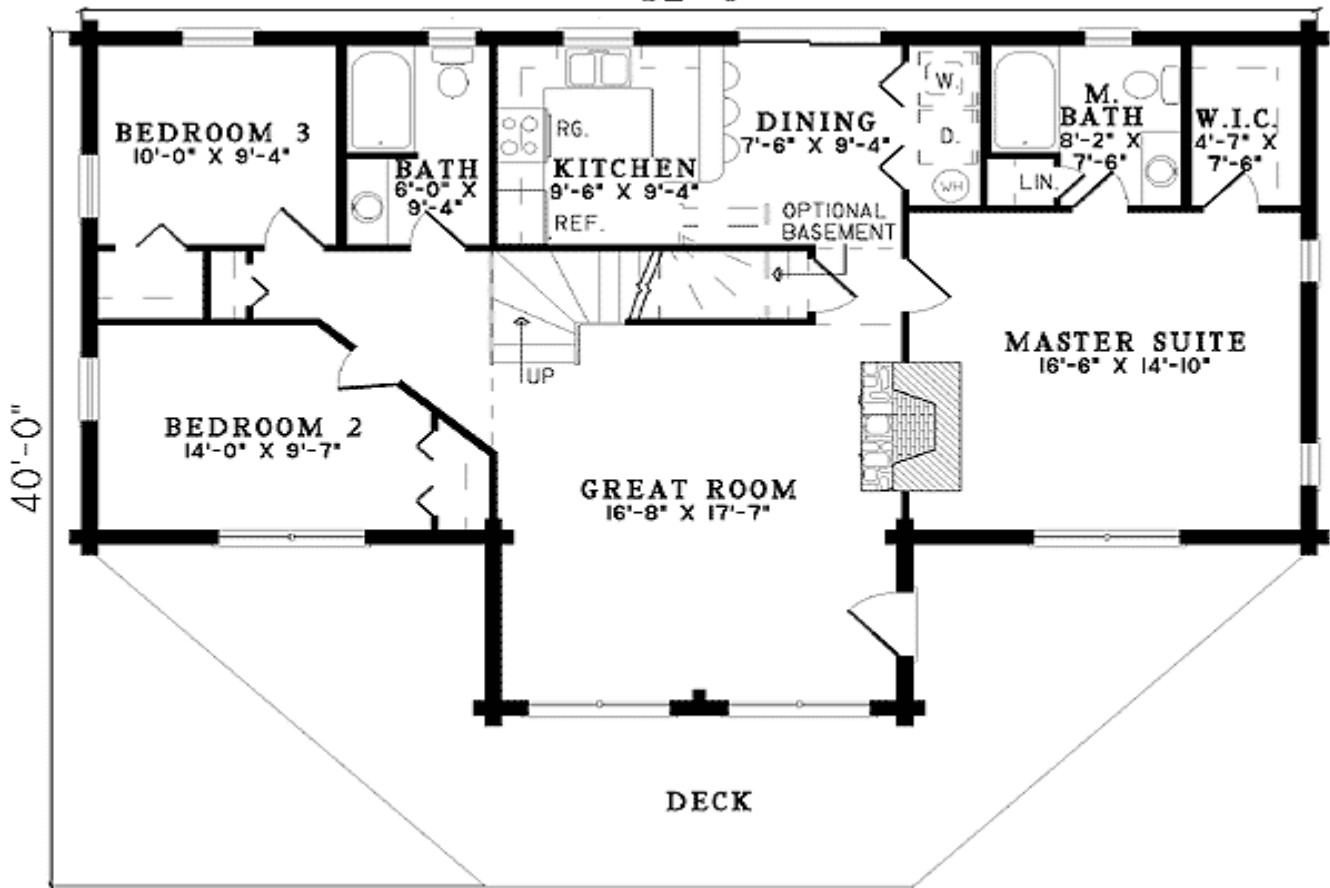
Special Features: PDF, 1st Floor Master Suite

One Set	Five Sets	Eight Sets	Reproducible	PDF File	CAD
\$545	\$610	\$640	\$790	\$790	\$1,350

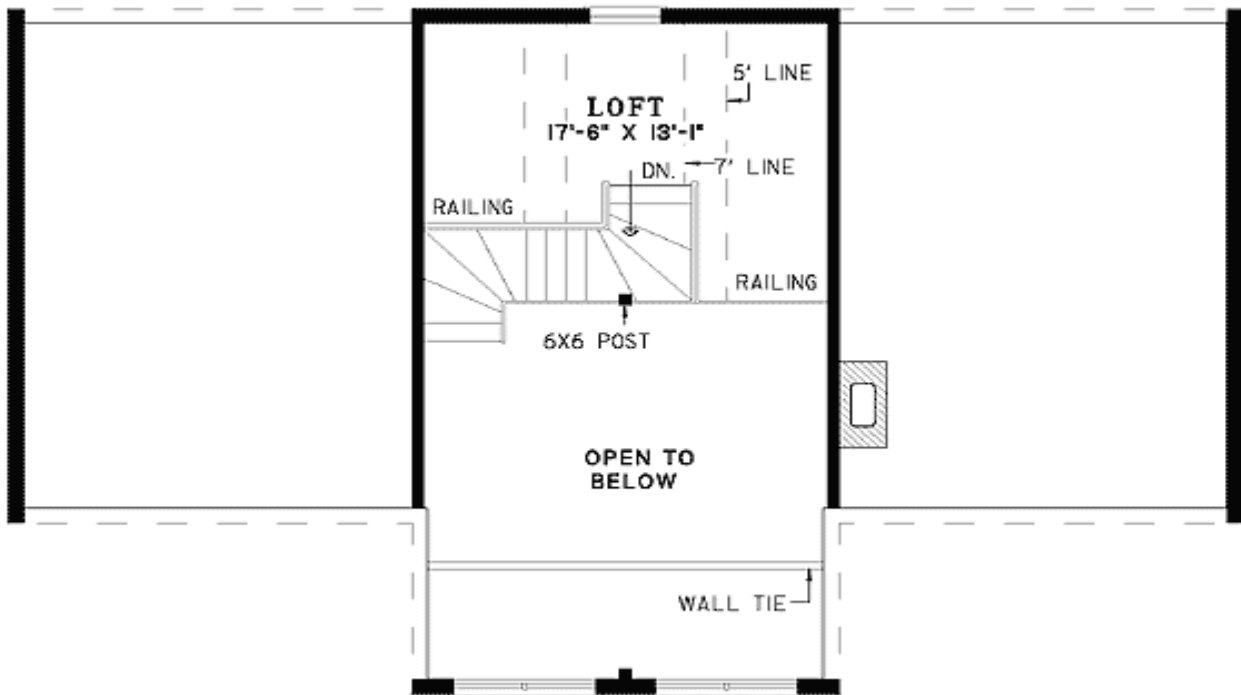
Architectural Designs ...selling quality house plans for over 30 years.

Main Level

52'-0"



2nd Level

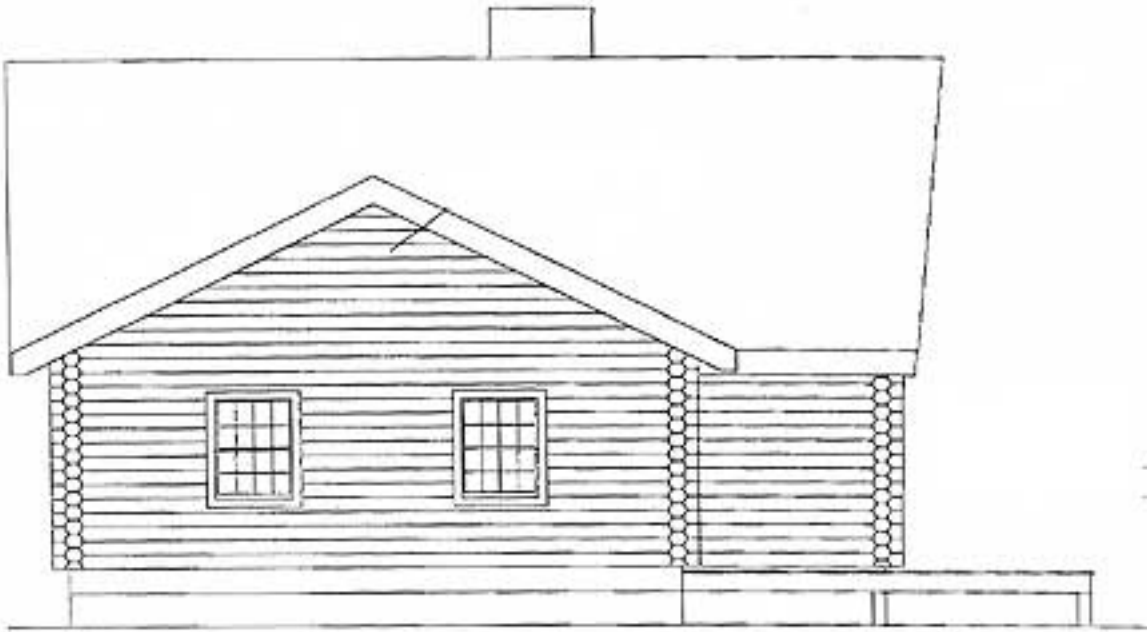


Elevation #2

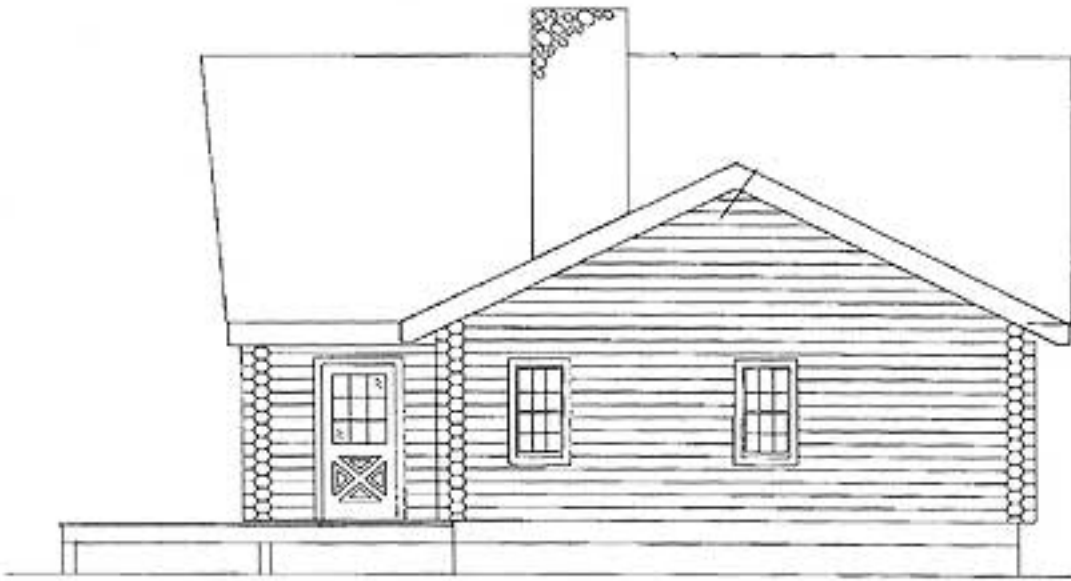
59016ND
Front



Left Side



Right Side



Rear View

