

Architectural Designs ...selling quality house plans for over 30 years.

Plan W89076AH: Rustic Ranch



House plans are Copyright © 2009 by our architects and designers.

- This rustic ranch with Craftsman details affords a curb appeal that's sure to grab your attention.
- The kitchen features an eat-in bar that overlooks the nook and great room.
- The great room is enhanced by a fireplace and built-ins and graced with columns and an arched soffit. A cozy fireplace making it useful year round warms the rear-screened porch.
- The master bedroom features a private bath and walk-in closet, while two additional bedrooms share a hall bath.
- The basement level offers room to grow with plans for two additional bedrooms, a recreation room, wet bar and plenty of storage.
- Related Plan: Don't need a finished lower level? Save money with house plan 89212AH and 8920AH.

Style: Country, Craftsman

Total Living Area: 3839

Main Flr.: 2370

Lower Level: 1469

Total Square Feet: 4,620 sq. ft.

Attached Garage: 3 Car, 781 sq. ft.

Bedrooms: 5

Full Bathrooms: 4

Width: 75'4"

Depth: 54'

Maximum Ridge Height: 29'2"

Exterior Walls: 2x6

Ceiling Height:

Main Floor: 9'

Other: 11' Dining & BR#3; Cathedral Entry & Great Room

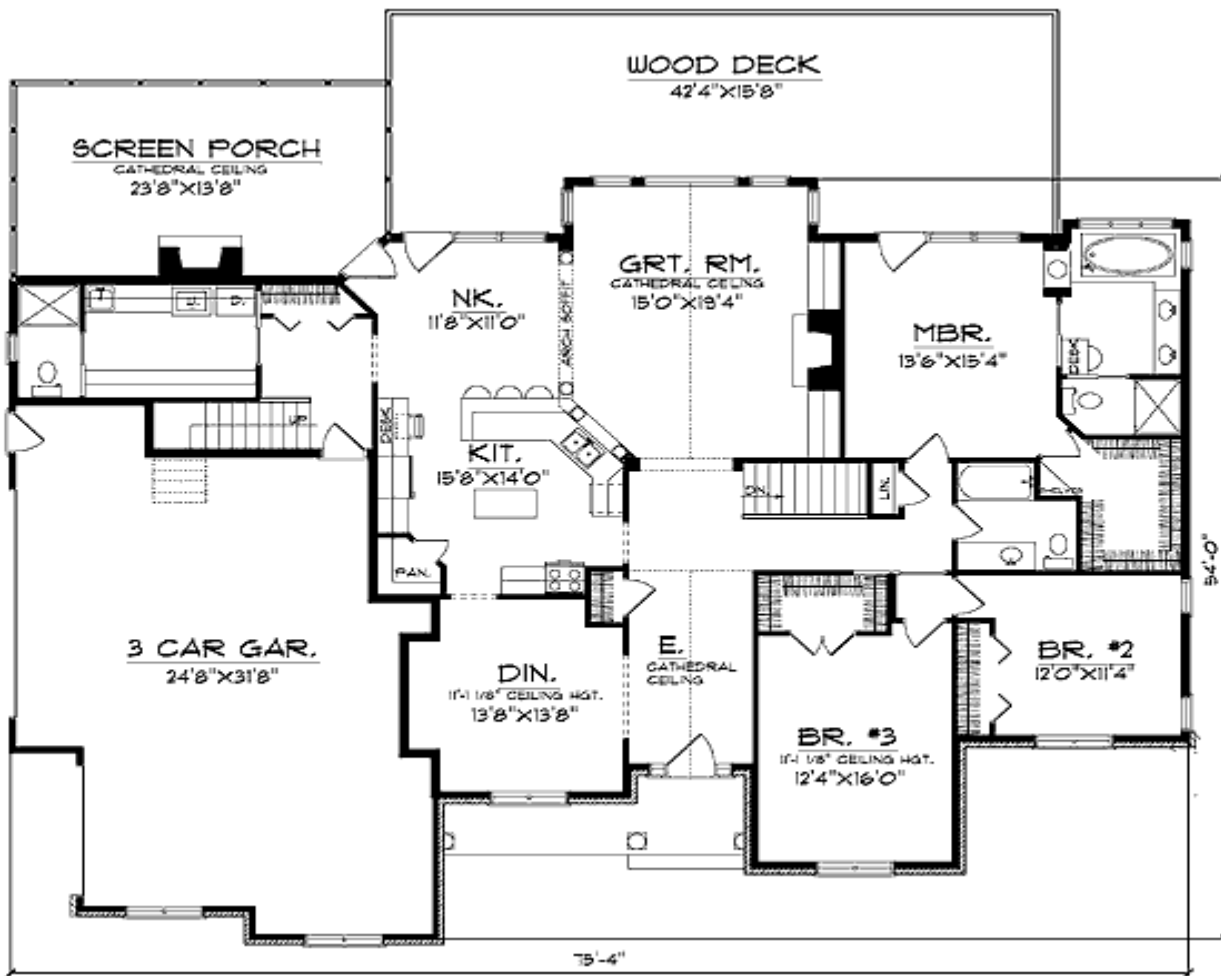
Standard Foundations: Slab, Walkout, Crawl

Alternate Foundations: Slab (\$250), Walkout (no charge), Crawl (\$250)

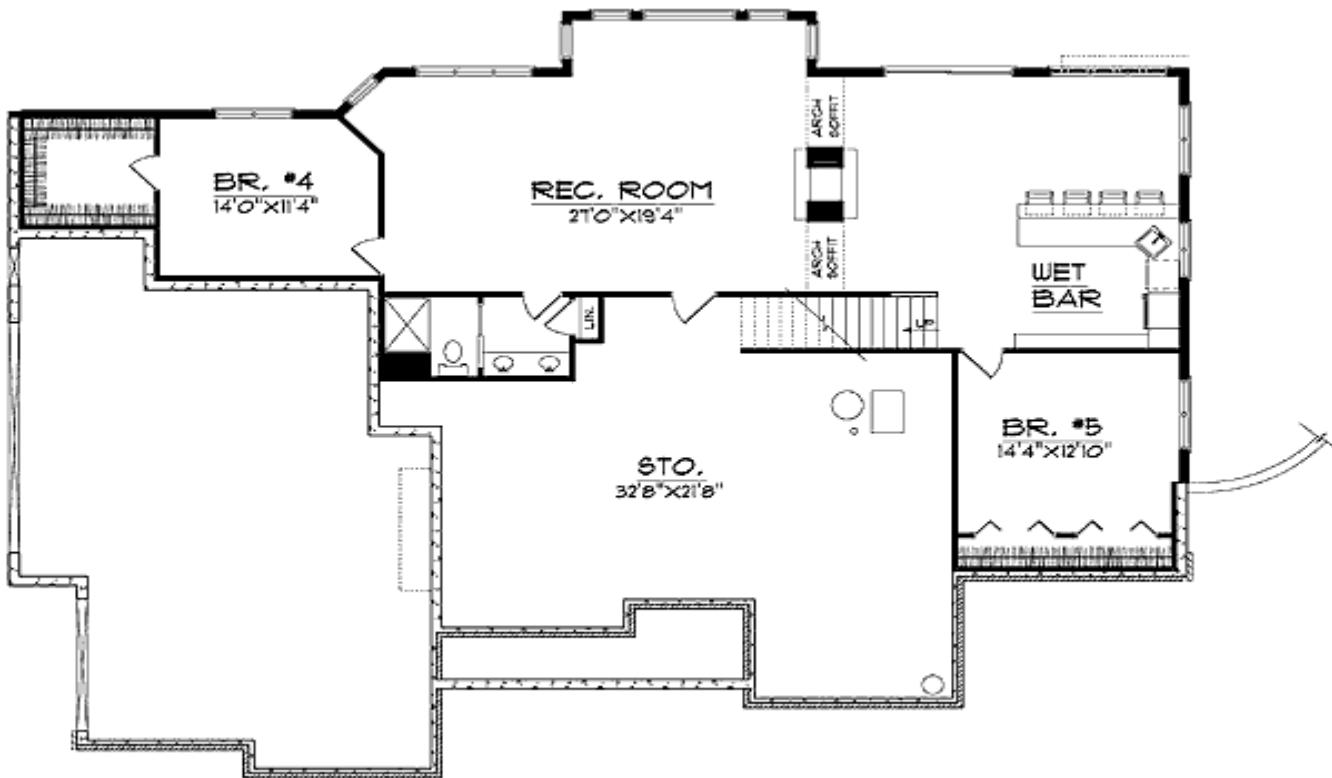
Special Features: CAD Available, Sloping Lot, PDF, 1st Floor Master Suite

One Set	Five Sets	Eight Sets	Reproducible	PDF File	CAD
\$921	\$998	\$1,075	\$1,267	\$1,420	\$1,996

Main Level



Lower Level



Rear View

