

Architectural Designs ...selling quality house plans for over 30 years.

Plan W43018PF: Quaint Cottage



House plans are Copyright © 2009 by our architects and designers.

- The highly detailed exterior of this quaint vacation home is reminiscent of a bygone era with its scalloped rake boards, brackets and a second floor porch.
- Inside the living room features a wood stove and a snack bar pass-through from the kitchen.
- A large master bedroom with a bay window and walk-in closet occupies the left wing of the home.
- Two bedrooms and a bath on the second floor complete the design.
- Related Plans: For slightly alternate dimensions, see house plan 4719PR.

Style: Cottage, Tudor, Vacation

Total Living Area: 1317

Main Flr.: 836

2nd Flr.: 481

Front Porch: 187 sq. ft.

Total Square Feet: 1,504 sq. ft.

Bedrooms: 3

Full Bathrooms: 2

Width: 38'2"

Depth: 34'

Maximum Ridge Height: 28'5"

Exterior Walls: 2x6

Ceiling Height:

Main Floor: 8'

2nd Floor: 9'

Standard Foundations: Crawl

Special Features: Narrow Lot, PDF

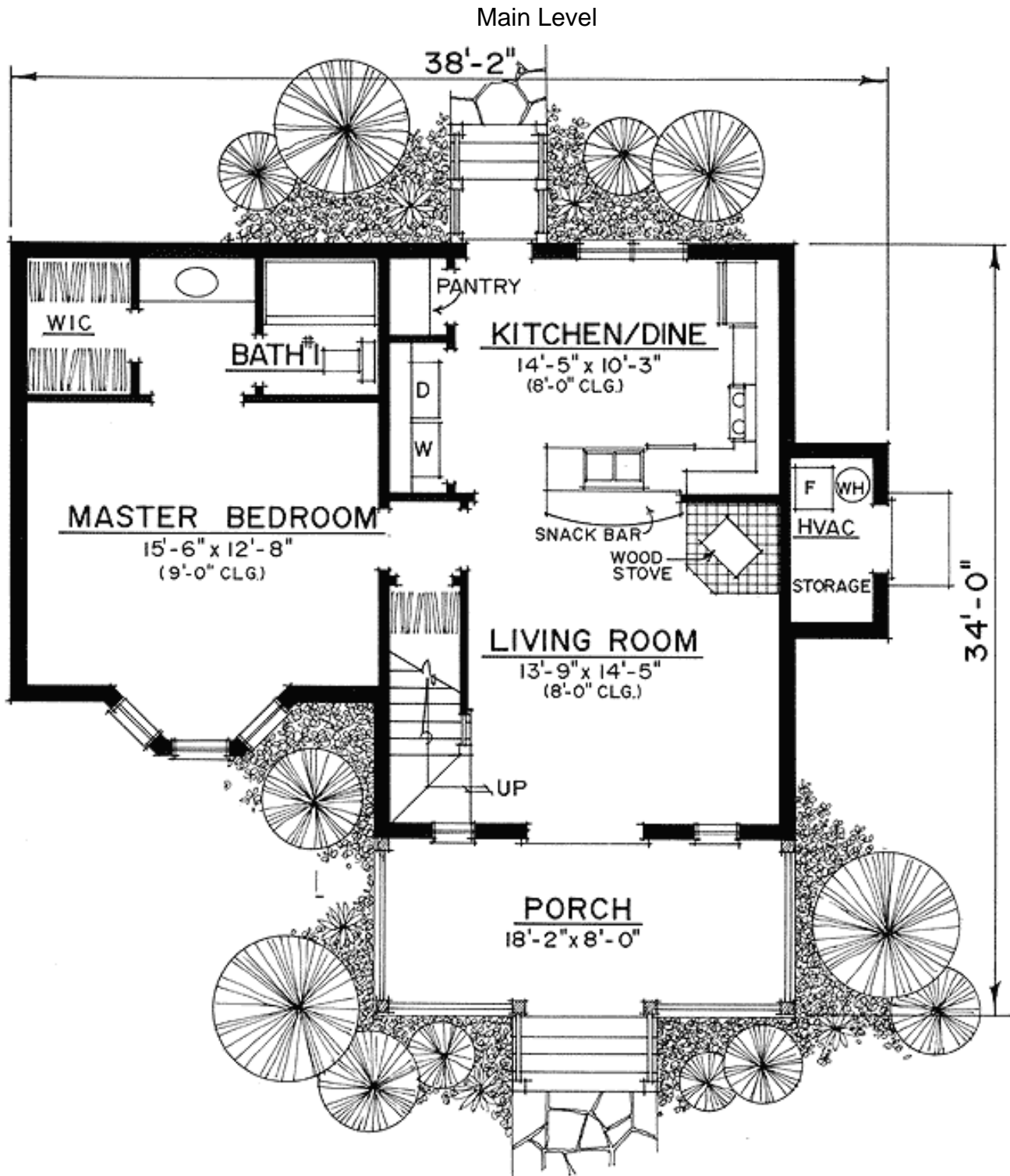
One Set
\$395

Five Sets
\$460

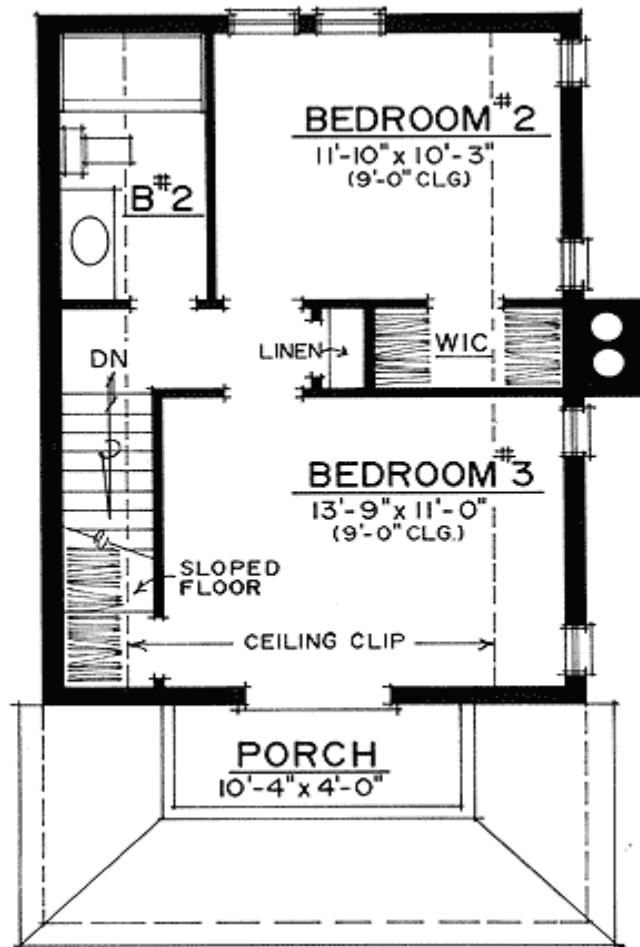
Eight Sets
\$505

Reproducible
\$605

PDF File
\$605



2nd Level



Rear View

