

Architectural Designs ...selling quality house plans for over 30 years.

Plan W33564EB: French Country Classic



House plans are Copyright © 2009 by our architects and designers.

- Truly created in the old world flavors of France, this luxury home plan is true to older French vernacular with its dual-slope roofline, finials, round turret and copper touches - railings, chimney pots and eaves - right down to its garage doors.
- The grand entry opens up to a formal parlour with a majestic coffered ceiling and triple french doors to the rear veranda.
- An oversized pub area, wine room, and nook compliment the glamorous kitchen and leisure room combination. A butler's pantry and wet bar makes serving the formal dining room easy.
- The master suite has a sitting area with a vaulted ceiling and a morning bar perfect to start your day. Into the master bath and on your right is a huge walk-in closet, back to back vanities are centered in the bathroom, along with a soaking tub and a large walk-in shower.
- The study comes complete with it's own entry, a full service wet bar, a fireplace and it's own private bath perfect for any business meeting.
- Head upstairs by either an elevator or the staircase and you will be greeted by rows of columns and arches which lead to the theater and media rooms.
- Two additional guest suites come complete with private baths and access to the rear facing balcony.
- A secondary master bedroom completes this magnificent home plan.

Style: European, French Country, Luxury

Total Living Area: 8831

Main Flr.: 5969

2nd Flr.: 2862

Deck: 1,394 sq. ft.

Balcony/Veranda: 1,340 sq. ft.

Entry: 106 sq. ft.

Total Square Feet: 12,717 sq. ft.

Attached Garage: 3 Car, 1,046 sq. ft.

Bedrooms: 4

Full Bathrooms: 4

Half Bathrooms: 4

Width: 104'

Depth: 122'1"

Maximum Ridge Height: 32'4"

Exterior Walls: Block or 2x4 or 2x6

Ceiling Height:

Main Floor: 12'

2nd Floor: 10'

Other: 12'-13' Tray MBR

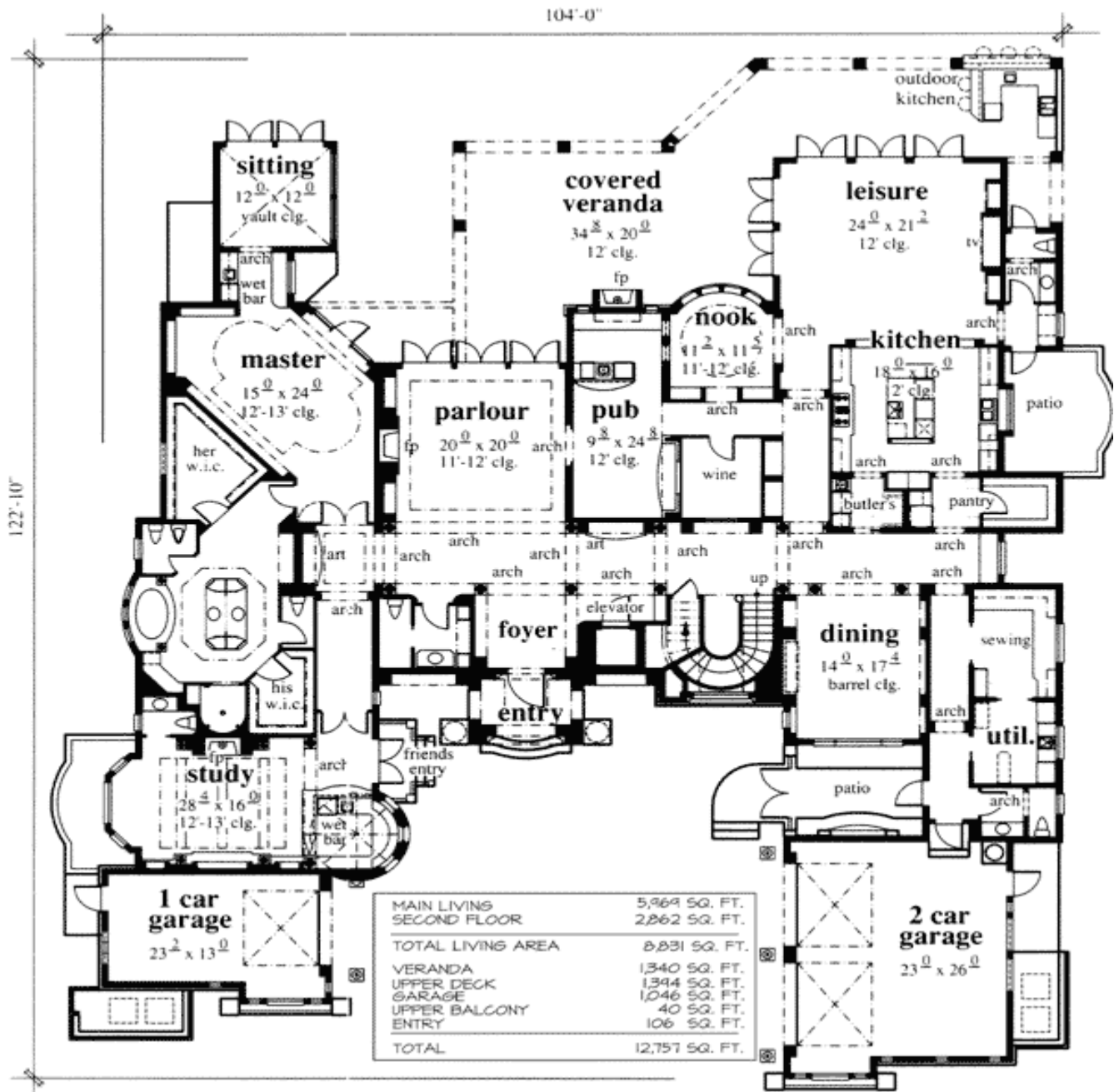
Standard Foundations: Slab

Special Features: Media-Game-Home Theater, MBR Sitting Area, CAD Available, 1st Floor Master Suite, PDF, Den-Office-Library-Study, Photo Gallery, Butler Walk-in Pantry

Reproducible	PDF File	CAD
\$4,416	\$4,466	\$4,616

Architectural Designs ...selling quality house plans for over 30 years.

Main Level



Architectural Designs :: 57 Danbury Road :: Wilton, CT 06897

USA & Canada 1-800-854-7852 or 1-877-229-2447 :: International 262-521-4596

Fax 1-203-761-8600 :: Email: info@architecturaldesigns.com

2nd Level

