

Architectural Designs ...selling quality house plans for over 30 years.

Plan W3422VL: Open Living Area



House plans are Copyright © 2009 by our architects and designers.

- In back of this two-story design, a screened porch off the dining room offers an ideal outdoor eating venue.
- Inside, an open sitting area upstairs overlooks the 18'6" two-story great room with its fireplace. The great room forms one large space with the dining room and the open kitchen, broken only by a diagonal island with a cooktop and snack bar. A walk-in pantry closet serves this area.
- The first-floor master suite is privately sited. Two walk-in closets open off the bedroom. In the bath are his and her vanities. A walk-in shower and a whirlpool tub complete the bathroom.
- On the second floor, both bedrooms open to the sitting area, and bedroom three also opens directly to the bath on this floor. Vaulted bonus space over the garage can be expanded in the future.
- Foundation options: basement, slab or crawl space. Specify when ordering.

Style: Country, Traditional

Total Living Area: 1815

Main Flr.: 1257

2nd Flr.: 558

Front Porch: 114 sq. ft.

Rear Porch: 126 sq. ft.

Total Square Feet: 2,561 sq. ft.

Attached Garage: 2 Car, 506 sq. ft.

Bedrooms: 3

Full Bathrooms: 2

Half Bathrooms: 1

Width: 47'

Depth: 52'

Maximum Ridge Height: 28'

Exterior Walls: 2x4

Ceiling Height:

Main Floor: 9'

2nd Floor: 8'

Other: 19' Great Room

Standard Foundations: Slab, Basement, Crawl

Special Features: Narrow Lot

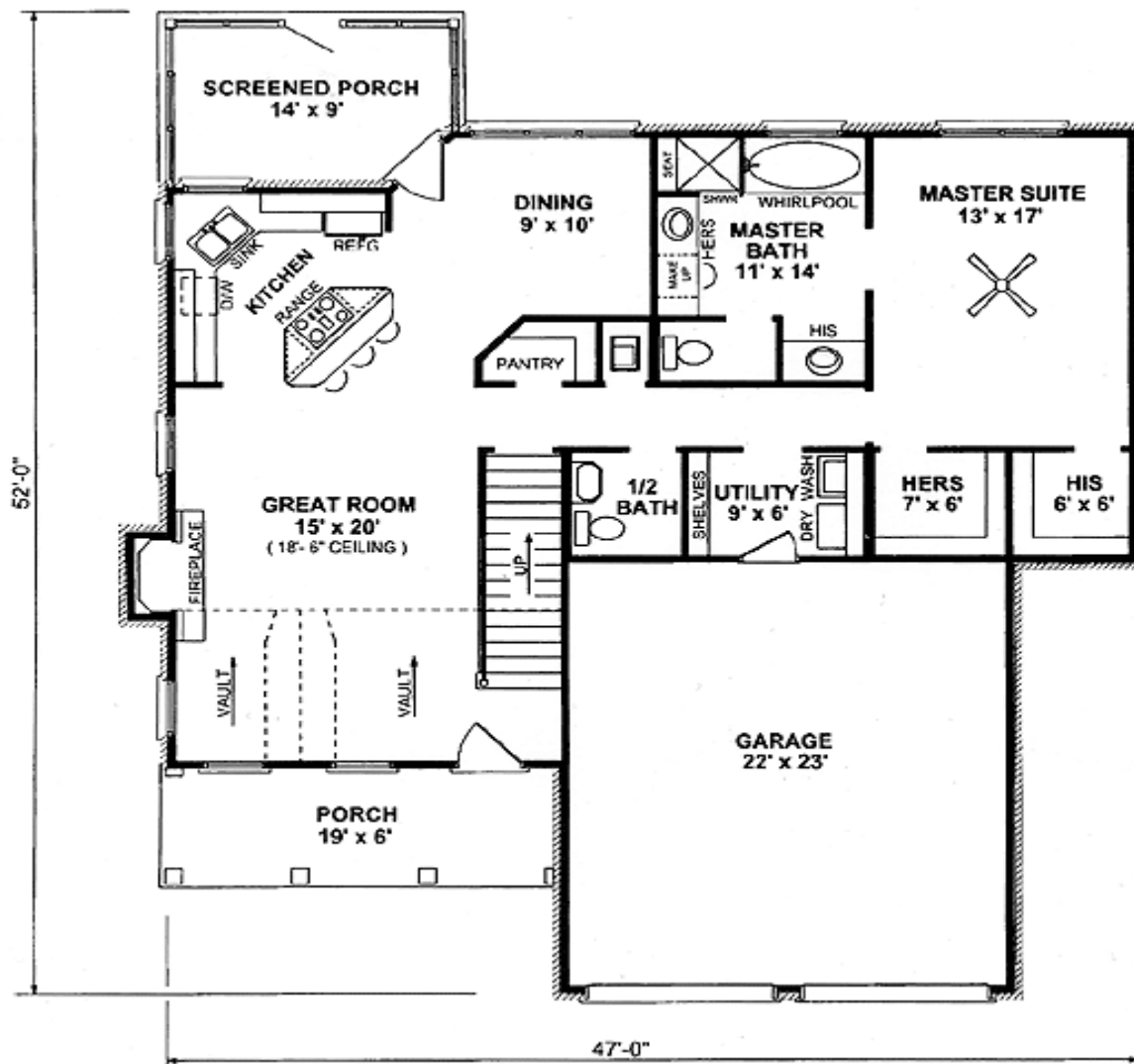
One Set
\$510

Five Sets
\$595

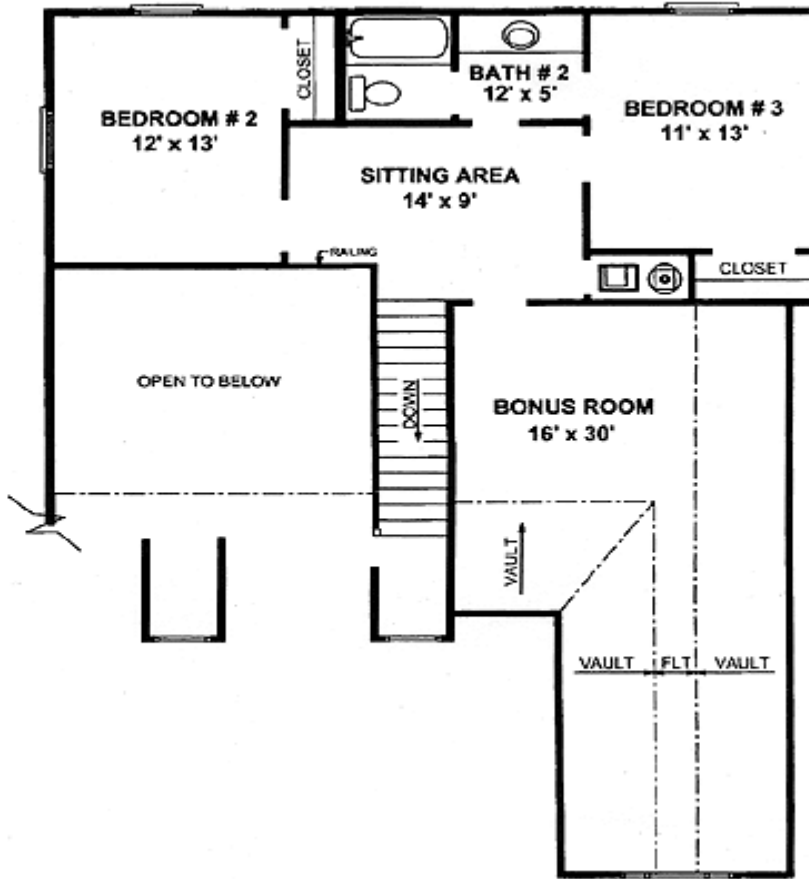
Eight Sets
\$650

Reproducible
\$725

Main Level



2nd Level



Rear View

