

Architectural Designs ...selling quality house plans for over 30 years.

Plan W5061CZ



House plans are Copyright © 2009 by our architects and designers.

Style: Traditional

Total Living Area: 2520

Main Flr.: 1230

2nd Flr.: 1290

Basement Unfinished: 1,110 sq. ft.

Porch, Combined: 102 sq. ft.

Deck: 276 sq. ft.

Total Square Feet: 4,913 sq. ft.

Attached Garage: 3 Car, 905 sq. ft.

Bedrooms: 4

Full Bathrooms: 3

Half Bathrooms: 1

Width: 62'8"

Depth: 49'

Maximum Ridge Height: 28'7"

Exterior Walls: 2x4

Optional Exterior Walls: 2x6 \$150

Ceiling Height:

Main Floor: 9'

2nd Floor: 8'

Other: 2-Story Entry

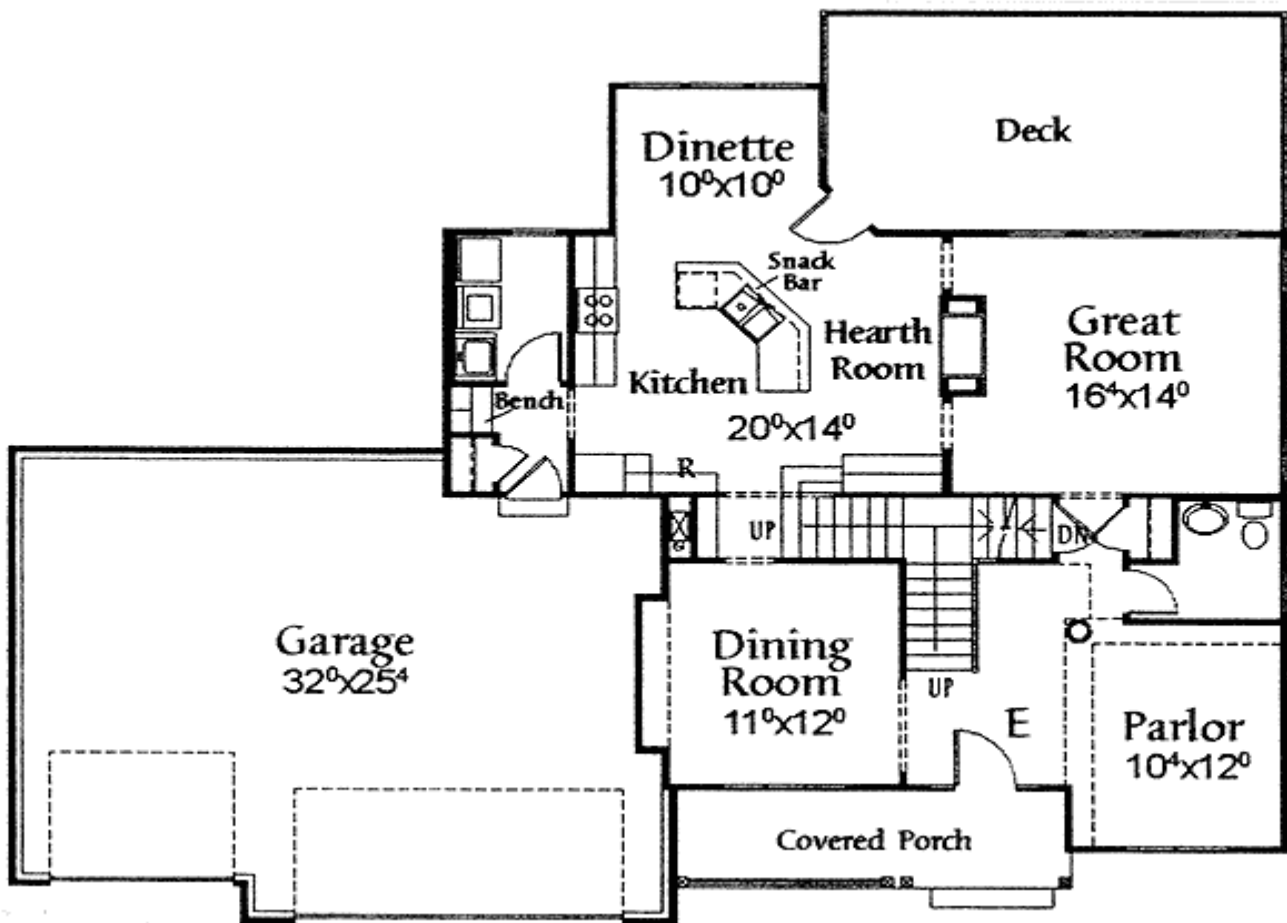
Standard Foundations: Basement

Alternate Foundations: Slab (\$300), Crawl (\$200)

Special Features: CAD Available, 1st Floor Master Suite, MBR Sitting Area

One Set	Five Sets	Eight Sets	Reproducible	CAD
\$695	\$845	\$935	\$845	\$2,500

Main Level



2nd Level

