

# Architectural Designs ...selling quality house plans for over 30 years.

Plan W5023CZ: Deluxe Master Suite



House plans are Copyright © 2009 by our architects and designers.

- Compact and traditional, this gabled design includes an inviting front porch that is big enough for a swing, the better to watch the world go by.
- With the addition of double doors to the foyer, the front-facing bedroom converts to a parlor or study. Notice the walk-in closet in this room, which is separated from the rear bedroom by a full bath with its own linen closet.
- A 10-foot ceiling adds a sense of space to both the foyer and the great room, which focuses on a fireplace and leads into the dining area. Arched openings are found between the spacious kitchen and the great room, as well as between the kitchen and the dining area.
- The secluded master suite features a vaulted bedroom ceiling and a large, elegant bath with a walk-in closet, a corner garden tub, a separate shower, twin sinks and a commode closet.
- Foundation: basement.

Style: Traditional

Total Living Area: 1423

Main Flr.: 1423

Total Square Feet: 1,871 sq. ft.

Attached Garage: 2 Car, 448 sq. ft.

Bedrooms: 3, 2

Full Bathrooms: 2

Width: 51'

Depth: 48'6"

Maximum Ridge Height: 19'

Exterior Walls: 2x4

Optional Exterior Walls: 2x6 \$150

Ceiling Height:

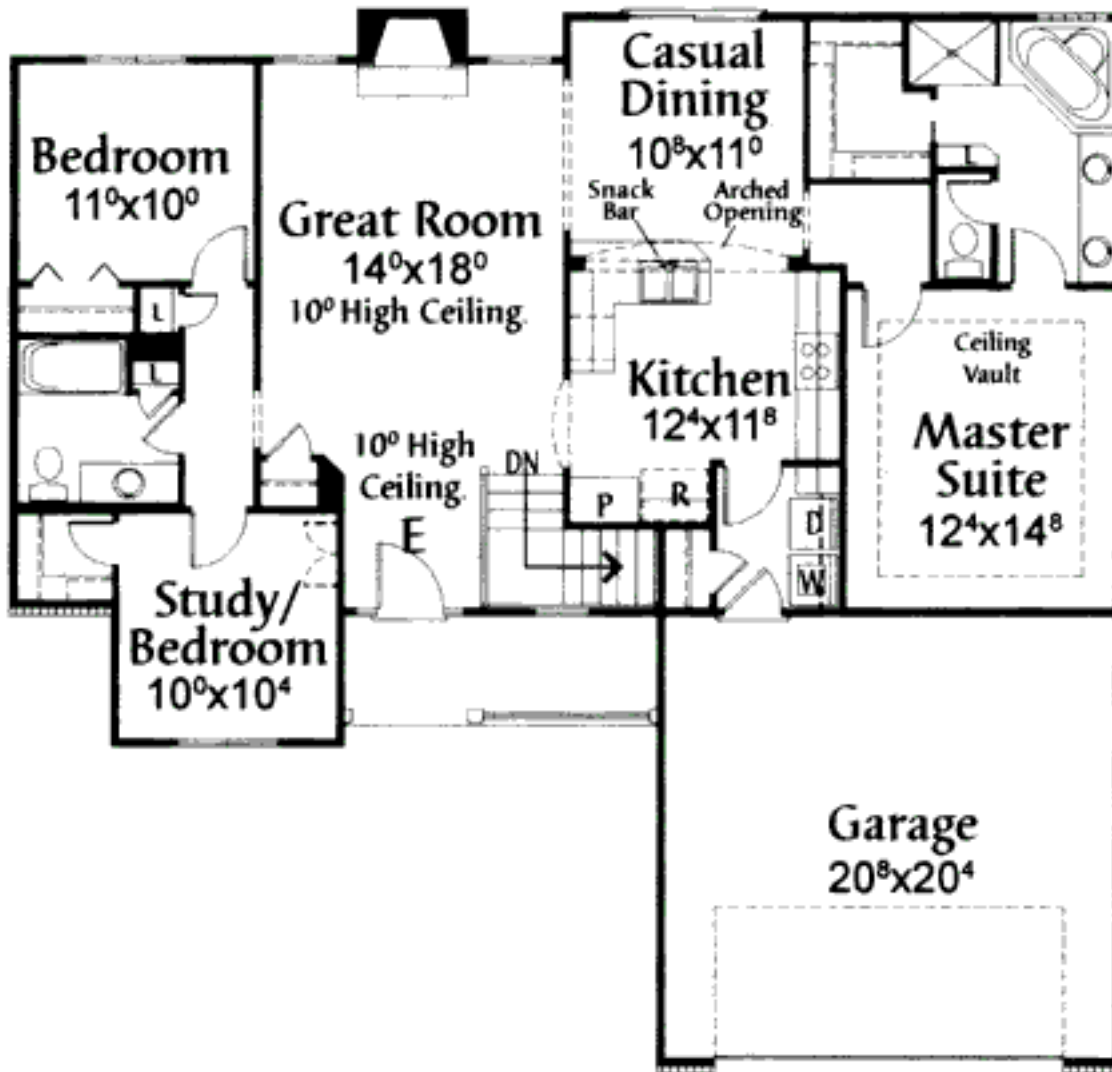
Standard Foundations: Basement

Alternate Foundations: Slab (\$300), Crawl (\$200)

Special Features: 1st Floor Master Suite, CAD Available

One Set	Five Sets	Eight Sets	Reproducible	CAD
\$645	\$795	\$885	\$795	\$2,500

## Main Level



Rear View

