

Architectural Designs ...selling quality house plans for over 30 years.

Plan W9042PD: Dramatic Stone Tower



House plans are Copyright © 2009 by our architects and designers.

- A dramatic stair tower graces the stone exterior of this European style home plan with a steep hipped roof.
- The large entry foyer opens to the living room with two sets of double doors, a bay window and a warm fireplace. The dining room boasts lots of windows and easy access to the kitchen.
- Located on the second floor are three bedrooms, each with walk-in closet, a hall bath and bonus space.
- As an added bonus you'll find an optional family room over the garage. It is accessible from the landing created as you walk up the turret and then angle towards the upstairs bedrooms.
- Ceilings: 9' first floor; 8' second floor.

Style: Canadian, European, Metric

Total Living Area: 1610

Main Flr.: 798

2nd Flr.: 812

Basement Unfinished: 798 sq. ft.

Bonus: 222 sq. ft.

Total Square Feet: 2,907 sq. ft.

Attached Garage: 1 Car, 277 sq. ft.

Bedrooms: 3

Full Bathrooms: 1

Half Bathrooms: 1

Width: 28'

Depth: 32'

Maximum Ridge Height: 28'

Exterior Walls: 2x6

Ceiling Height:

Main Floor: 9'

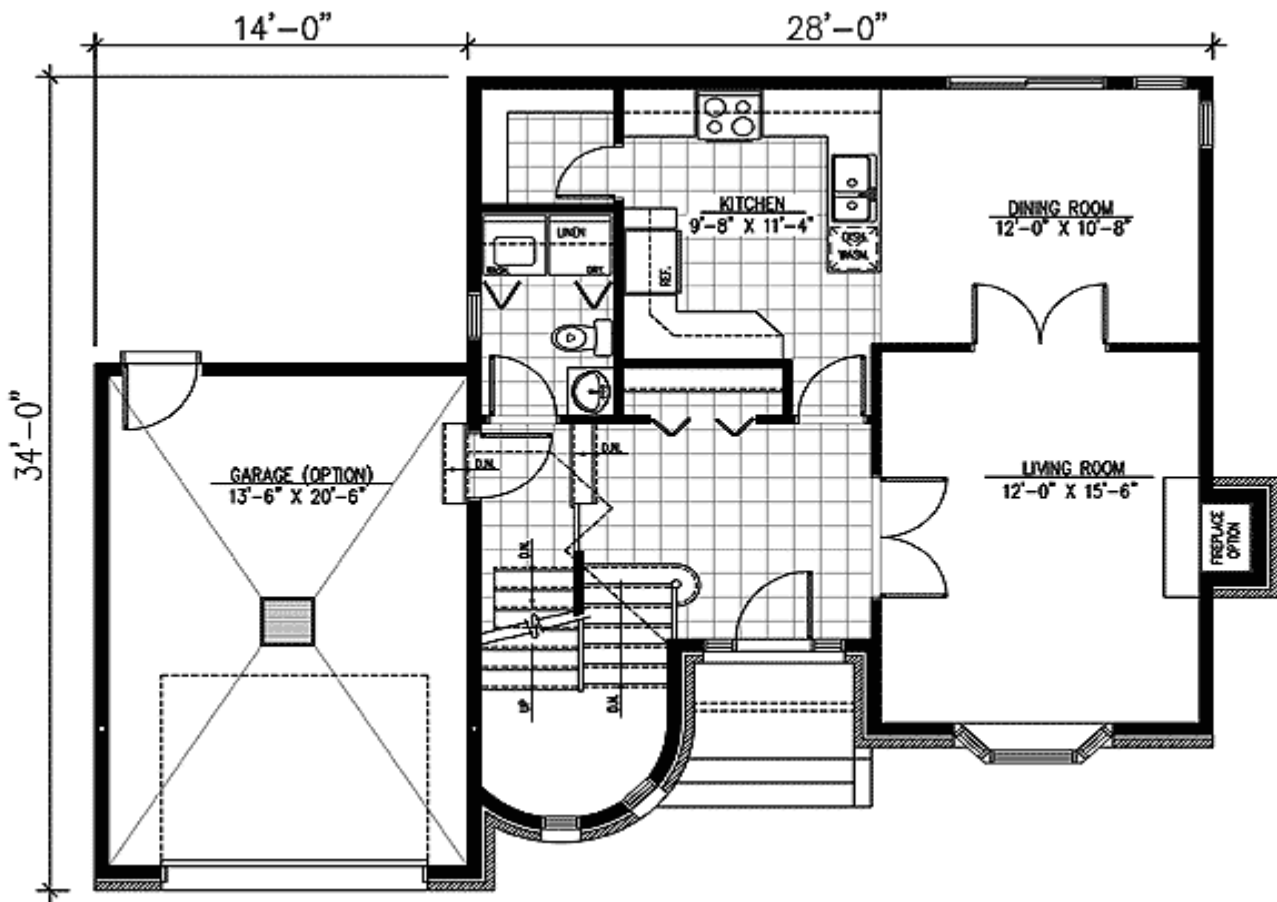
2nd Floor: 8'

Standard Foundations: Basement

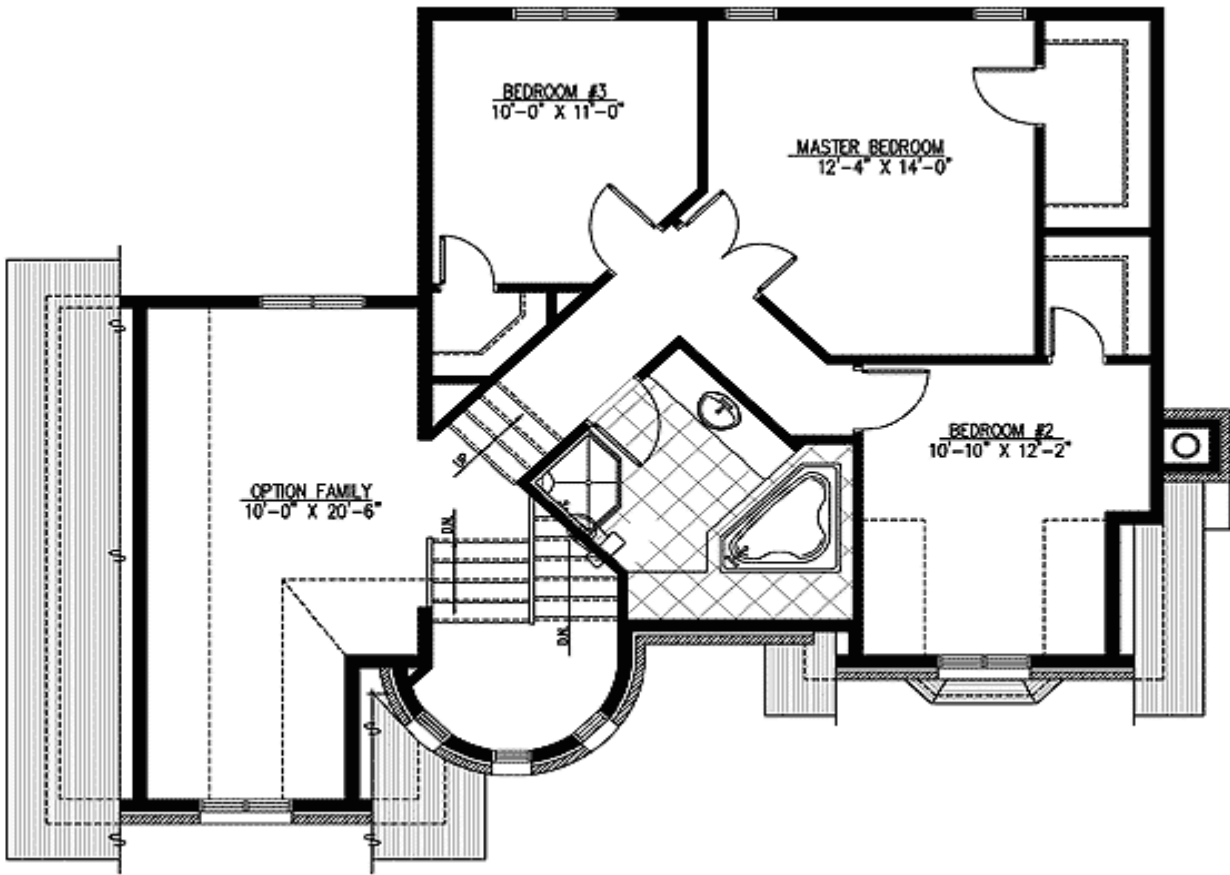
Special Features: Narrow Lot, PDF, CAD Available, Bonus Room

One Set	Five Sets	Eight Sets	Reproducible	PDF File	CAD
\$550	\$625	\$650	\$845	\$845	\$1,295

Main Level



2nd Level



Left Side



LEFT ELEVATION

Right Side



RIGHT ELEVATION

Rear View



REAR ELEVATION