

Architectural Designs ...selling quality house plans for over 30 years.

Plan W21532DR: Looking Grand



House plans are Copyright © 2009 by our architects and designers.

- This house plan is an exciting place to call home. It boasts features like main-level ceilings that reach 9', a home office, a highly functional kitchen with integrated breakfast room and a family-and-media room that lends fireplace warmth to the dining area.
- Also part of this design are four spacious bedrooms and a second floor family room with a fireplace, 2.5 baths, a tidy laundry area and two-car garage.

Style: Canadian, Metric, Southern, Split Level

Total Living Area: 3181

Main Flr.: 1361

2nd Flr.: 1820

Total Square Feet: 3,640 sq. ft.

Attached Garage: 2 Car, 459 sq. ft.

Bedrooms: 4

Full Bathrooms: 2

Half Bathrooms: 1

Width: 42'

Depth: 52'

Maximum Ridge Height: 43'8"

Exterior Walls: 2x6

Ceiling Height:

 Main Floor: 9'

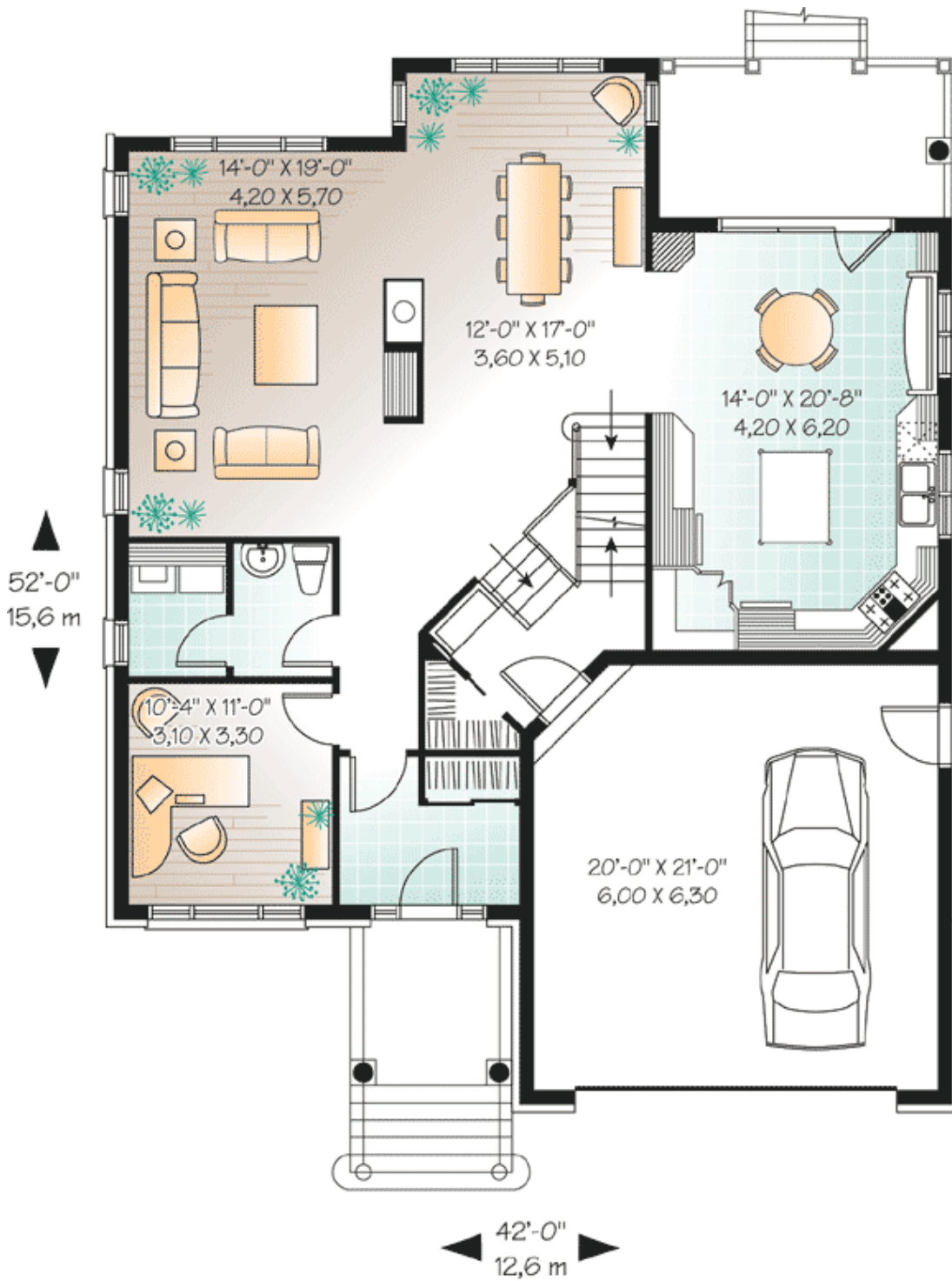
Standard Foundations: Basement

Alternate Foundations: Slab (\$295), Crawl (\$295)

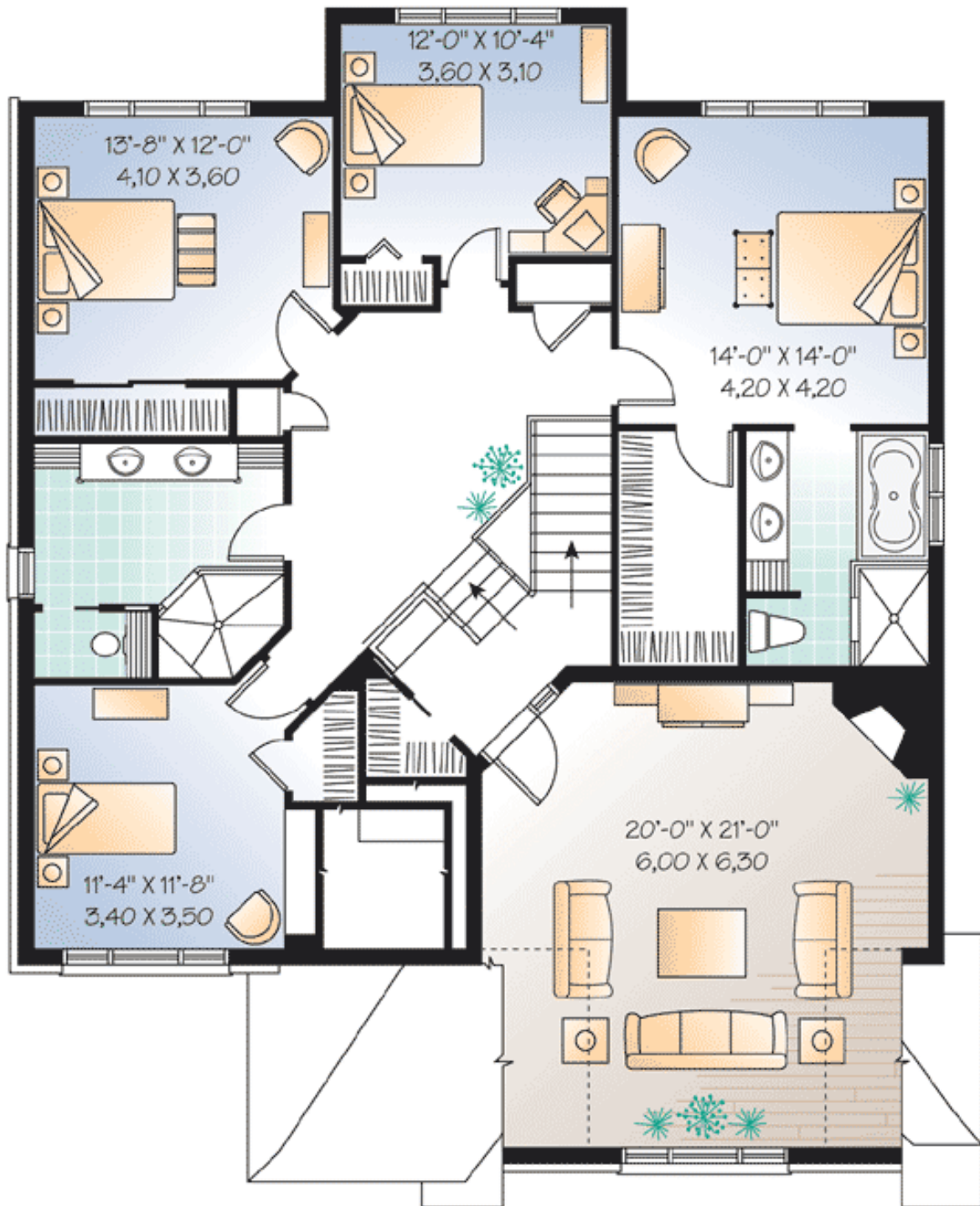
Special Features: Narrow Lot, PDF, CAD Available

One Set	Five Sets	Eight Sets	Reproducible	PDF File	CAD
\$799	\$839	\$869	\$1,049	\$1,049	\$1,765

Main Level



2nd Level



Rear View

