

Plan W36156TX: Luxury on the Right Scale



House plans are Copyright © 2009 by our architects and designers.

- A stately facade punctuated by six fireplaces and a motor court make a great impression on this luxury house plan. A grand foyer with 21' ceilings greets you as you enter from the grand 2-story covered entry. Note the 2-sided fireplace separating the living and dining rooms both with intricate 21' ceilings. A bar and butler's pantry takes you to the chef's kitchen.
- The kitchen is fully-loaded. A long island with sink, a walk-in pantry and a snack-bar counter are a few of the features you'll find. Organize the bills at the built-in desk. The kitchen opens to the breakfast room with an angled fireplace adding a touch of class.
- The family room has 13' ceilings and a fireplace with built-ins to the side. Windows let in light across the veranda and an angled door gives you access. You'll find a fireplace on the veranda, a great spot for an outdoor living room.
- The master suite shares the chimney with the veranda fireplace. You'll get lost in the huge walk-in wardrobe. A barrel vaulted bath is spa-like and a cedar closet is a nice touch. Note the door leading to the back porch.
- The study has a coffered ceiling and a fireplace of its own. An octagonal reading room makes a great retreat. Across the home, a guest suite has its own entrance off the garage.
- Upstairs features three full bedroom suites in addition to a media room, large game room with bar and balcony access plus a bonus room giving you an additional 400 sq. ft. to play with if you so desire.

Style: French Country, Luxury, Premium Collection

Total Living Area: 6178

Main Flr.: 4384

2nd Flr.: 1794

Bonus: 400 sq. ft.

Total Square Feet: 7,763 sq. ft.

Attached Garage: 4 Car, 1,185 sq. ft.

Bedrooms: 5

Full Bathrooms: 5+
Half Bathrooms: 2
Width: 102'
Depth: 102'
Maximum Ridge Height: 35'

Exterior Walls: 2x4

Ceiling Height:

Main Floor: 10'

2nd Floor: 9'

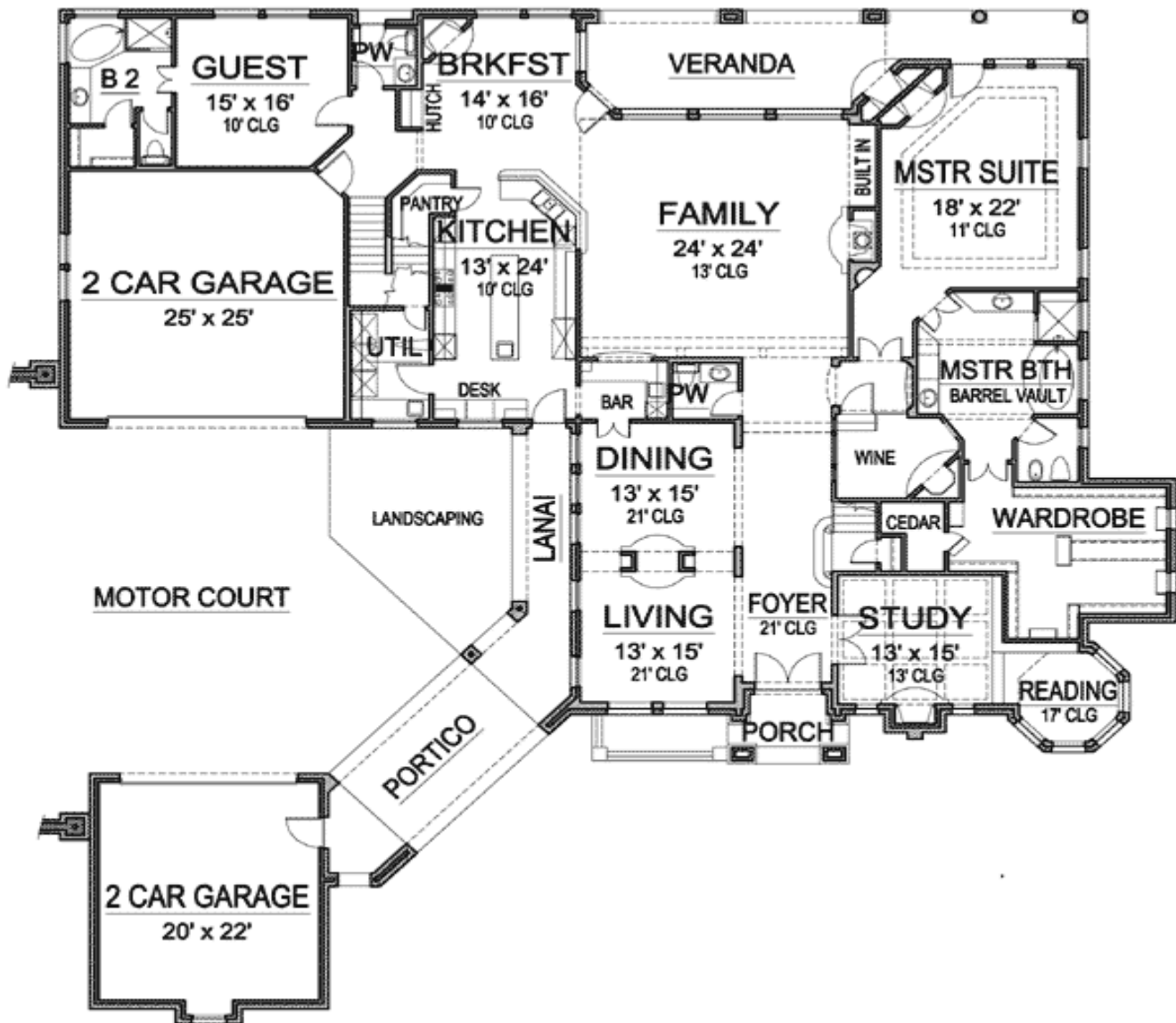
Other: 21' Foyer, Living & Dining Rooms; 13' Family; 13' Coffered Study; 11' Tray MBR; Barrel Vaulted Bath; 10' Game & Bonus

Standard Foundations: Slab

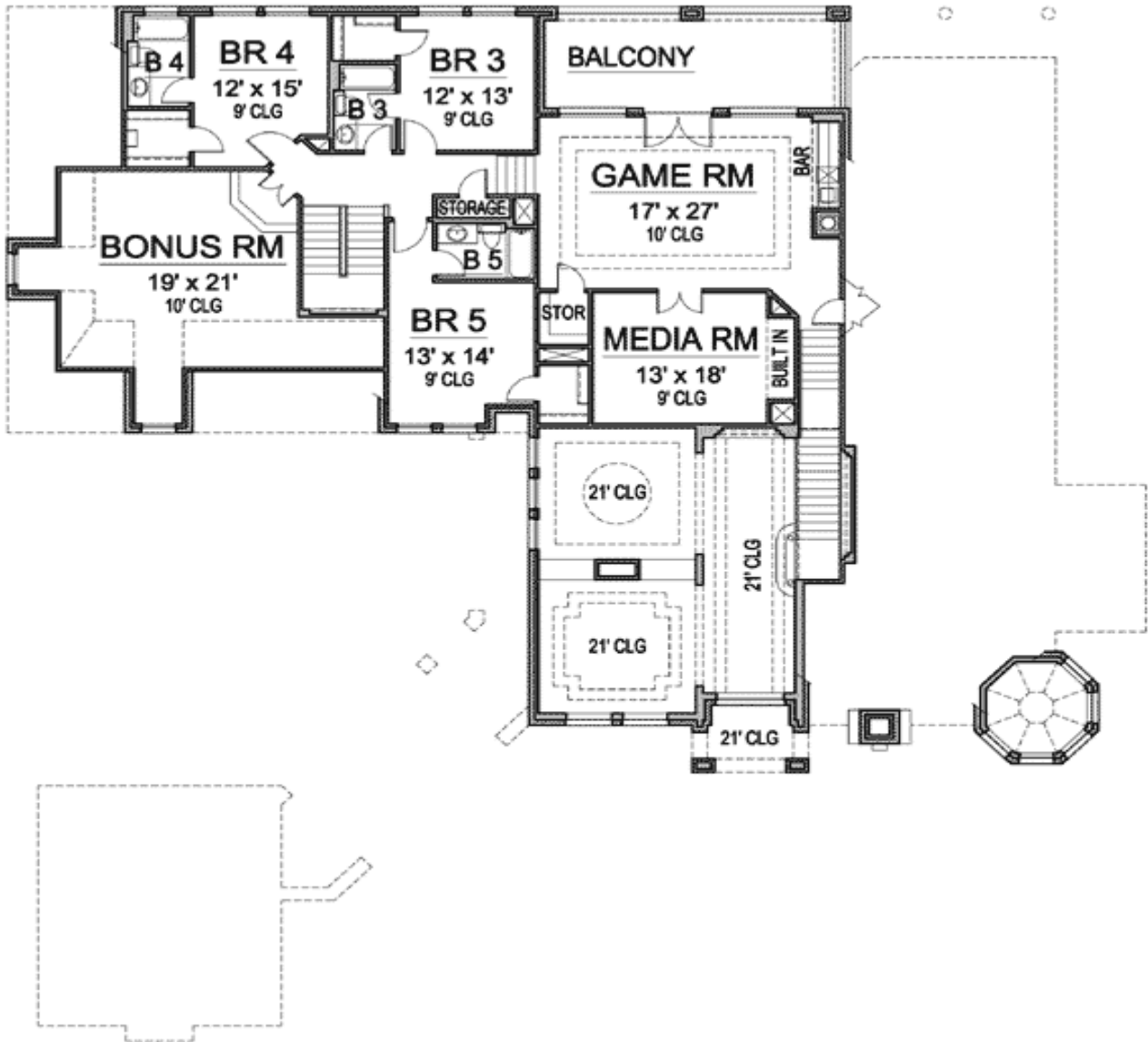
Special Features: Photo Gallery, PDF, Bonus Room, Butler Walk-in Pantry, Media-Game-Home Theater, Two Stairs to 2nd Floor, Jack & Jill Bath, CAD Available, 1st Floor Master Suite, Corner Lot, Den-Office-Library-Study

One Set	Five Sets	Reproducible	PDF File	CAD
\$1,785	\$2,616	\$2,860	\$2,860	\$4,290

Main Level



2nd Level



Architectural Designs ...selling quality house plans for over 30 years.

Photo



Architectural Designs ...selling quality house plans for over 30 years.

Photo #2



Elevation #2



Architectural Designs ...selling quality house plans for over 30 years.

Interior



Architectural Designs ...selling quality house plans for over 30 years.

Entry/Foyer



Architectural Designs :: 57 Danbury Road :: Wilton, CT 06897
USA & Canada 1-800-854-7852 or 1-877-229-2447 :: International 262-521-4596
Fax 1-203-761-8600 :: Email: info@architecturaldesigns.com

Dining Room



Master BR



Master Bath



Mstr Bath V2

