

Plan SHP35245GH: Popular Compact Design



House plans are Copyright © 2009 by our architects and designers.

- With room for 2 cars plus an office and bath on the ground floor, this carriage house plan packs a lot into its space.
- On the second floor main living level, the great room, dining area and kitchen are all open to each other, creating a spacious feeling. Double doors lead out to the covered deck.
- The master suite has its own private bath and two closets.
- Another good-sized bedroom and a hall bath complete this design.
- Related Plan: Replace the shop with an office with house plan 35361GH.

Style: Carriage, Garage, Metric

Total Living Area: 1876

Main Flr.: 1320

Lower Level: 556

Total Square Feet: 2,626 sq. ft.

Attached Garage: 2 Car, 750 sq. ft.

Bedrooms: 2

Full Bathrooms: 2

Half Bathrooms: 1

Width: 44'

Depth: 30'

Maximum Ridge Height: 27'7"

Exterior Walls: 2x6

Ceiling Height:

Main Floor: 8'

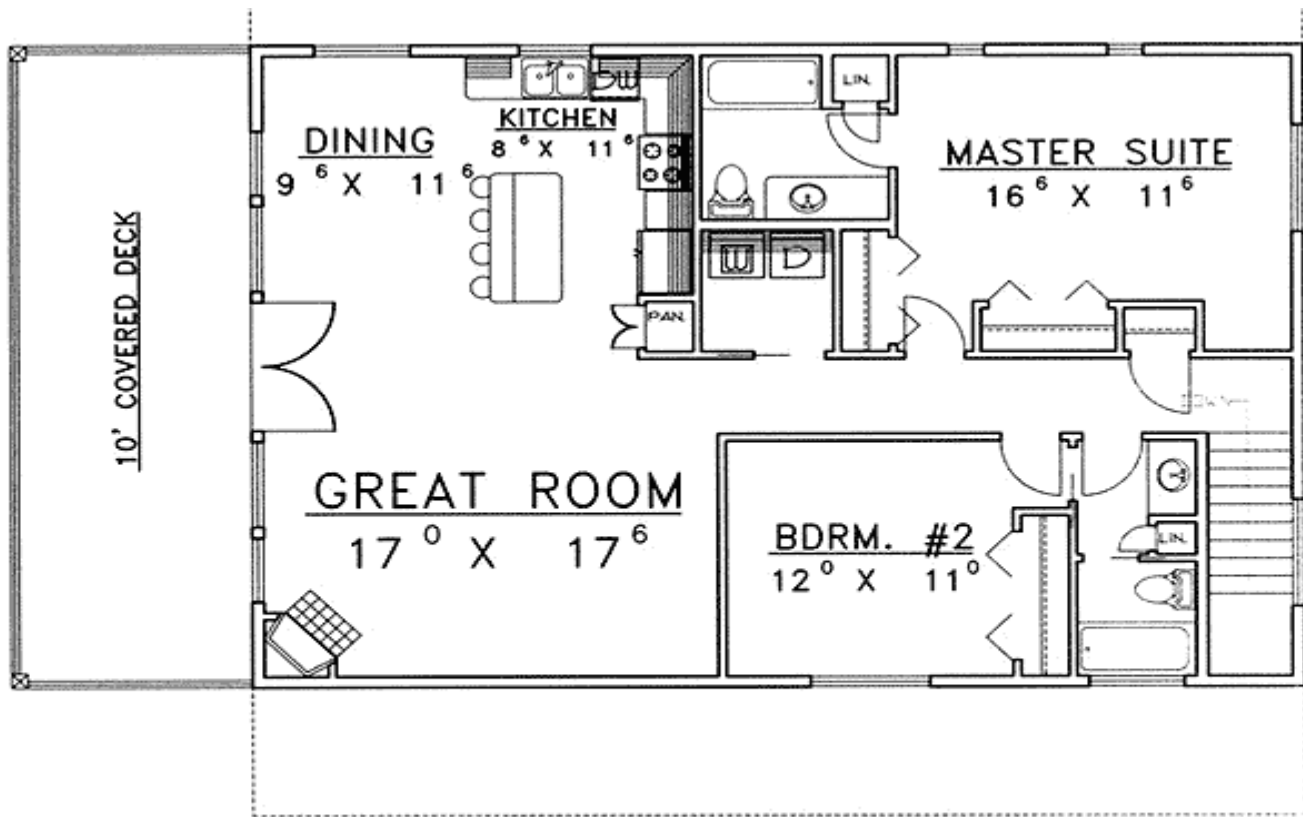
Other: 13'6" Vaulted Great Room, Dining & Kitchen

Standard Foundations: Slab

Special Features: Sloping Lot, 1st Floor Master Suite, Narrow Lot, CAD Available, PDF, Den-Office-Library-Study, Drive Under Garage

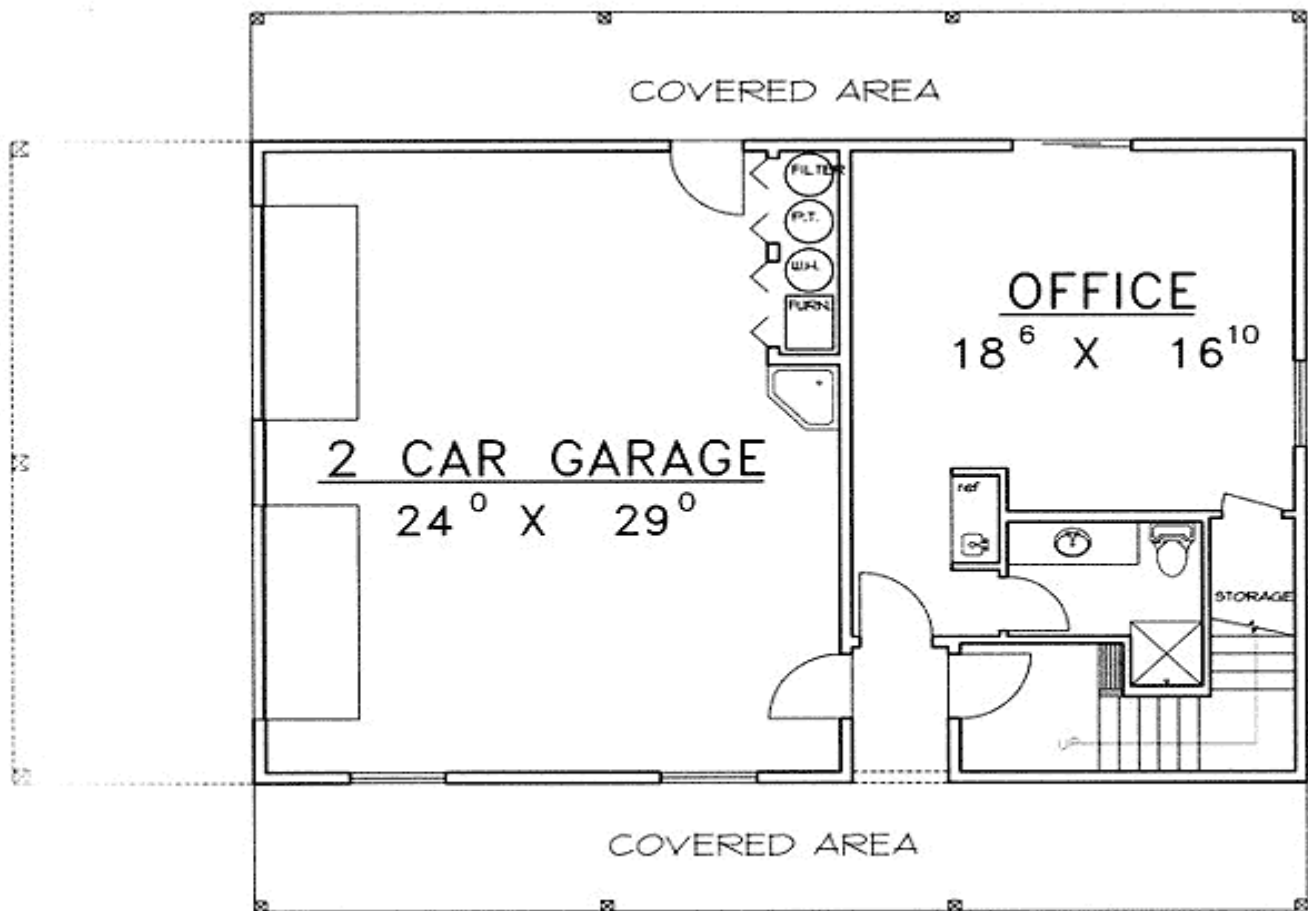
Five Sets	Eight Sets	Reproducible	PDF File	CAD
\$625	\$710	\$650	\$850	\$850

Main Level



MAIN LEVEL FLOOR PLAN

Lower Level



LOWER LEVEL FLOOR PLAN

Elevation #2



FRONT ELEVATION

Sides/Rear

