

Plan W9812SW: Ultimate Retreat



House plans are Copyright © 2009 by our architects and designers.

- This separated three bedroom vacation retreat boasts a warming gas fireplace in the great room that opens up to an inviting wrap around multi purpose deck through double French doors.
- With the entire kitchen being open to the great room it makes this a truly open and expansive versatile year round living space.
- The upstairs master bedroom has two interior functionally opening windows that overlook the great room below creating a unique look and feel to this suite. Two skylights aligned with these windows flood this area with natural warming light. A private secluded personal balcony is accessed via triple French doors for those quiet reflective moments or sunset salutes.
- Related Plan: Need a smaller home? See house plan 9801SW.

Style: Canadian, Cottage, Vacation

Total Living Area: 1370

Main Flr.: 795

2nd Flr.: 575

Porch, Combined: 72 sq. ft.

Deck: 600 sq. ft.

Balcony/Veranda: 96 sq. ft.

Total Square Feet: 2,138 sq. ft.

Bedrooms: 3

Full Bathrooms: 2

Width: 36'

Depth: 46'6"

Maximum Ridge Height: 29'

Exterior Walls: 2x6

Ceiling Height:

Main Floor: 8'

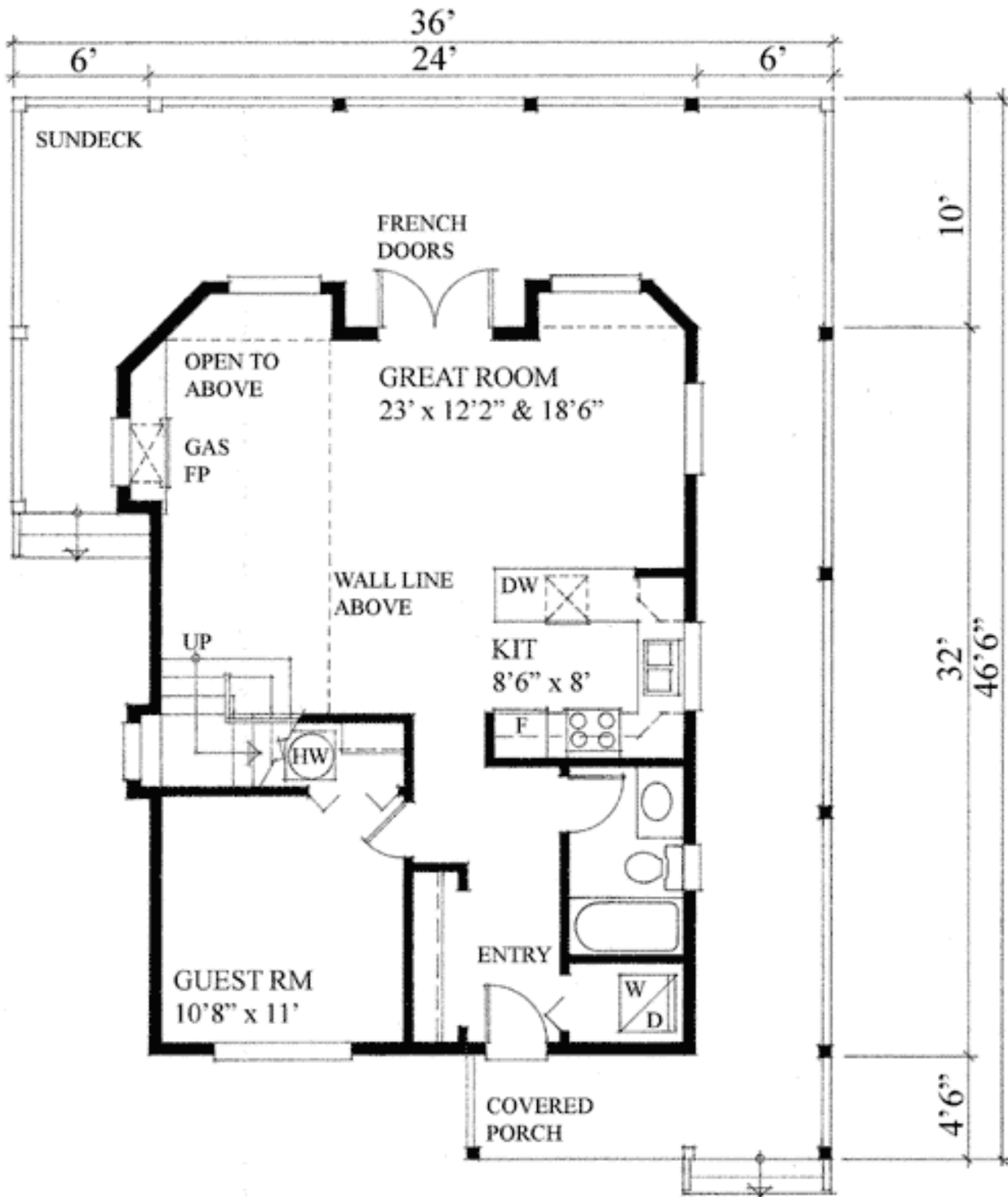
Other: Vaulted Studio Bedroom

Standard Foundations: Basement, Crawl

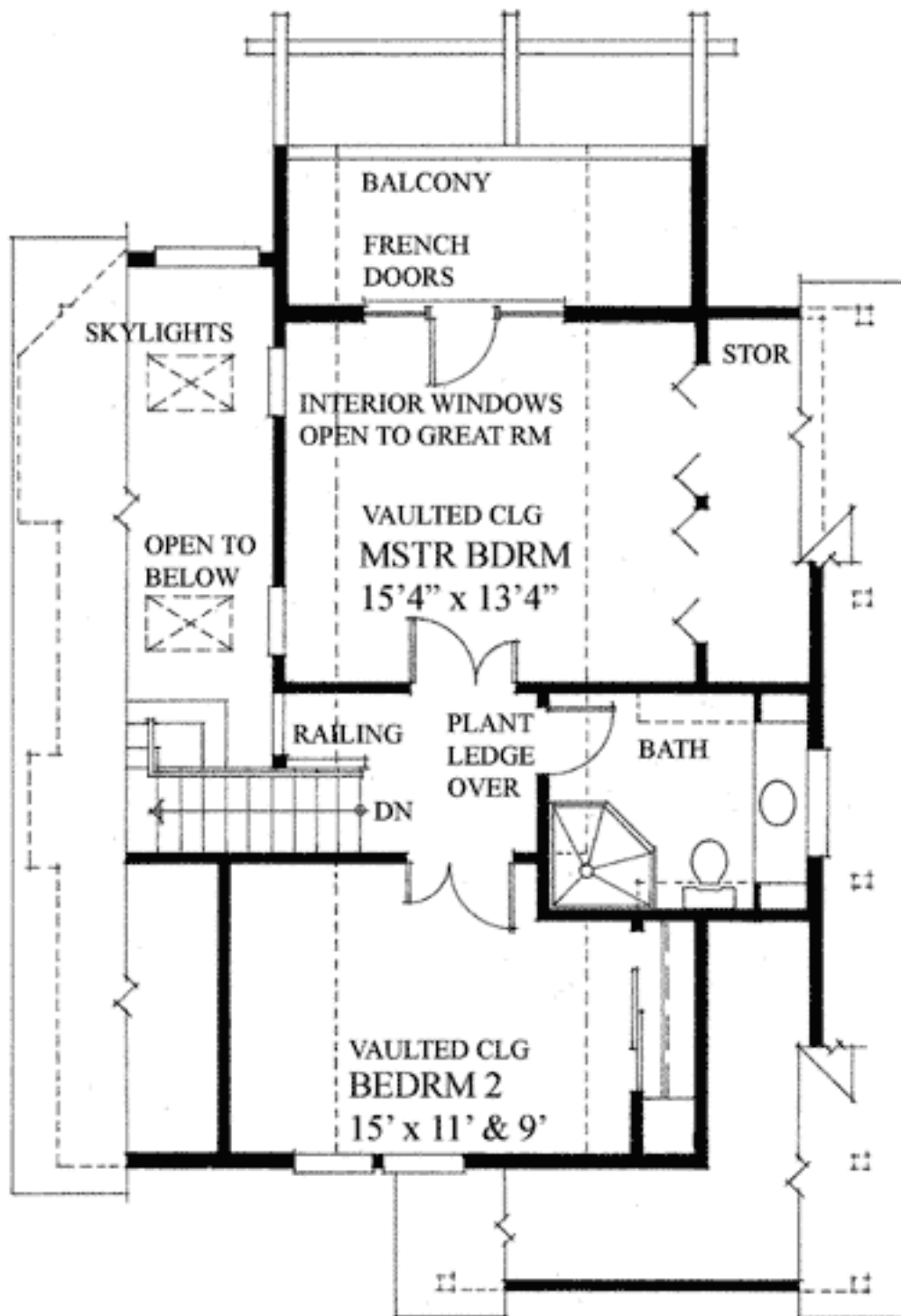
Special Features: Narrow Lot, Sloping Lot, Photo Gallery, PDF, Wrap Around Porch

One Set	Five Sets	Eight Sets	Reproducible	PDF File	CAD
\$395	\$460	\$505	\$605	\$605	\$805

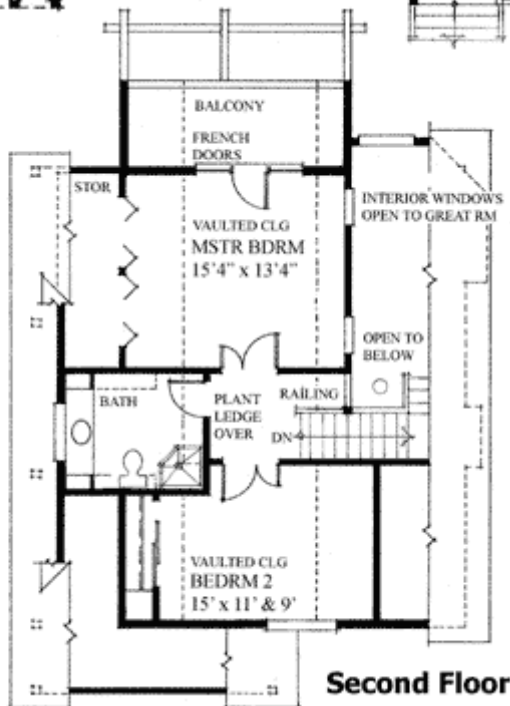
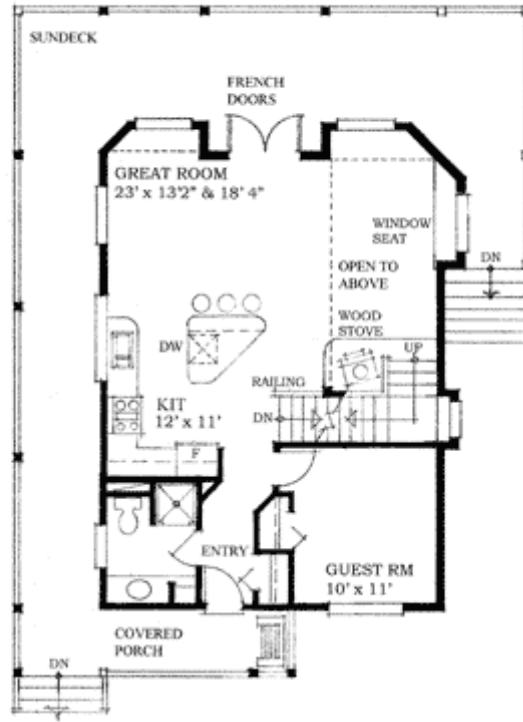
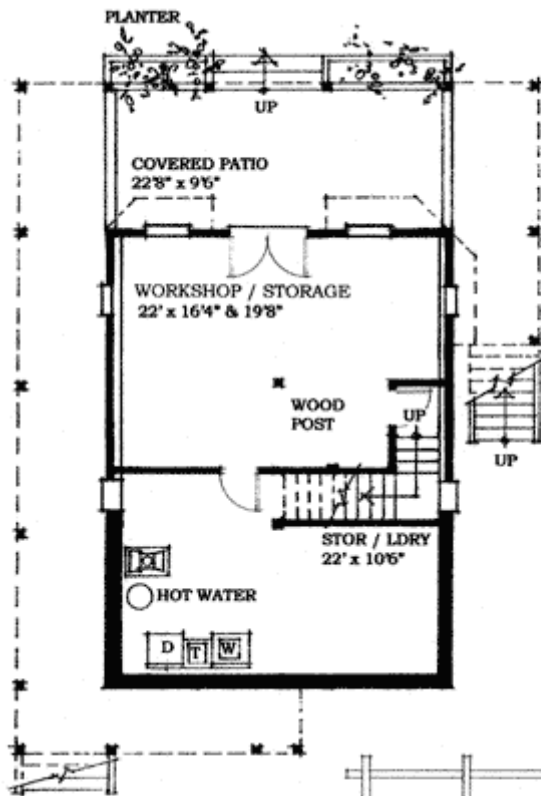
Main Level



2nd Level



Optional



Note: the basement version is in reverse layout from the crawlspace version

Photo



Photo #2



Elevation #2



Sides/Rear



Great Room



Great Rm Vw2



Great Rm Vw3



Kitchen



Master BR



Master Bath

