

Architectural Designs ...selling quality house plans for over 30 years.

Plan W63093HD: Magnificent Elevations Leads to Luxury Within



House plans are Copyright © 2009 by our architects and designers.

- The formal living and dining spaces are capped by 12 foot-high ceilings.
- The private master's wing makes den/study a perfect nursery/guest suite. The bayed sitting area in the master suite lets the sun shine in. The master bath features a huge walk-in closet and a lavish setting for the soaking tub.
- The family side of the house plan is loaded with special features and the kitchen with island and walk in pantry also has planning desk.
- Related Plans: For alternate exteriors, see house plans 6310HD, 6353HD, 63068HD, 6419HD.
- Need a larger design? See house plan 6357HD and 6485HD (3,183 sq. ft).

Style: Traditional

Total Living Area: 2660

Main Flr.: 2660

Covered Patio: 465 sq. ft.

Entry: 92 sq. ft.

Total Square Feet: 3,744 sq. ft.

Attached Garage: 2 Car, 527 sq. ft.

Bedrooms: 4

Full Bathrooms: 3

Width: 66'4"

Depth: 74'4"

Maximum Ridge Height: 25'

Exterior Walls: 2x4

Ceiling Height:

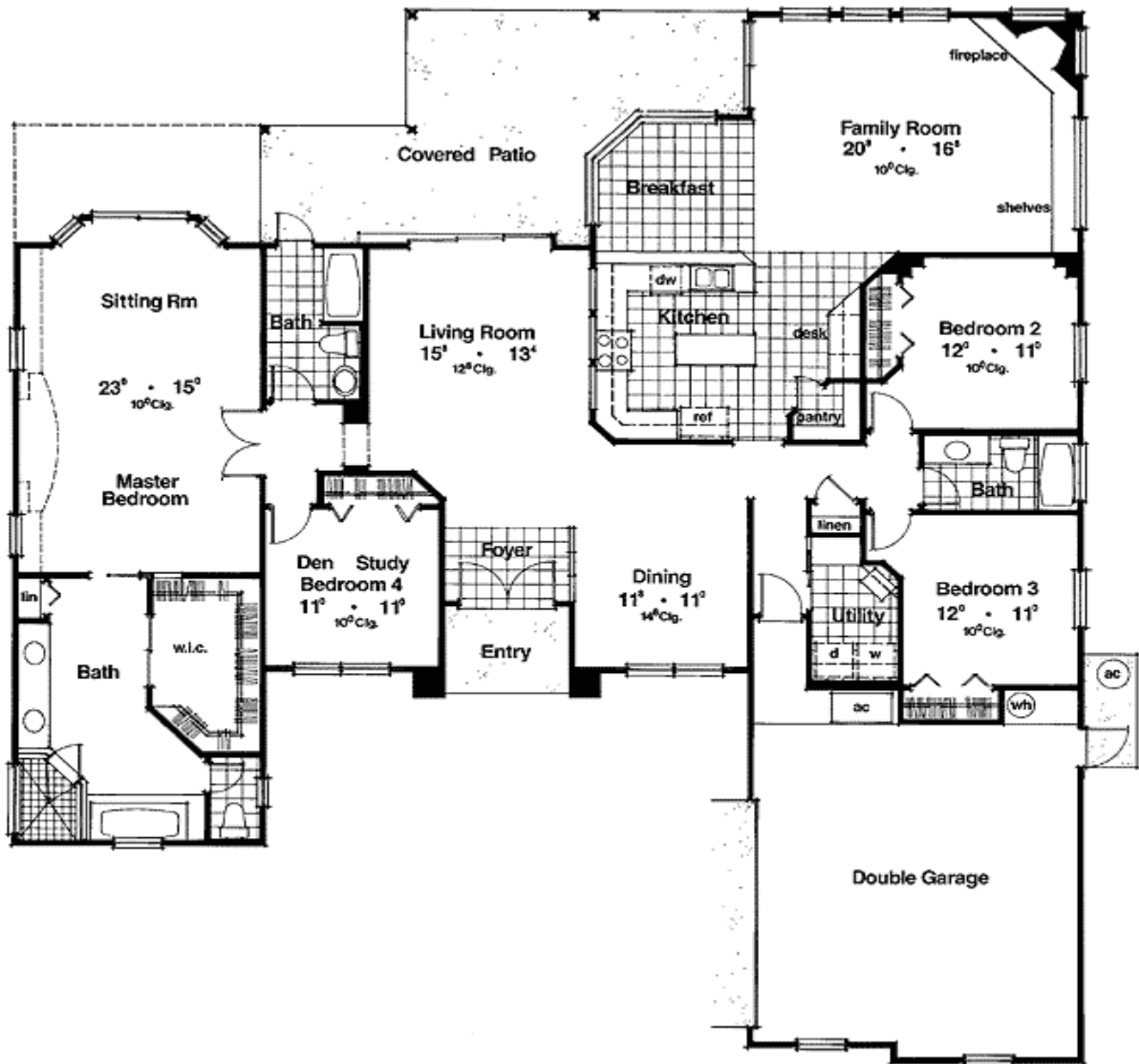
Standard Foundations: Slab

Alternate Foundations: Basement (\$675), Crawl (\$675)

Special Features: PDF, CAD Available, 1st Floor Master Suite, Photo Gallery

One Set	Five Sets	Eight Sets	Reproducible	PDF File	CAD
\$650	\$700	\$740	\$850	\$850	\$1,700

Main Level



Living Room



Dining Room



Kitchen



Master Bath

