

Plan W0026C: Open Interior



House plans are Copyright © 2009 by our architects and designers.

- An open floor plan is the hallmark of this Colonial design.
- The two-story entrance foyer leads to all the principal areas on the first floor. Formal living and dining rooms flank the foyer, and arched doorways are found throughout the first floor.
- The roomy U-shaped kitchen includes a central cooktop island, a peninsula counter and a laundry closet.
- The open staircase takes you upstairs, where the master suite contains both a linear and a walk-in closet and a bath with twin sinks, separate shower and whirlpool tub. The other bedrooms share the second full bath.
- Foundation: basement.
- Related Plan: See house plan 0062C for a version with a large arched window atop the front door.

Style: Colonial, Traditional

Total Living Area: 2397

Main Flr.: 1282

2nd Flr.: 1115

Basement Unfinished: 1,282 sq. ft.

Total Square Feet: 4,197 sq. ft.

Attached Garage: 2 Car, 518 sq. ft.

Bedrooms: 4

Full Bathrooms: 2

Half Bathrooms: 1

Width: 63'

Depth: 37'6"

Maximum Ridge Height: 30'6"

Exterior Walls: 2x4

Ceiling Height:

Standard Foundations: Basement

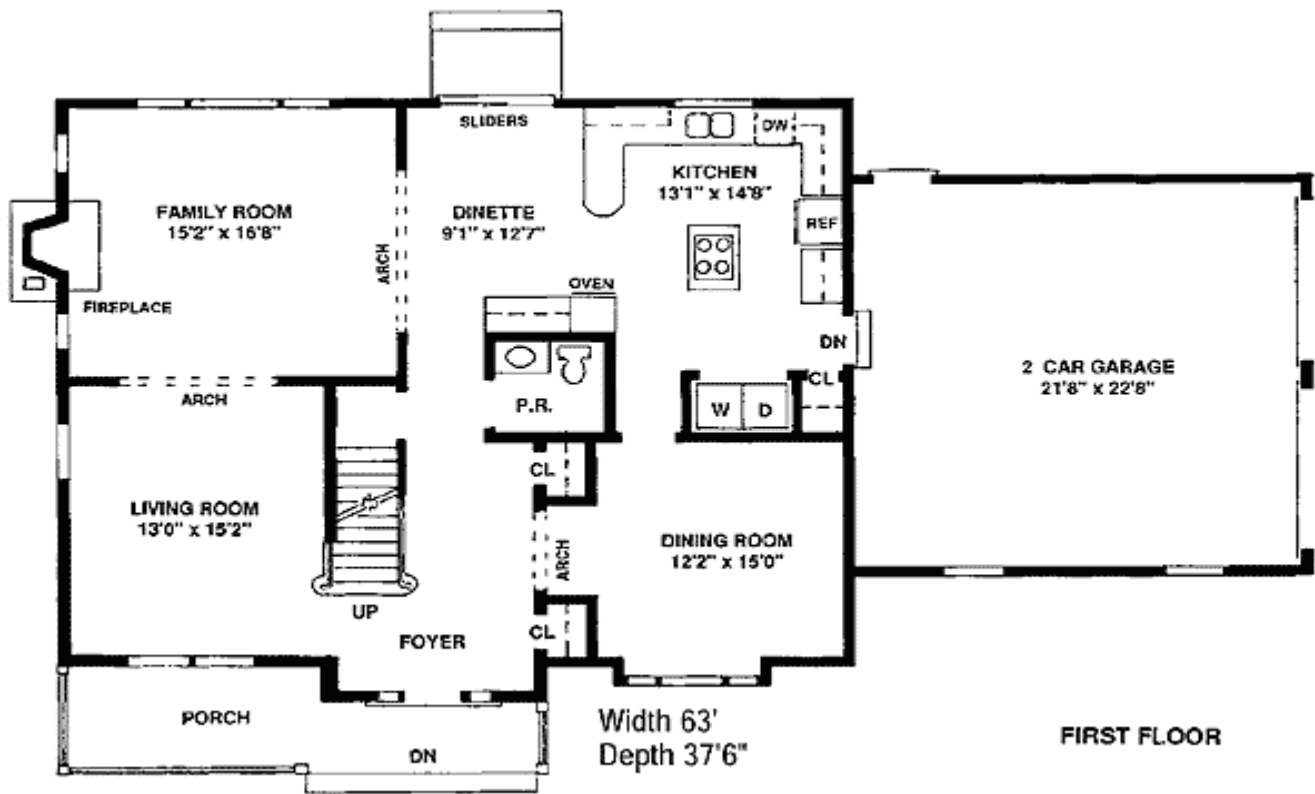
One Set
\$485

Five Sets
\$545

Eight Sets
\$590

Reproducible
\$710

Main Level



2nd Level

