

# Architectural Designs ...selling quality house plans for over 30 years.

Plan W9814SW: Vacation Cottage or Carriage House



House plans are Copyright © 2009 by our architects and designers.

- A combination of low maintenance shingle siding with fish scale accents, covered porches and old fashioned window treatments create a strong appeal this side-entry design. With two floor plan options - one as a one bedroom vacation getaway and another as a garage with bath and upstairs studio - make this an attractive plan.
- Ample storage, a large workshop space and a full bathroom for those cleanups occupy the first level.
- Through the vaulted foyer you access the second level. A separating glass railing makes this area more visually spacious and inviting. Numerous activities can be accommodated in this multi-purpose space.
- Storage and a private viewing balcony complete this unique design.
- Note Please allow two weeks for delivery of great room version.

Style: Canadian, Cottage, Garage, Vacation

Total Living Area: 476

Main Flr.: 182

2nd Flr.: 294

Porch, Combined: 126 sq. ft.

Balcony/Veranda: 48 sq. ft.

Total Square Feet: 1,316 sq. ft.

Detached Garage: 2 Car, 666 sq. ft.

Bedrooms: None

Full Bathrooms: 1

Width: 35'6"

Depth: 31'

Maximum Ridge Height: 25'

Exterior Walls: 2x6

Ceiling Height:

Main Floor: 8'

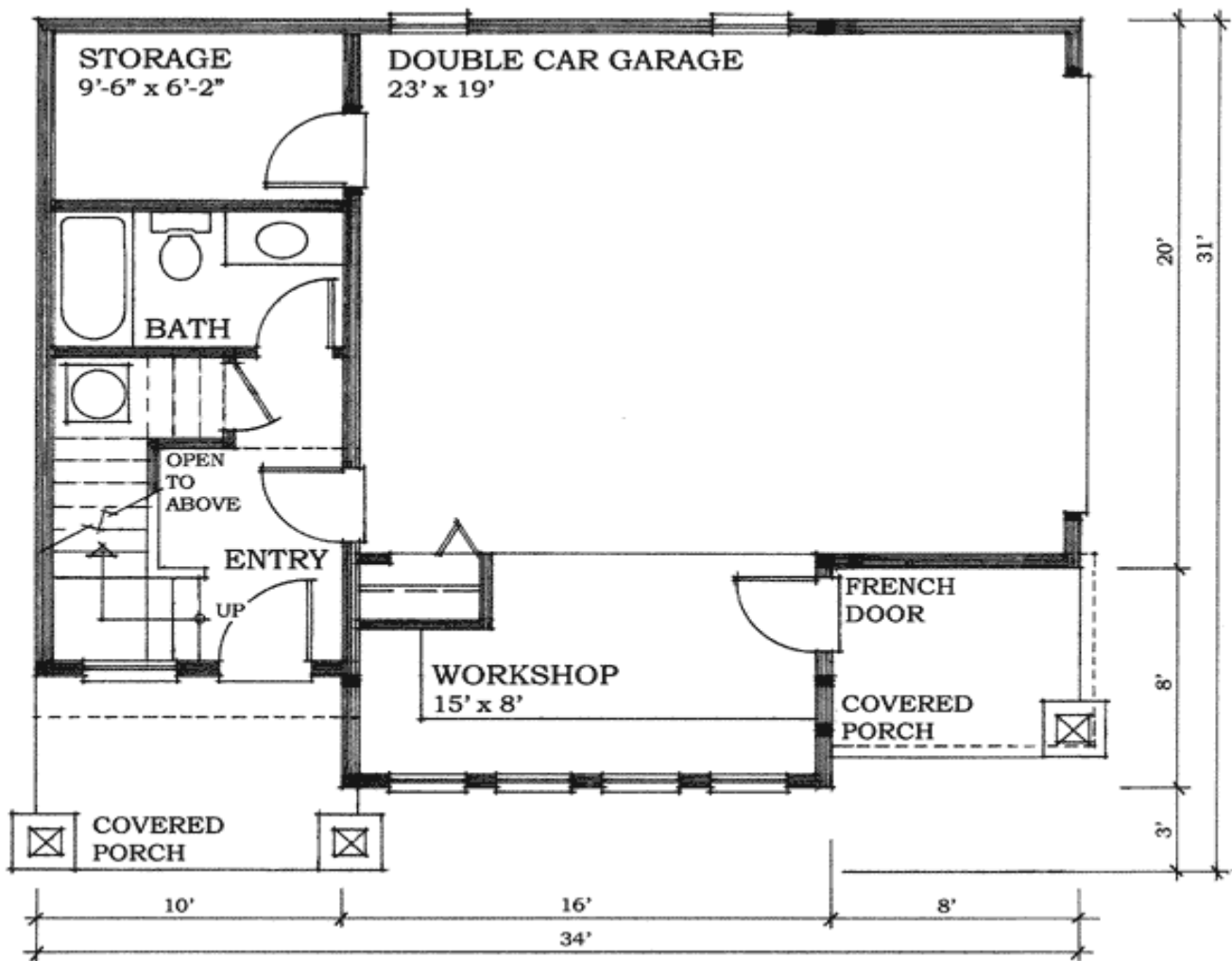
Other: 8'-4" Sloped 2nd Floor

Standard Foundations: Slab

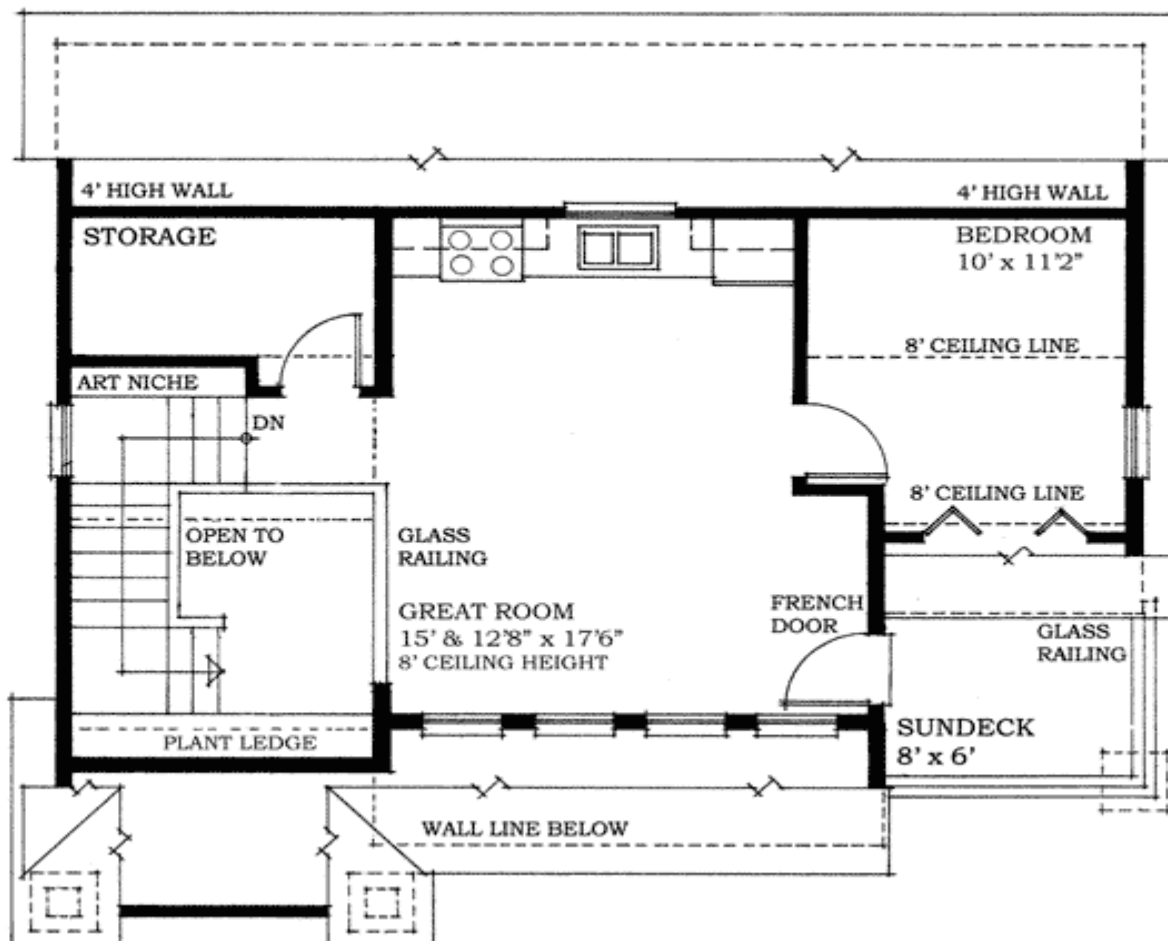
Special Features: PDF

One Set	Five Sets	Eight Sets	Reproducible	PDF File	CAD
\$395	\$460	\$505	\$605	\$605	\$805

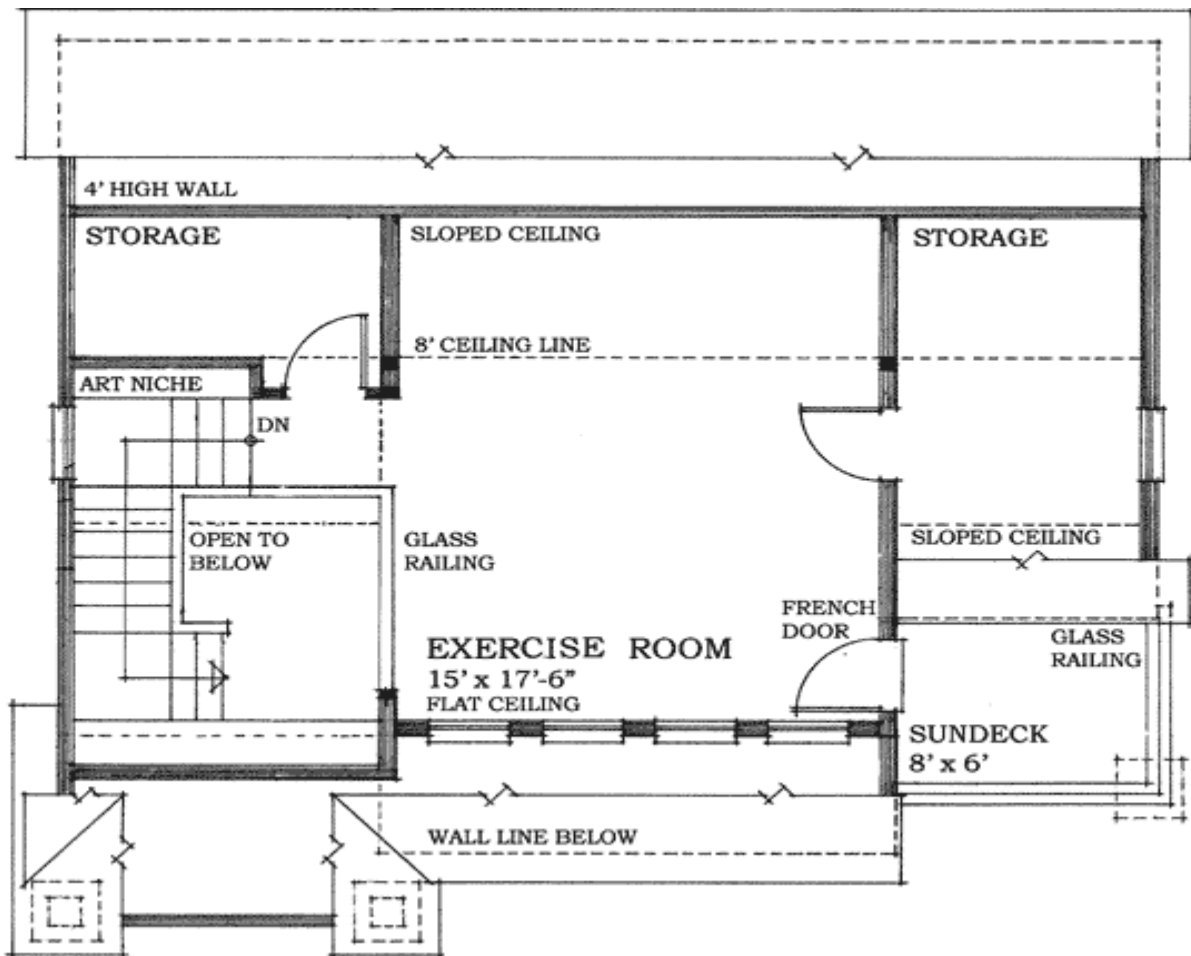
## Main Level



## 2nd Level



Optional



Elevation #2



Front elevation

Sides/Rear



Rear elevation



Left elevation



Right elevation