

Architectural Designs ...selling quality house plans for over 30 years.

Plan W13136FL: Classic Coastal Design



House plans are Copyright © 2009 by our architects and designers.

- Narrow lots are no problem for this classic coastal design, featuring traditional seaside touches with smart, contemporary updates.
- A first floor master suite with its own deck, two bedrooms and a rec room are on the first floor. Take the elevator up to more living spaces above.
- Three more bedrooms and a master suite are on the second floor. The master suite has direct access to a covered deck and an open deck. Four baths are also on this floor.
- Entertain on the third floor with an open dining room and great room combination. A powder room of the stairwell is there for guests and the master suite with deck access and master bath round out this floor.
- A tower is accessible by stairs from the third view offering ocean views and provides a great place to watch the sun rise or set.
- For a five bedroom version of this house plan, see 13018FL.

Style: Beach, Florida, Shingle Style

Total Living Area: 4425

Main Flr.: 1371

2nd Flr.: 1440

Lower Level: 1545

Tower:

Total Square Feet: 4,425 sq. ft.

Bedrooms: 8

Full Bathrooms: 5+

Half Bathrooms: 2

Width: 36'

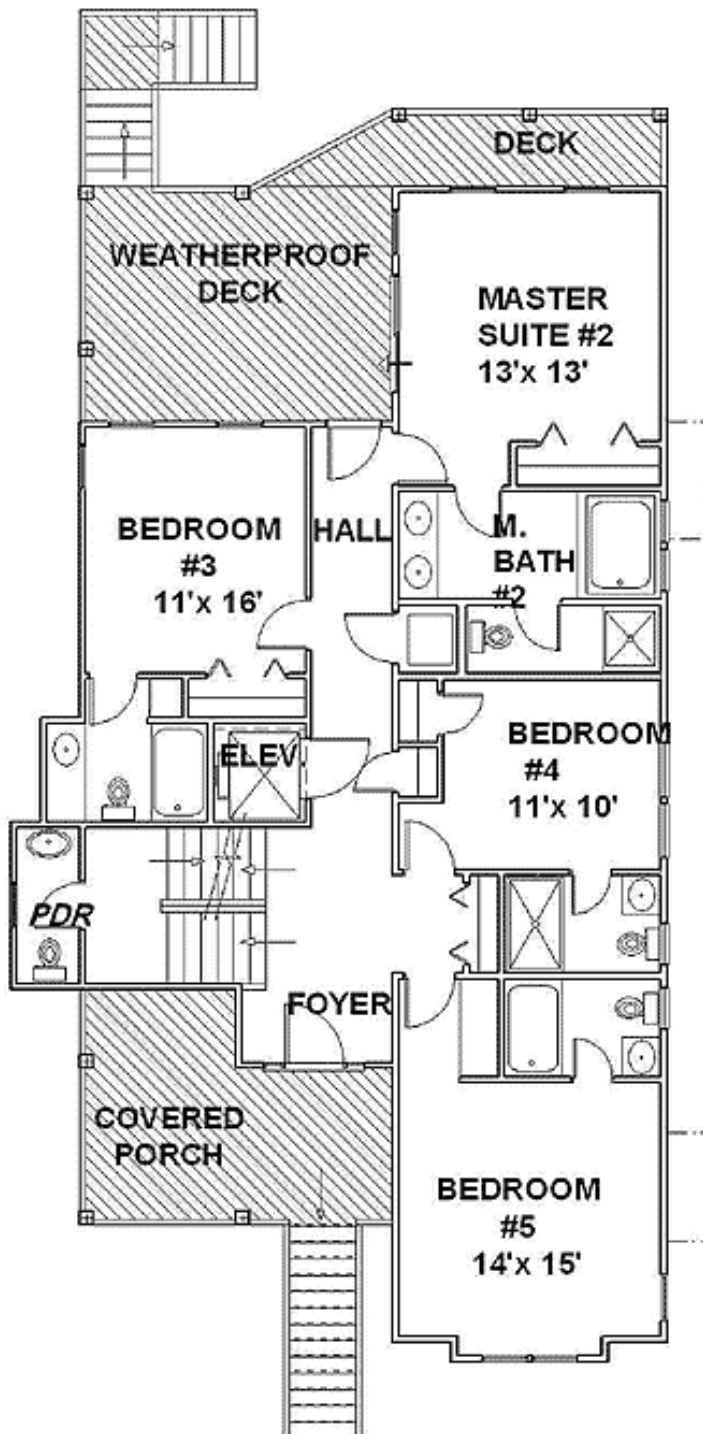
Depth: 64'

Maximum Ridge Height: 38'

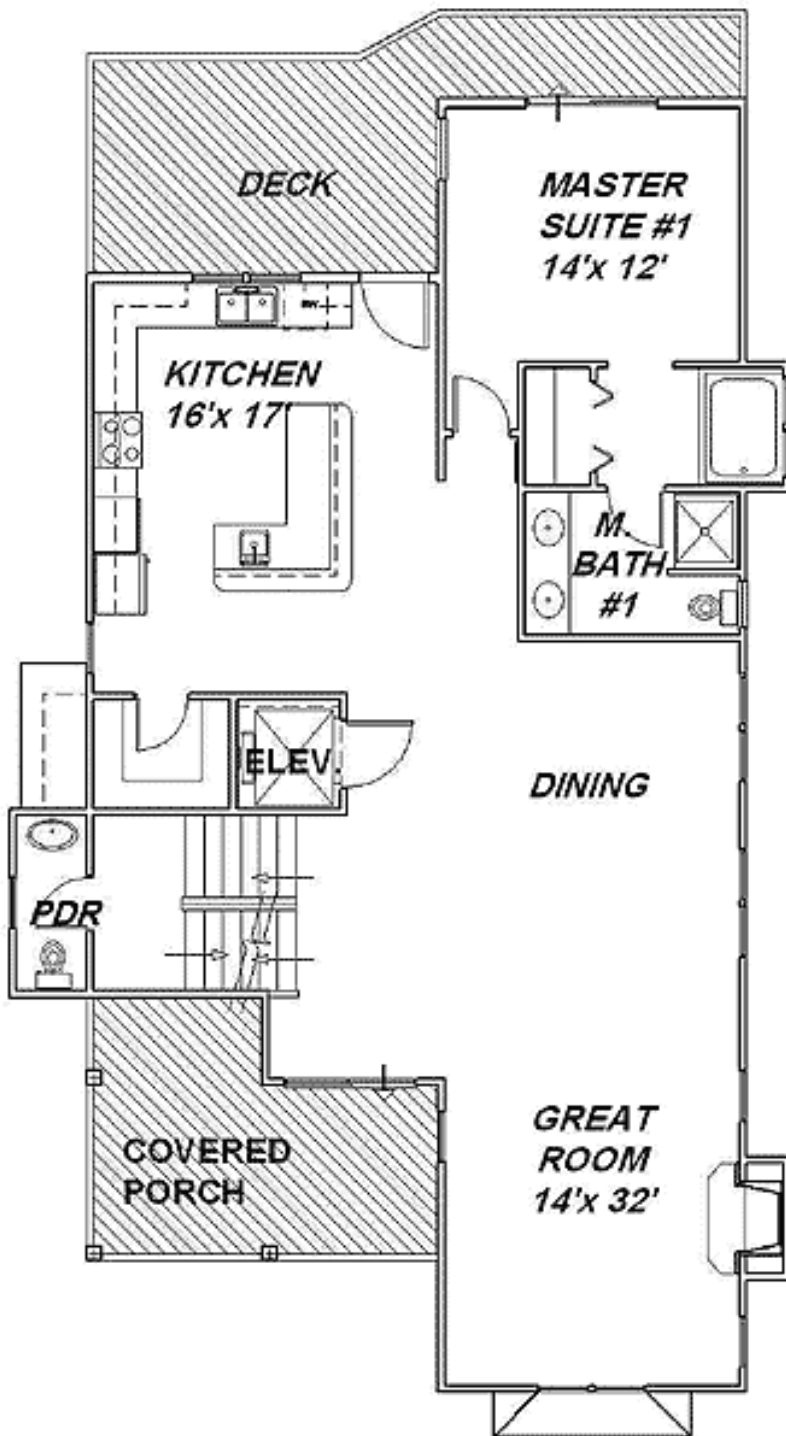
Exterior Walls: 2x4
Ceiling Height:
Standard Foundations: Piling
Special Features: PDF, Narrow Lot, Photo Gallery, CAD Available

Reproducible	PDF File	CAD
\$3,024	\$3,024	\$4,024

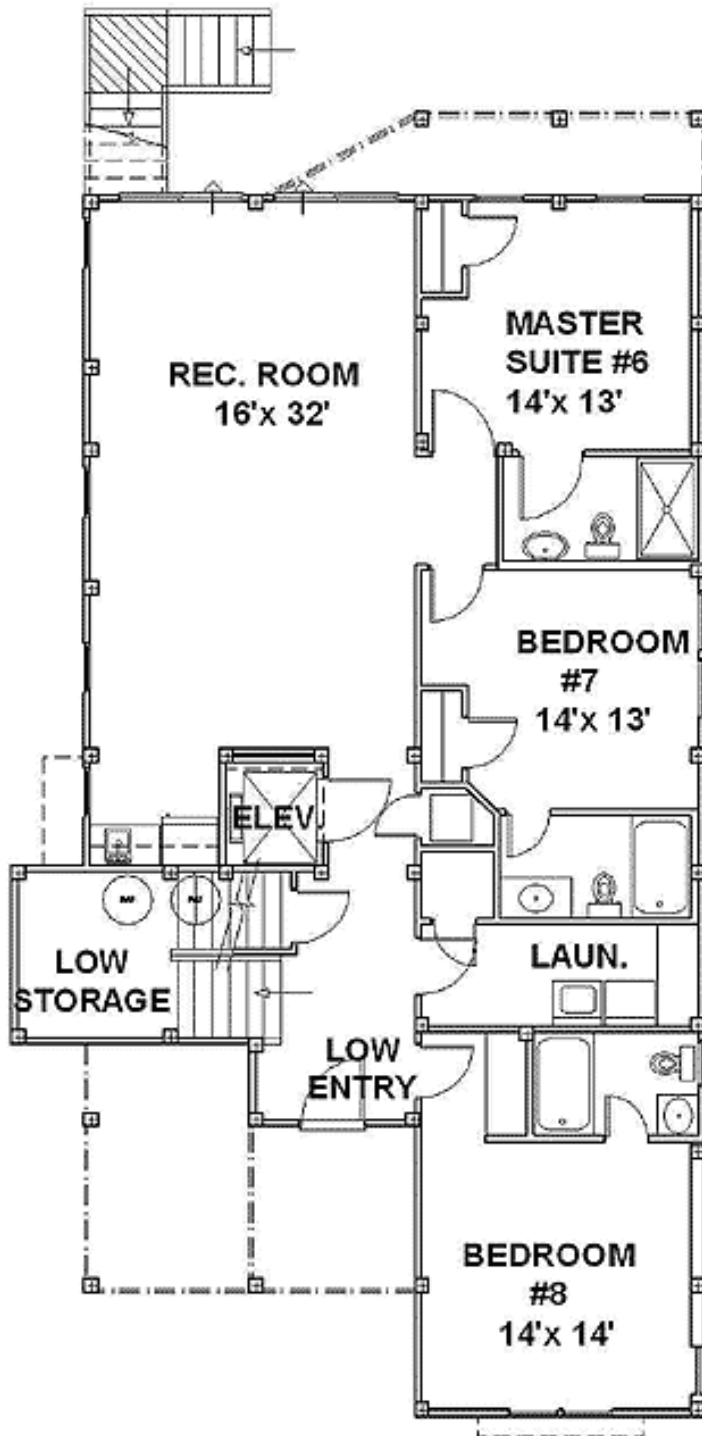
Main Level



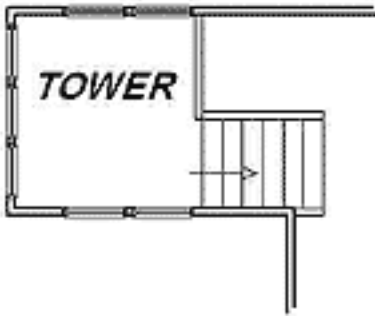
2nd Level



Lower Level



Other



Architectural Designs ...selling quality house plans for over 30 years.

Photo



Elevation #2

