

# Architectural Designs ...selling quality house plans for over 30 years.

Plan W5933ND: Open Living



House plans are Copyright © 2009 by our architects and designers.

- The foyer, dining room and great room of this elegant open design are united by a 10' ceiling.
- A wood-burning fireplace in the great room complements the gas fireplace in the hearth room, which forms a family area with the kitchen and the breakfast room. A computer center, laundry room and walk-in pantry are special features.
- Bedroom two, which has its own bath, could easily become a study with an optional door to the foyer. Another full bath serves the other bedrooms and the rest of the house.
- The spacious master bath is filled with luxury. In the master bedroom, the bayed sitting area offers an invitation to curl up with a book.
- The upstairs bonus room can serve any number of purposes.
- Related Plans: See these related house plans: 59712ND with in-law suite and Jack-and-Jill bath configuration and 59679ND with an in-law suite.

Style: Traditional

Total Living Area: 2405

Main Flr.: 2405

Bonus: 358 sq. ft.

Front Porch: 108 sq. ft.

Rear Porch: 285 sq. ft.

Total Square Feet: 3,918 sq. ft.

Attached Garage: 3 Car, 762 sq. ft.

Bedrooms: 4, 3

Full Bathrooms: 3

Width: 66'4"

Depth: 67'2"

Maximum Ridge Height: 30'

Exterior Walls: 2x4

Ceiling Height:

Main Floor: 9'

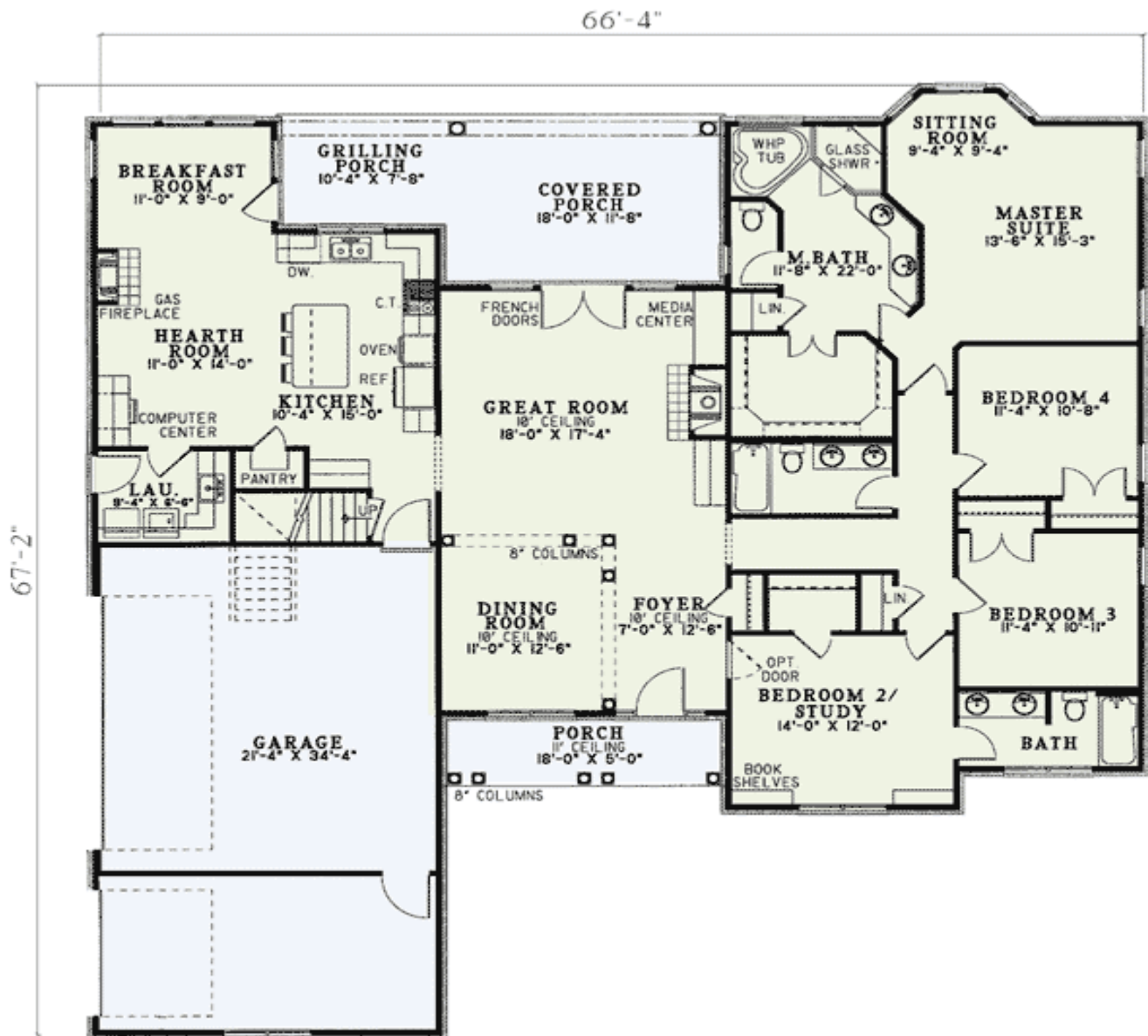
Standard Foundations: Slab, Crawl

Alternate Foundations: Walkout (\$250), Basement (\$250)

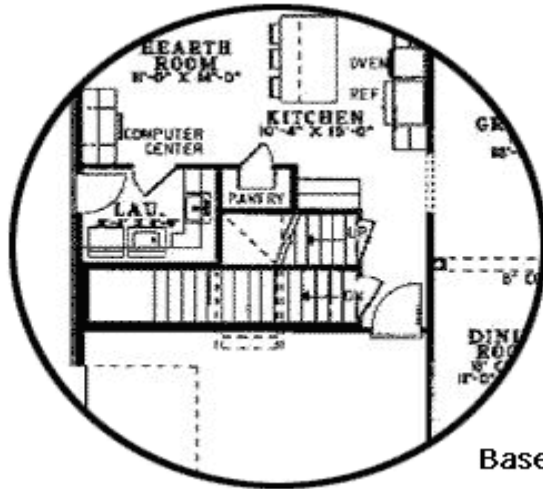
Special Features: Bonus Room, 1st Floor Master Suite, PDF, CAD Available, Corner Lot, Den-Office-Library-Study, MBR Sitting Area

One Set	Five Sets	Eight Sets	Reproducible	PDF File	CAD
\$635	\$750	\$805	\$1,060	\$1,060	\$1,800

## Main Level

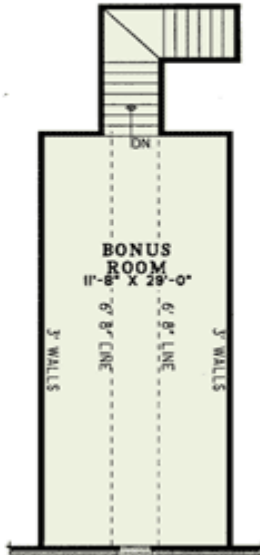


Optional

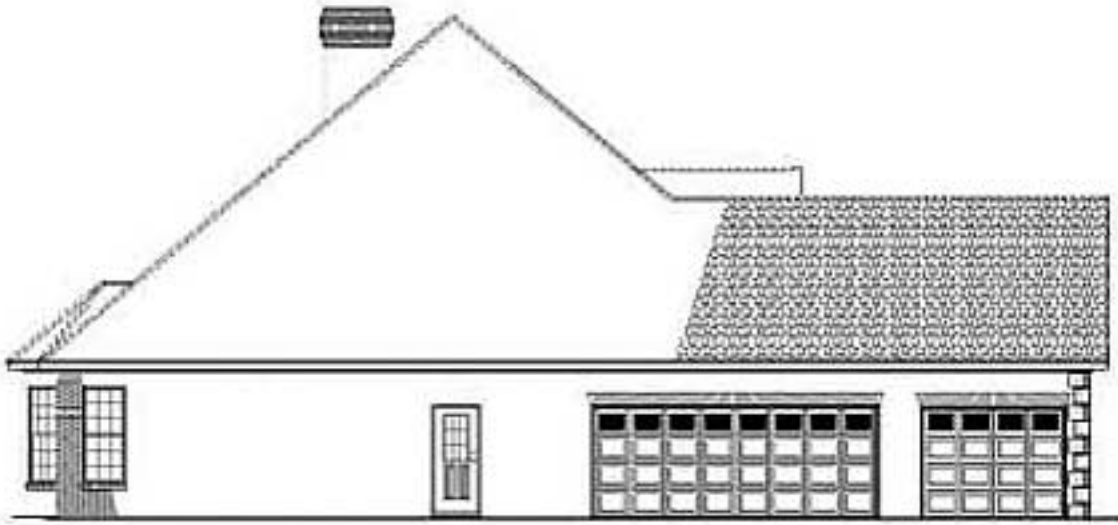


Basement stair location

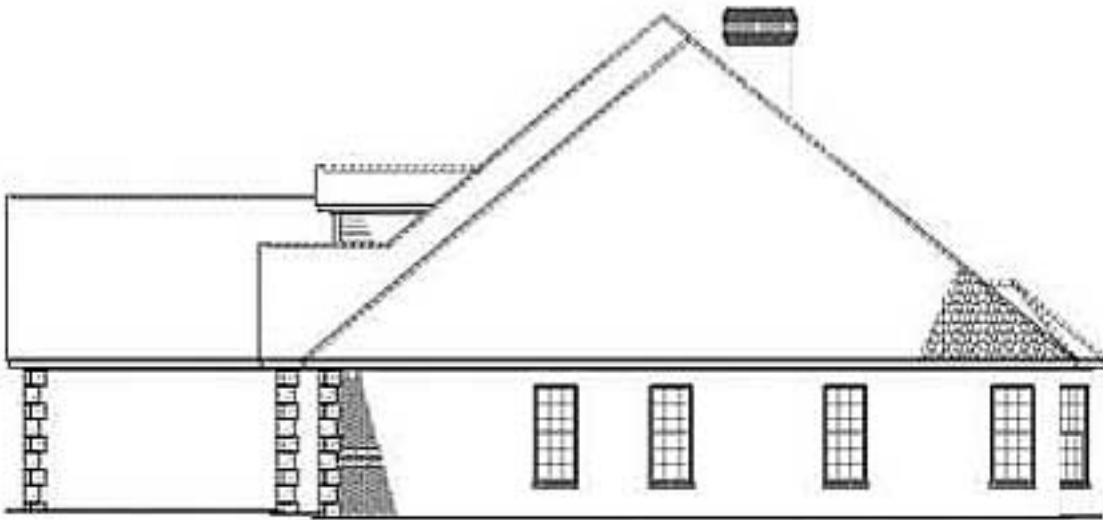
## Bonus



Left Side



Right Side



Rear View

