

Plan W59043ND: Rustic Simplicity



House plans are Copyright © 2009 by our architects and designers.

- A deck adjoins the covered porches of this rustic log home plan. The Great room with fireplace fills with light from above with a vaulted ceiling.
- The master suite with ample closet space provides access to the covered porch and master bath with walk-in closet and double vanities. bedrooms two and three with ample closet space are also located on the main level.
- Down the hall, the dining room accesses a covered porch and linen closet.
- The large breakfast nook with access to a covered porch opens to the kitchen with island range. From there is the laundry room with access to the screened breezeway to the garage.
- A loft covers the upper level of this home plan.
- Ceilings: 8' standard.
- Foundation: Basement, crawl space, daylight basement. Please specify your preference when ordering.

Style: Log, Mountain

Total Living Area: 2660

Main Flr.: 2360

2nd Flr.: 300

Front Porch: 457 sq. ft.

Rear Porch: 76 sq. ft.

Deck: 440 sq. ft.

Total Square Feet: 4,473 sq. ft.

Attached Garage: 2 Car, 840 sq. ft.

Bedrooms: 3

Full Bathrooms: 2

Half Bathrooms: 1

Width: 103'10"

Depth: 68'2"

Exterior Walls: Log

Ceiling Height:

 Main Floor: 8'

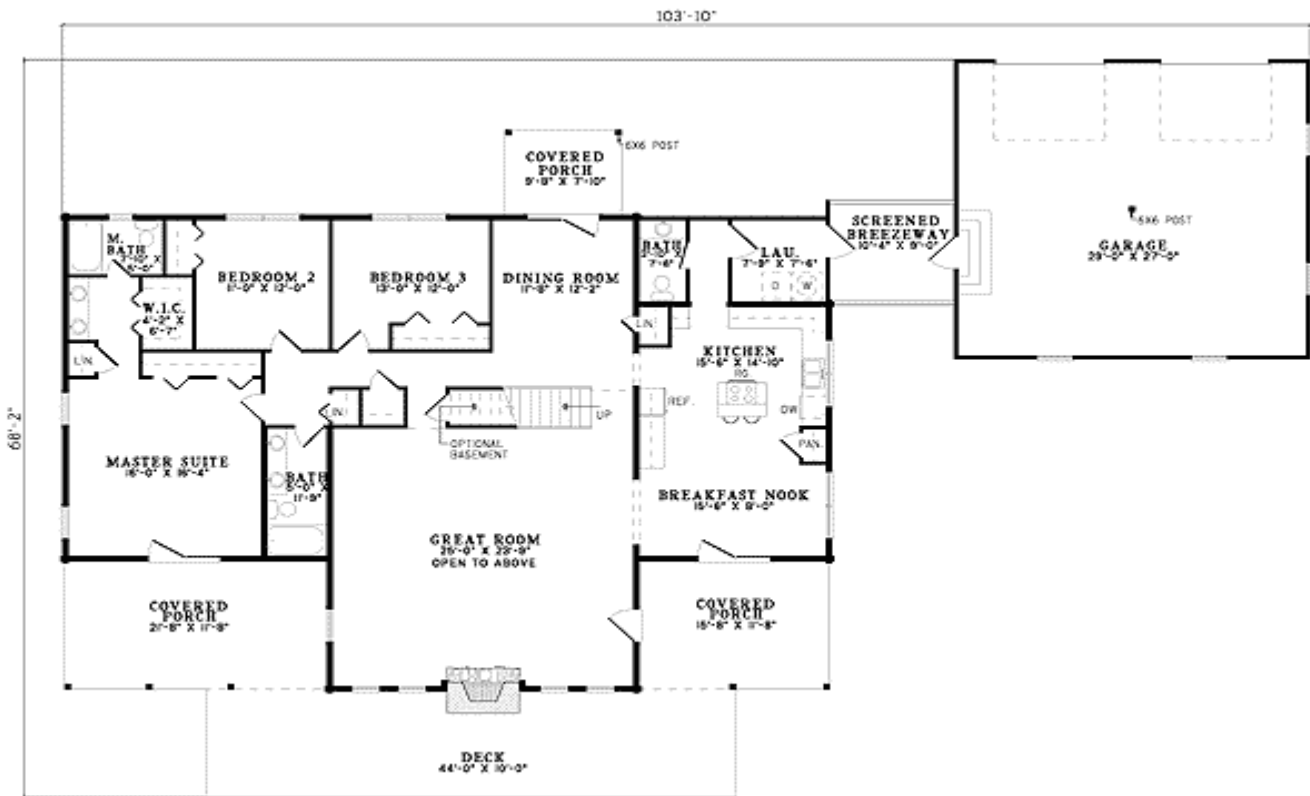
Standard Foundations: Crawl

Alternate Foundations: Walkout (\$250), Basement (\$250)

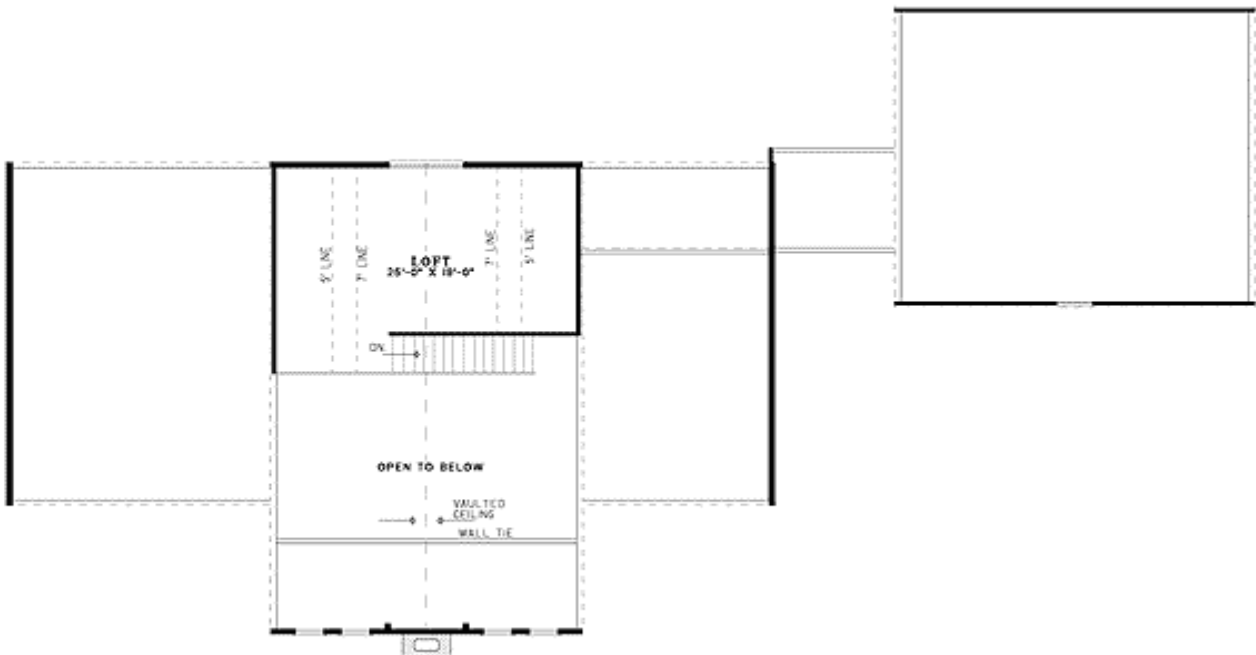
Special Features: PDF, 1st Floor Master Suite

One Set	Five Sets	Eight Sets	Reproducible	PDF File	CAD
\$605	\$710	\$750	\$970	\$970	\$1,650

Main Level



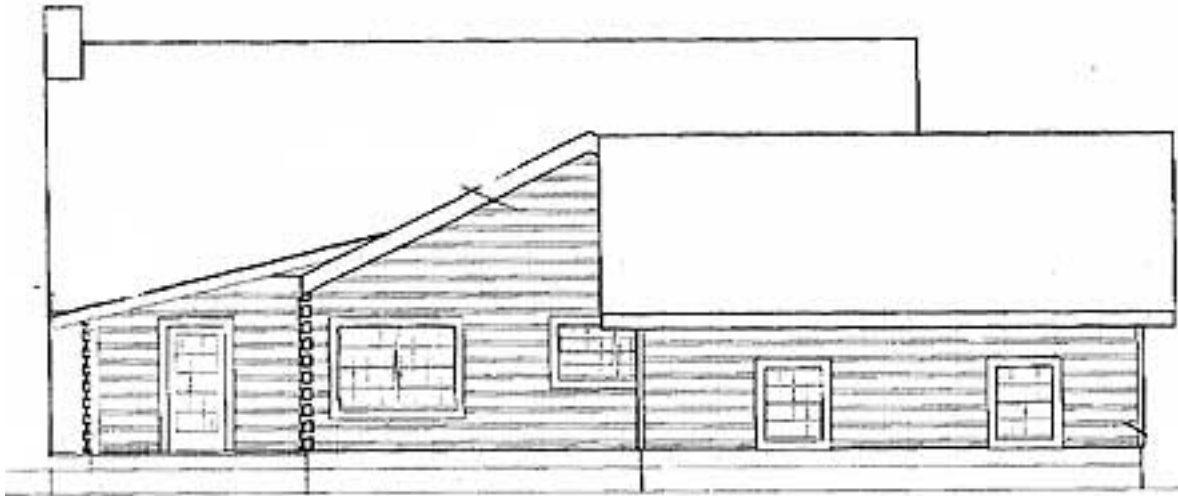
2nd Level



Left Side



Right Side



RIGHT ELEVATION