

Architectural Designs ...selling quality house plans for over 30 years.

Plan W21218DR: Porches Front and Back



House plans are Copyright © 2009 by our architects and designers.

- With porches in front and back, this farmhouse plan displays a pleasant face and comes in two layouts and with front and side entry garage versions.
- A fireplace bordered by built-ins warms the open living area, consisting of a living room, a dining room and a kitchen with a snack-bar island. Also featured on the first floor is a full bath and an large laundry/utility room.
- Upstairs, the master suite includes a walk-in closet and a two-compartment bath. The laundry room is conveniently placed off the second full bath, which serves the family bedrooms.
- Bonus space over the front-facing garage allows for future expansion.
- Related Plans: Need a home office? See house plan 21097DR (two-car side-entry garage) and 21217DR.

Style: Canadian, European, Farmhouse, Metric

Total Living Area: 1875

Main Flr.: 908

2nd Flr.: 967

Basement Unfinished: 908 sq. ft.

Bonus: 213 sq. ft.

Front Porch: 128 sq. ft.

Deck: 58 sq. ft.

Total Square Feet: 3,471 sq. ft.

Attached Garage: 1 Car, 289 sq. ft.

Bedrooms: 3

Full Bathrooms: 2

Width: 36'

Depth: 40'

Maximum Ridge Height: 31'10"

Exterior Walls: 2x6

Ceiling Height:

Main Floor: 8'

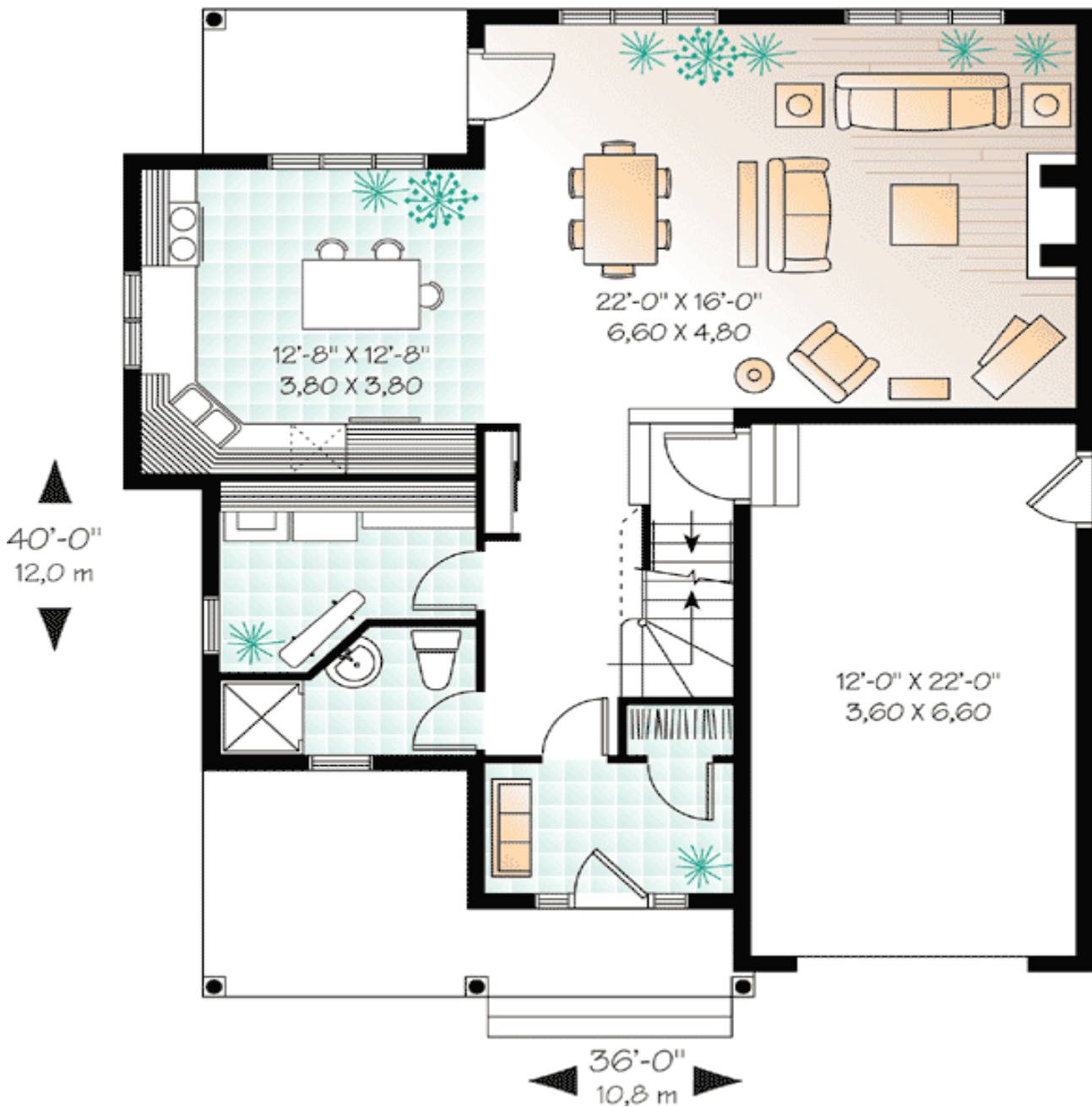
Standard Foundations: Basement

Alternate Foundations: Slab (\$295), Crawl (\$295)

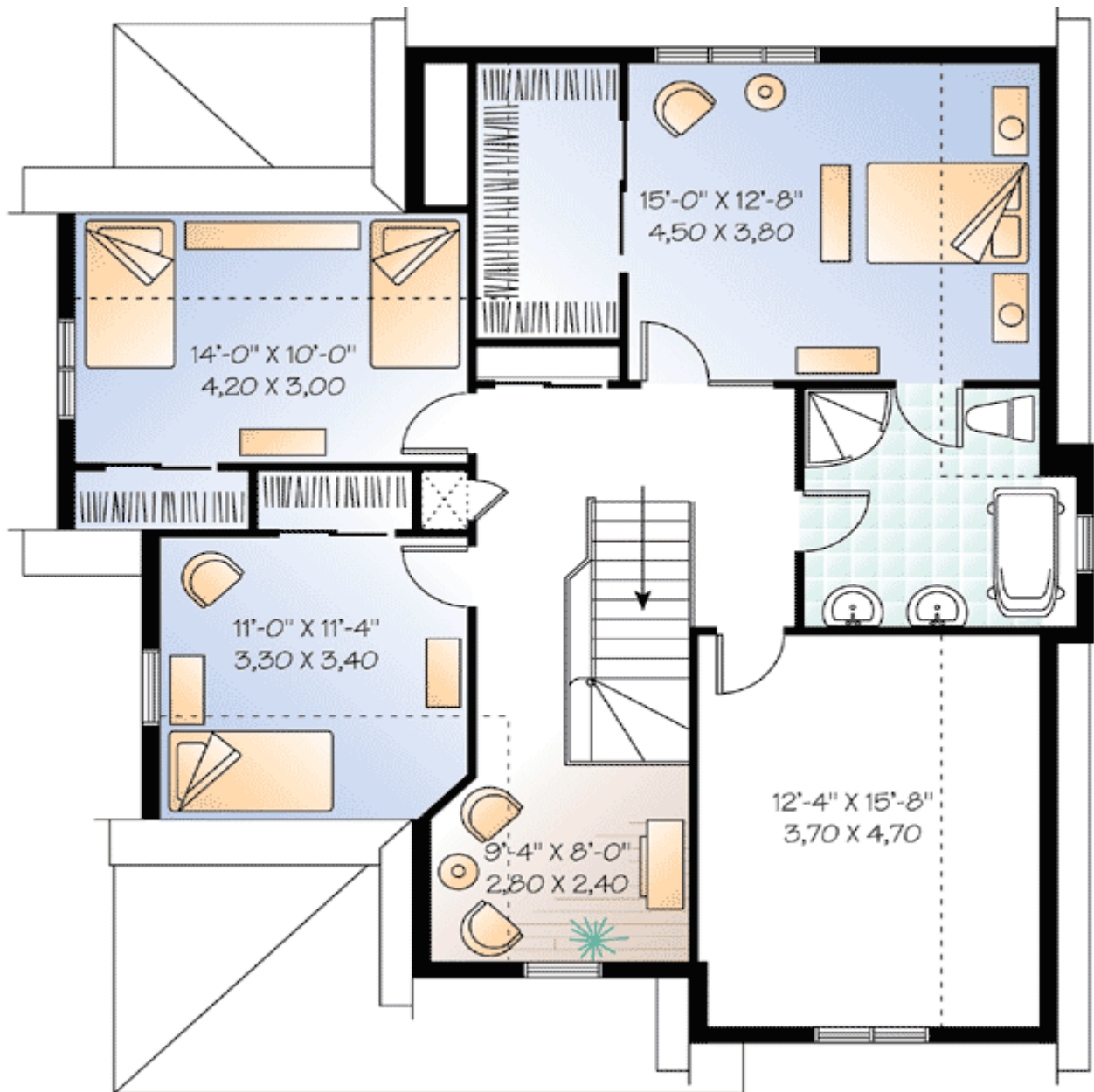
Special Features: Narrow Lot, PDF, Bonus Room, CAD Available

One Set	Five Sets	Eight Sets	Reproducible	PDF File	CAD
\$649	\$689	\$719	\$949	\$949	\$1,600

Main Level



2nd Level



Rear View

