

Architectural Designs ...selling quality house plans for over 30 years.

Plan W35108GH: Great Views



House plans are Copyright © 2009 by our architects and designers.

- This open-concept floor plan, perfect for a sloping lot, imparts an air of spaciousness. A loft and volume ceilings, in addition to a multitude of windows, highlight the sense of openness in this house plan.
- The covered front porch extends functional spaces to the outside, as does the rear deck.
- The chef will enjoy the walk-in pantry and corner windows. The peninsula bar creates an efficient space for dining and socializing.
- Conveniently located on the main floor, the master bedroom has his and her closets.
- A loft overlooking the great room, two bedrooms and a shared bath plus storage round out the second floor.
- Ceilings: 9' lower level and first floor; 9'5 5/8" second floor.
- Related Plans: Building in reverse? See house plan 35324GH. Need a crawlspace? See 35355GH.
- Need an attached two-car garage? See house plan 35312GH. Get a two-car drive-under garage with house plan 35313GH.
- Other related house plans include 35259GH and 35165GH with a finished lower level with a fireplace rec room, wet bar, storage and office space.

Style: Contemporary, Metric, Mountain, Northwest, Vacation

Total Living Area: 2281

Main Flr.: 1436

2nd Flr.: 845

Basement Unfinished: 1,436 sq. ft.

Total Square Feet: 3,717 sq. ft.

Bedrooms: 3

Full Bathrooms: 2

Half Bathrooms: 1

Width: 53'

Depth: 35'10"

Maximum Ridge Height: 32'6"

Exterior Walls: 2x6

Ceiling Height:

Main Floor: 9'

Lower Floor: 9'

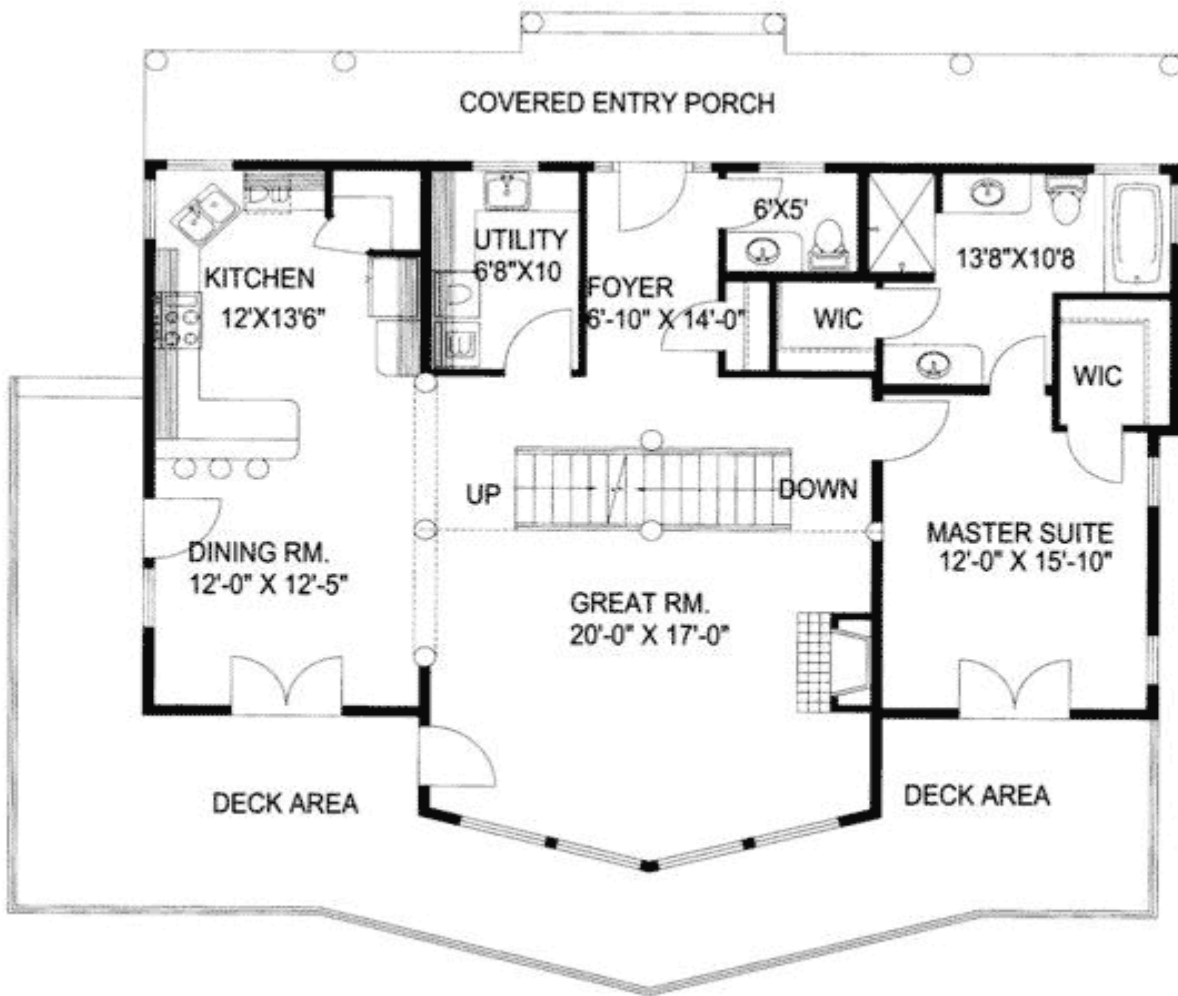
2nd Floor: 9'6"

Standard Foundations: Daylight

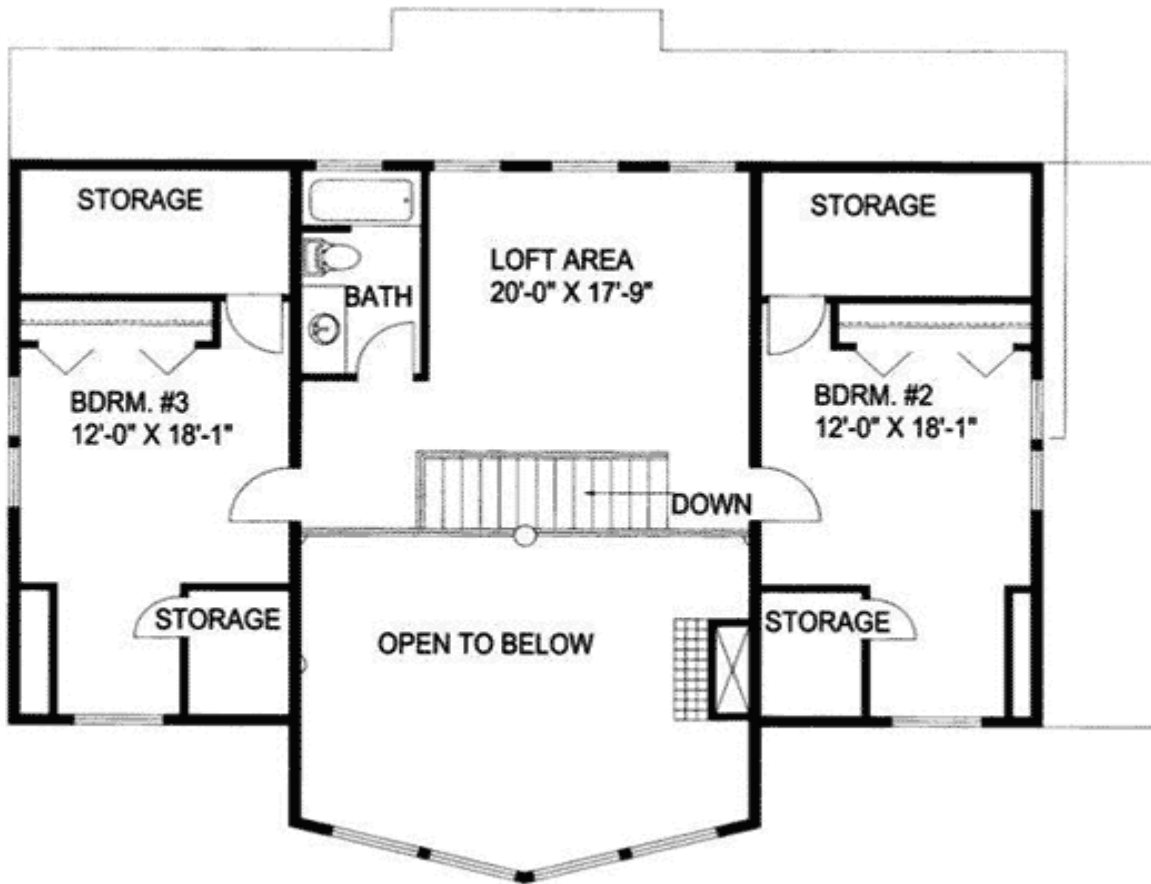
Special Features: PDF, Sloping Lot, CAD Available, 1st Floor Master Suite, Loft, Wrap Around Porch, Photo Gallery

Five Sets	Eight Sets	Reproducible	PDF File	CAD
\$725	\$820	\$750	\$900	\$900

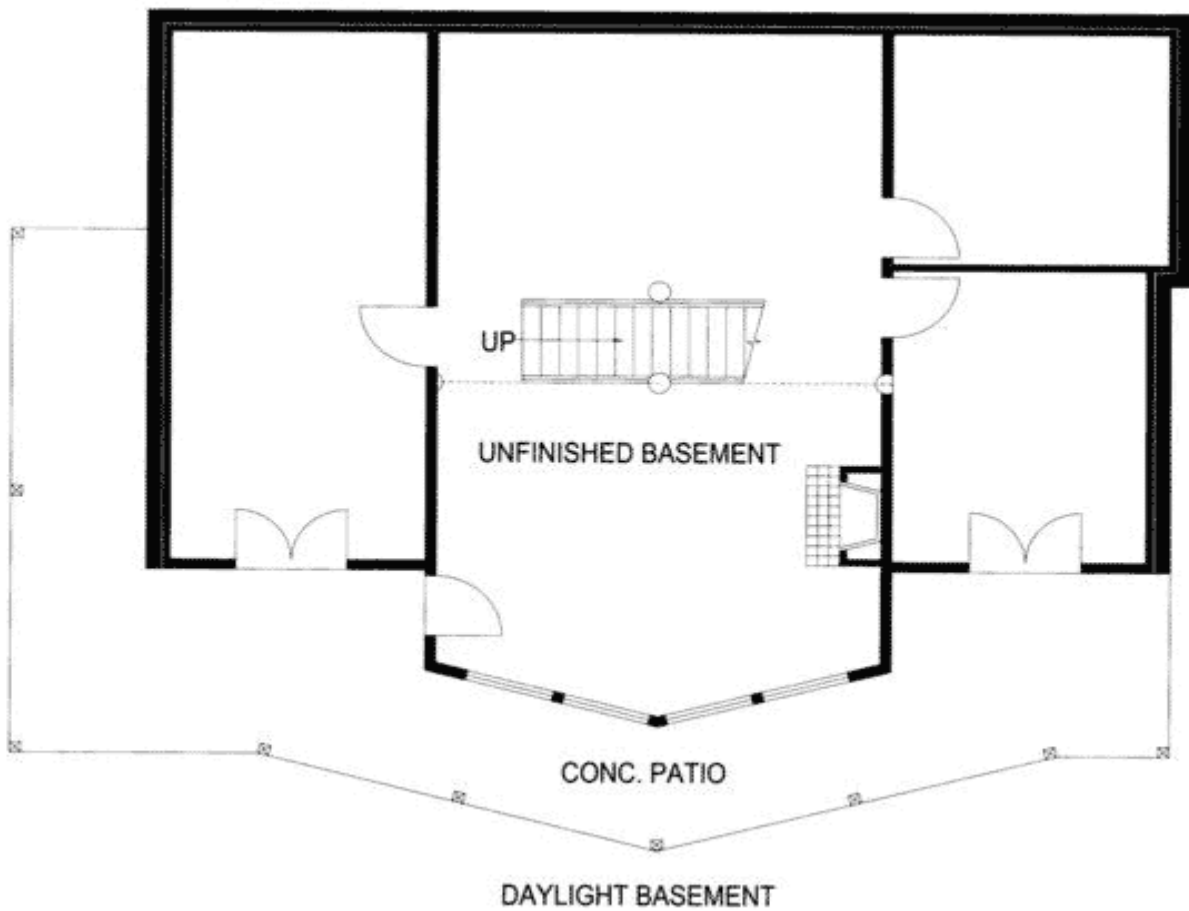
Main Level



2nd Level



Lower Level



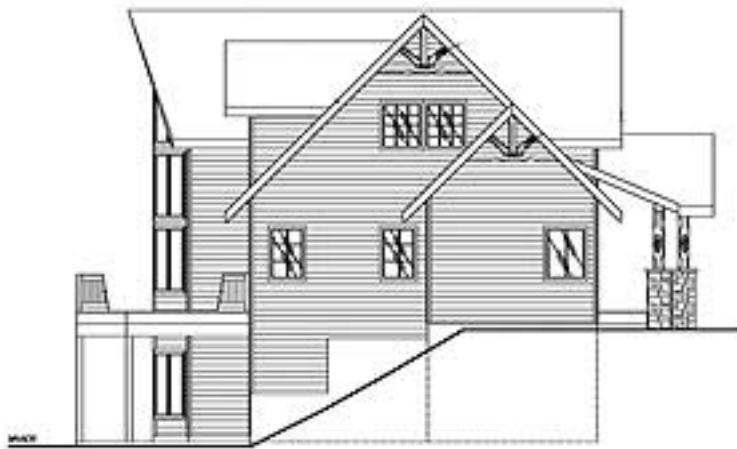
Elevation #2



Sides/Rear



REAR ELEVATION



LEFT SIDE ELEVATION



RIGHT SIDE ELEVATION

Great Room

