

# Architectural Designs ...selling quality house plans for over 30 years.

Plan W69182AM: Reverse Living for a Flat, Narrow Lot



House plans are Copyright © 2009 by our architects and designers.

- This is reverse living (i.e. living spaces above) at its best. Ideal for the city dweller and with a width of only 22 feet-- virtually no lot is too narrow. The stylish exterior, with a covered porch, will fit in any neighborhood
- A vaulted living room features a fireplace, built-in shelves and media center. A wall of windows overlooking the back porch extends the room further. Adjacent to the kitchen, a large window seat creates a cozy dining area. In the corner, the kitchen provides plenty of cabinet space and an optional island.
- The vaulted master suite faces the front of the home displaying another tall window. Boasting a walk-in closet and private bath, this room offers total comfort.
- Two additional bedrooms and a bathroom are located on the first floor to complete this great home.
- Related Plan: For an alternate master bedroom without the bumpout, see house plan 69183AM.

Style: Northwest

Total Living Area: 1421

Main Flr.: 558

2nd Flr.: 863

Total Square Feet: 1,663 sq. ft.

Attached Garage: 1 Car, 242 sq. ft.

Bedrooms: 3

Full Bathrooms: 2

Width: 22'

Depth: 46'

Maximum Ridge Height: 29'

Exterior Walls: 2x6

Ceiling Height:

Other: Vaulted Living Room & MBR

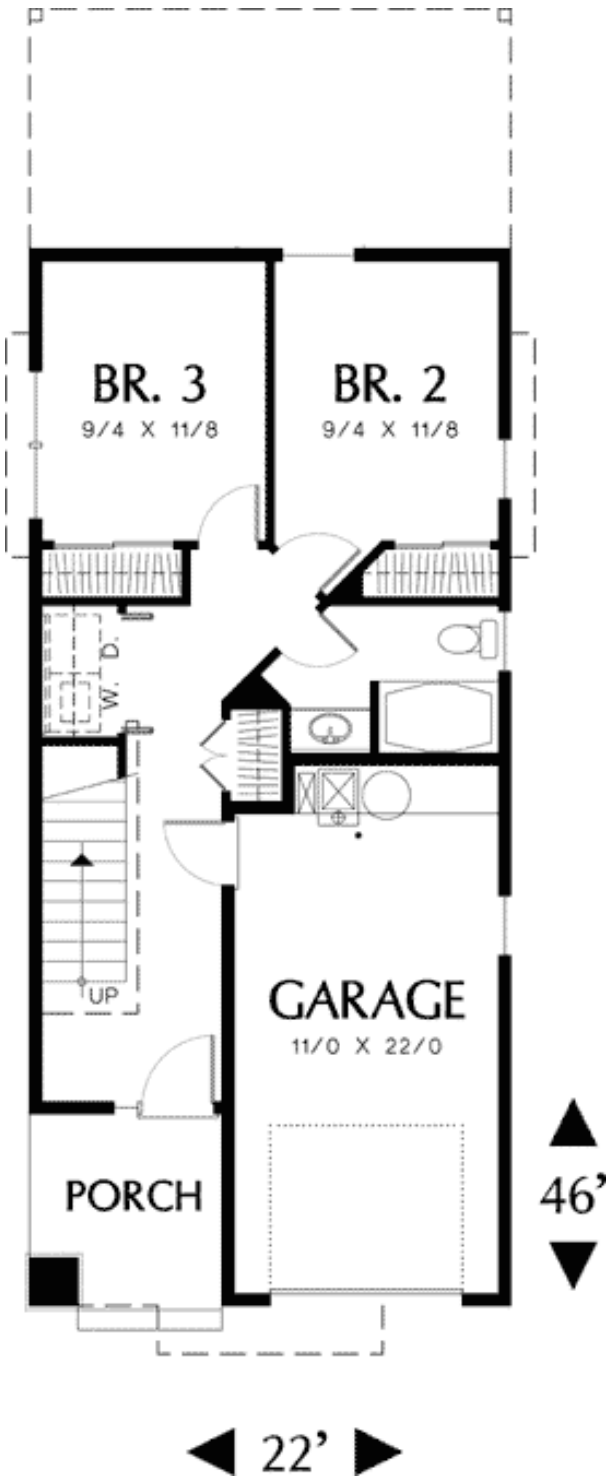
Standard Foundations: Crawl

Alternate Foundations: Slab (\$80), Basement (\$195)

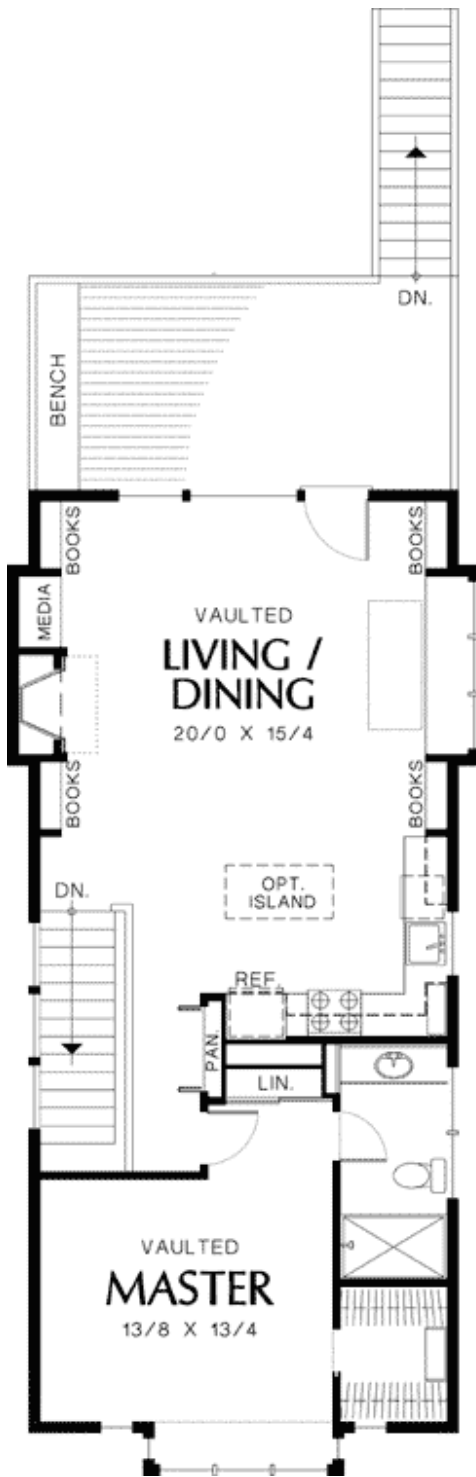
Special Features: CAD Available, Narrow Lot, Photo Gallery, PDF

One Set	Five Sets	Eight Sets	Reproducible	PDF File	CAD
\$475	\$550	\$595	\$800	\$800	\$1,350

Main Level



## 2nd Level



Rear View



# Architectural Designs ...selling quality house plans for over 30 years.

## Interior



Interior Vw2



Entry/Foyer



## Living Room



## Kitchen



Master BR

