

Plan W69112AM: Two Car Garage Cottage Plan



House plans are Copyright © 2009 by our architects and designers.

- Just because a design is reserved to a single floor, it need not be boxy or plain. This design is ample proof. Not only does its exterior appeal with thoughtful appointments, its interior is spacious and well laid out.
- A central foyer connects the rooms: a den, the kitchen/nook, the great room and the bedrooms. Both the master suite and the great room are vaulted. The great room features decorative columns, a fireplace and a media center.
- The dining area has sliding glass doors to a rear patio. A pantry with built-in shelves serves the kitchen. The den can be designed with a closet or a built-in desk, as you prefer.
- Bedroom 2 has both a window seat and a built-in bookcase. The two-car garage contains a large shop area. Don't overlook the master bath, where a spa tub waits to pamper.
- Related Plan: Building in reverse? See house plan 69017AM.

Style: Cottage, Craftsman

Total Living Area: 1975

Main Flr.: 1975

Total Square Feet: 2,585 sq. ft.

Attached Garage: 3 Car, 610 sq. ft.

Bedrooms: 2

Full Bathrooms: 2

Width: 52'

Depth: 58'

Maximum Ridge Height: 24'

Exterior Walls: 2x6

Ceiling Height:

Main Floor: 9'

Other: Vaulted Great Room & MBR

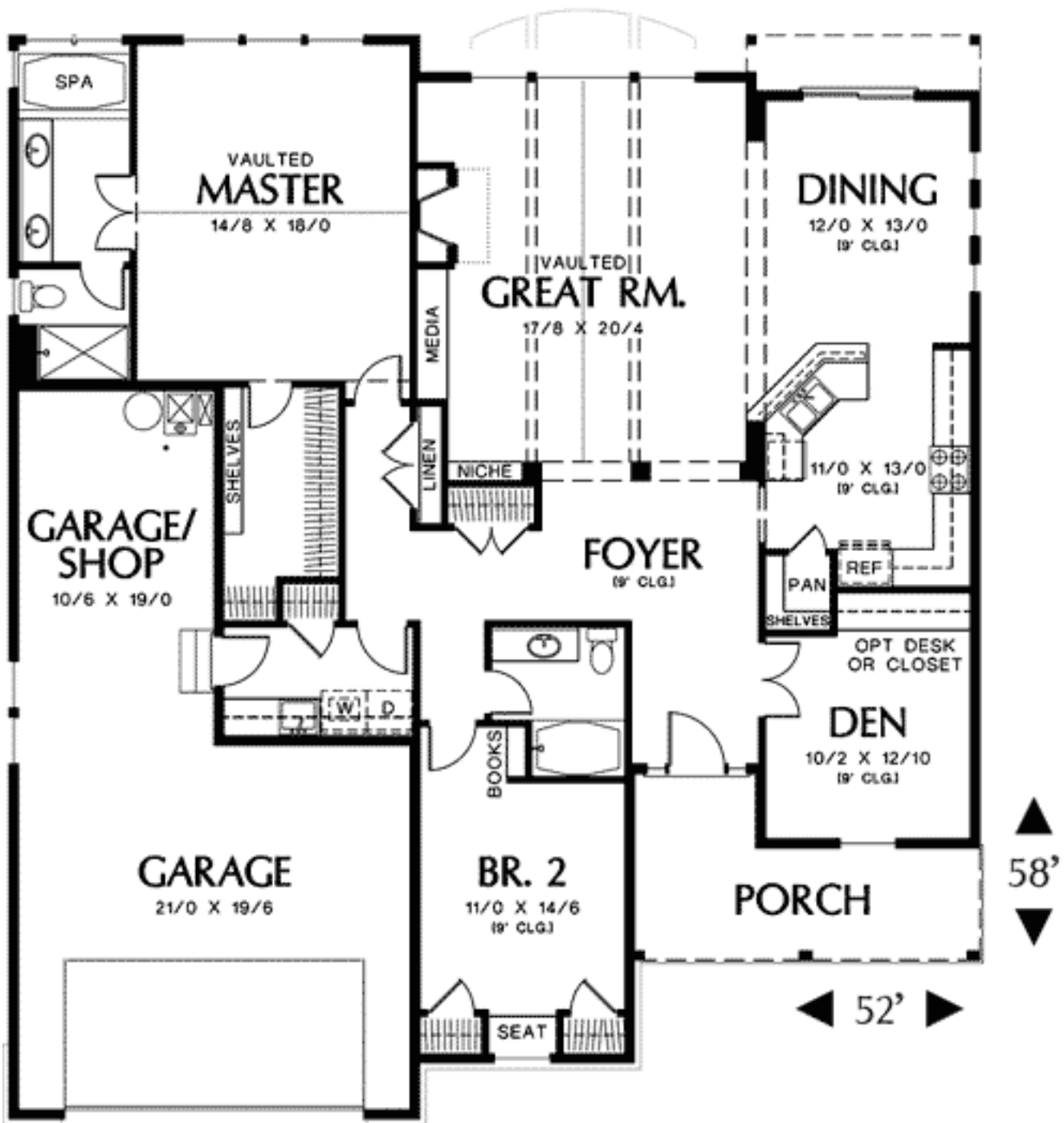
Standard Foundations: Crawl

Alternate Foundations: Slab (\$95), Basement (\$225)

Special Features: Butler Walk-in Pantry, 1st Floor Master Suite, CAD Available, PDF, Photo Gallery, Den-Office-Library-Study

One Set	Five Sets	Eight Sets	Reproducible	PDF File	CAD
\$525	\$595	\$650	\$850	\$850	\$1,450

Main Level



Architectural Designs ...selling quality house plans for over 30 years.

Photo



Elevation #2



Rear View

