

Plan W6352HD: Option to Grow



House plans are Copyright © 2009 by our architects and designers.

- An impressive covered entry introduces this stucco traditional home plan, which provides the option of a fourth bedroom and third bathroom next to the covered patio in the rear. Ten-foot ceilings are found throughout the design, adding volume and light.
- Formal living and dining rooms are placed on either side of the grand foyer, which continues back to the family room with its fireplace bordered by built-ins. Here, a large sliding glass window overlooks the patio and a possible backyard pool.
- The family room is open to both the bayed breakfast nook, surrounded by mitered glass, and the kitchen with its angled eating bar and pantry closet.
- Also overlooking the backyard, the spectacular master suite includes an oversized bath with a walk-in closet, a step-down doorless shower, a corner garden tub and two sinks separated by knee space.
- On the other side of the house, the second full bath serves the secondary bedrooms and the rest of the house.
- Related Plans: For a slightly alternate elevation, see house plan 6320HD.
- Gain a 4th bedroom and extra bath with house plan 6303HD.
- And get a 3-car garage with house plan 63159HD.

Style: Florida, Southern

Total Living Area: 1783

Main Flr.: 1783

Covered Patio: 265 sq. ft.

Entry: 14 sq. ft.

Total Square Feet: 2,471 sq. ft.

Attached Garage: 2 Car, 409 sq. ft.

Bedrooms: 3

Full Bathrooms: 2

Width: 60'

Depth: 45'

Maximum Ridge Height: 20'6"

Exterior Walls: 2x4

Ceiling Height:

Main Floor: 10'

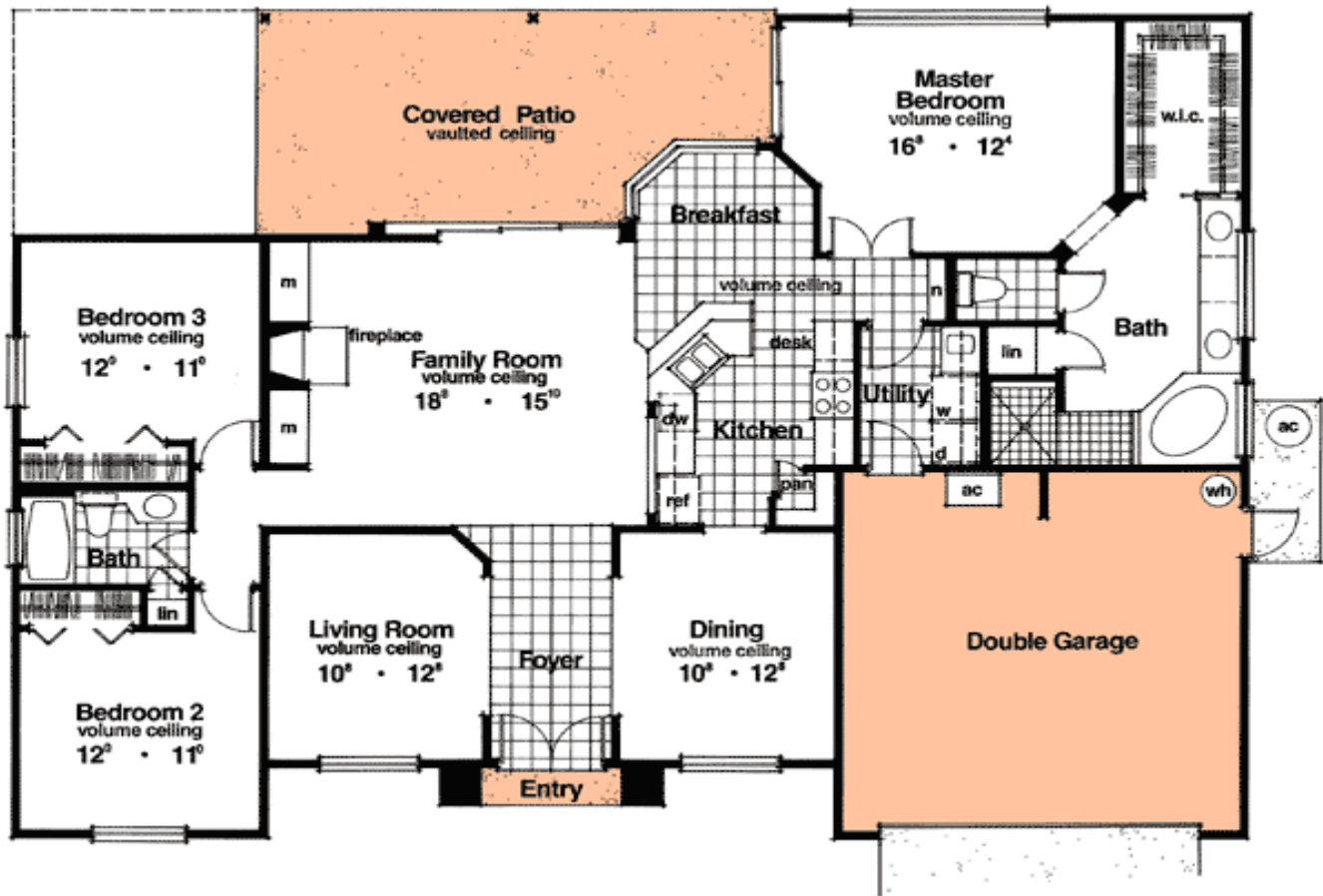
Standard Foundations: Slab

Alternate Foundations: Basement (\$675), Crawl (\$675)

Special Features: 1st Floor Master Suite, CAD Available, PDF

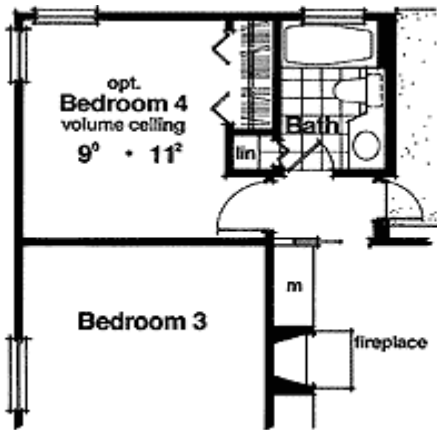
One Set	Five Sets	Eight Sets	Reproducible	PDF File	CAD
\$485	\$545	\$590	\$710	\$710	\$1,420

Main Level



Optional

Optional 4th bedroom



Rear View



Living Room



Family Room



Master BR

