

Architectural Designs ...selling quality house plans for over 30 years.

Plan W69065AM: Classic Craftsman Home Plan



House plans are Copyright © 2009 by our architects and designers.

- Classic Craftsman tradition shines through in this spectacular home plan. The exterior is detailed with cedar shingles, stone and partial columns defining the front porch.
- Interior spaces promise fine livability, with two master suites and plenty of cozy rooms for private time. A formal dining room and a study flank the two-story foyer. Both rooms have wide Mission-style windows overlooking the front porch. An open great room features two sets of double doors to the rear yard, a fireplace and a built-in media center. More casual dining takes place in the breakfast nook, which is open to an island kitchen and leads to a vaulted porch.
- One master suite is found on the first floor. It glows with appointments, from double-door access to the rear yard to a fine bath with spa tub, separate shower and double sinks. The second master suite, on the second floor, holds a window seat and a private bath with spa tub. Two additional bedrooms--or make one a study--share a full compartmented bath with private vanities for each bedroom. The four-car garage connects to the main house at a laundry/mud room with half-bath, coat closet, built-in bench and washer/dryer space. Extra room in the garage can be used for a workshop or as storage space.
- Related Plan: For an alternate version, see house plan 69002AM.

Style: Craftsman, Luxury, Northwest, Premium Collection

Total Living Area: 3457

Main Flr.: 2222

2nd Flr.: 1235

Total Square Feet: 4,770 sq. ft.

Attached Garage: 4 Car, 1,313 sq. ft.

Bedrooms: 4, 3

Full Bathrooms: 3

Half Bathrooms: 2

Width: 70'

Depth: 101'

Maximum Ridge Height: 26'

Exterior Walls: 2x6

Ceiling Height:

Main Floor: 9'

Other: 2-Story Foyer; Vaulted Great Room & Porch

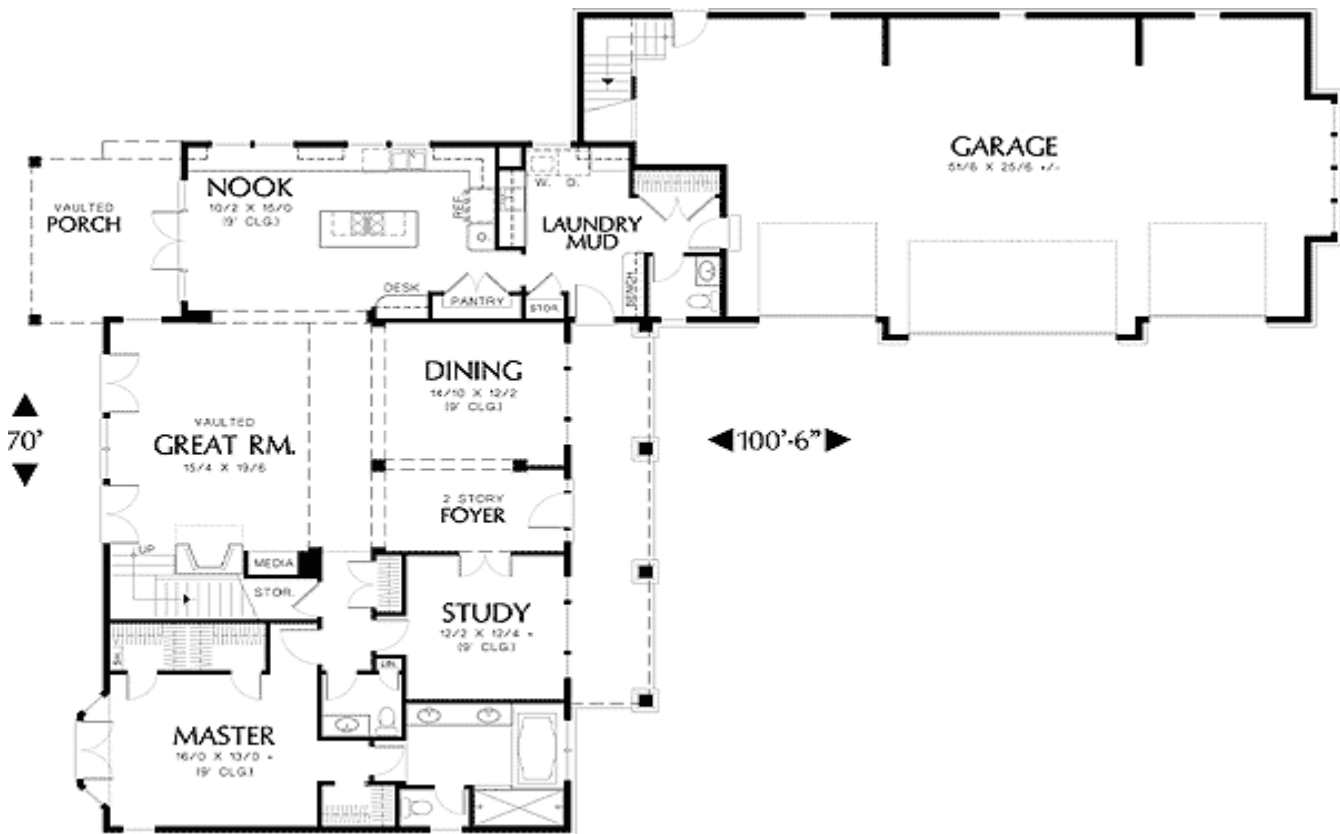
Standard Foundations: Crawl

Alternate Foundations: Slab (\$140), Basement (\$295)

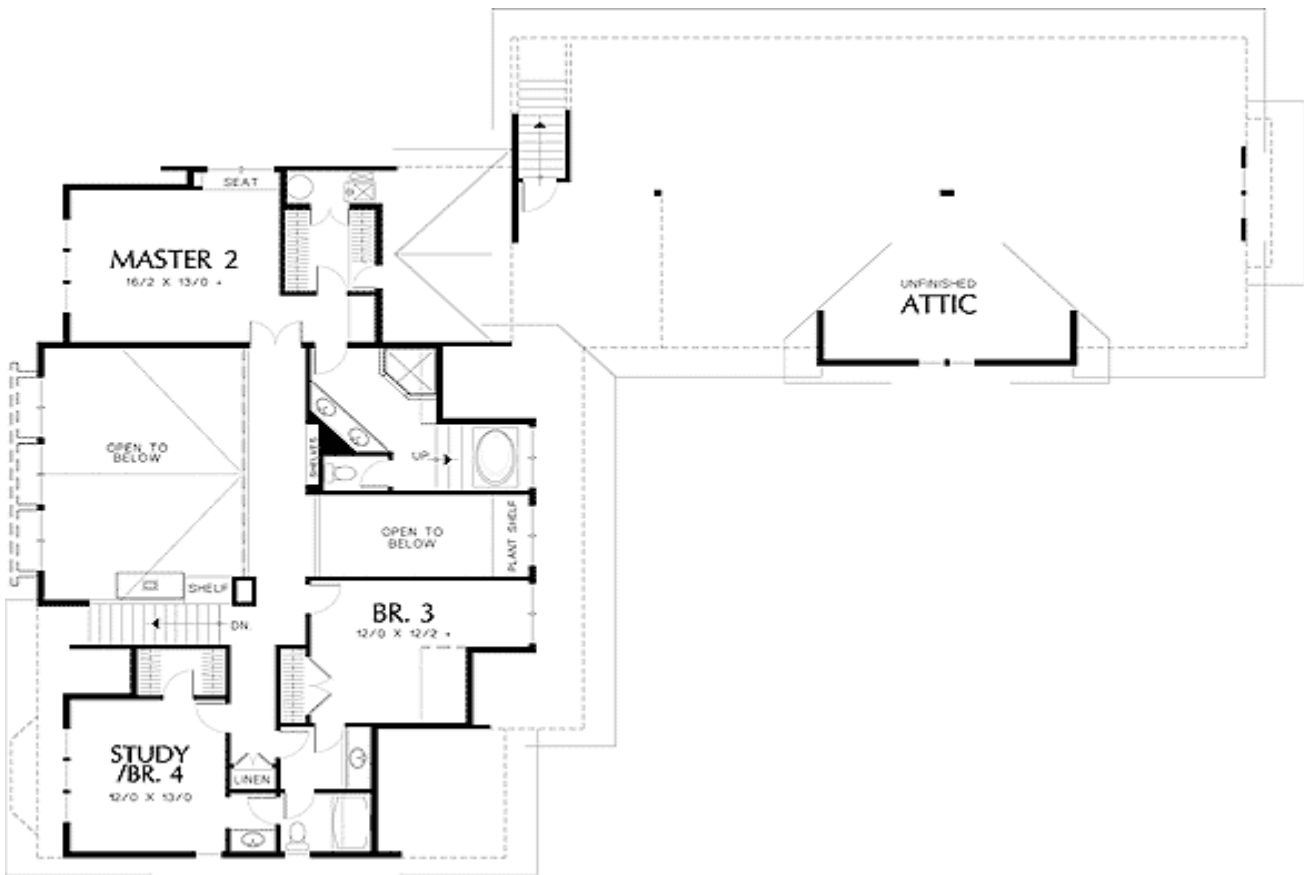
Special Features: Photo Gallery, 1st Floor Master Suite, PDF, CAD Available, Corner Lot, Den-Office-Library-Study

| | | | | | |
|---------|-----------|------------|--------------|----------|---------|
| One Set | Five Sets | Eight Sets | Reproducible | PDF File | CAD |
| \$695 | \$750 | \$850 | \$1,200 | \$1,200 | \$1,850 |

Main Level



2nd Level



Architectural Designs ...selling quality house plans for over 30 years.

Photo



Photo #2



Photo #3



Architectural Designs ...selling quality house plans for over 30 years.

Elevation #2



Rear View

