

Plan W7136H: Contemporary Ranch



House plans are Copyright © 2009 by our architects and designers.

- Designed for comfort and energy efficiency, this angled contemporary ranch saves on heating and cooling bills through its south-facing sunroom and other energy-saving features. Oversized windows and doors to the rear brighten the open, flowing spaces and bring in solar energy.
- A striking front canopy leads to a central reception area. The focal point of the design is a dramatic hexagonal core crowned by a domed ceiling with a skylight. Notice the free-standing fireplace.
- A vaulted ceiling tops the informal area, warmed by a second fireplace. Here, the family room, dinette and kitchen are separated only by a peninsula counter with a circular eating bar. Optionally, a wall opening with folding doors can link the family room to the formal space.
- Located in their own wing, three bedrooms share two full baths. The master bath is appointed with a whirlpool tub and a separate shower. A private terrace lies off the master bedroom.
- Without the sunroom, the living area totals 1,647 square feet, and the depth of the home decreases to 46 feet, one inch.
- Foundation options: basement or slab.

Style: Contemporary, Ranch

Total Living Area: 1756

Main Flr.: 1756

Basement Unfinished: 1,714 sq. ft.

Deck: 87 sq. ft.

Entry: 109 sq. ft.

Total Square Feet: 4,175 sq. ft.

Attached Garage: 2 Car, 509 sq. ft.

Bedrooms: 3

Full Bathrooms: 2

Width: 97'1"

Depth: 46'1"

Maximum Ridge Height: 17'

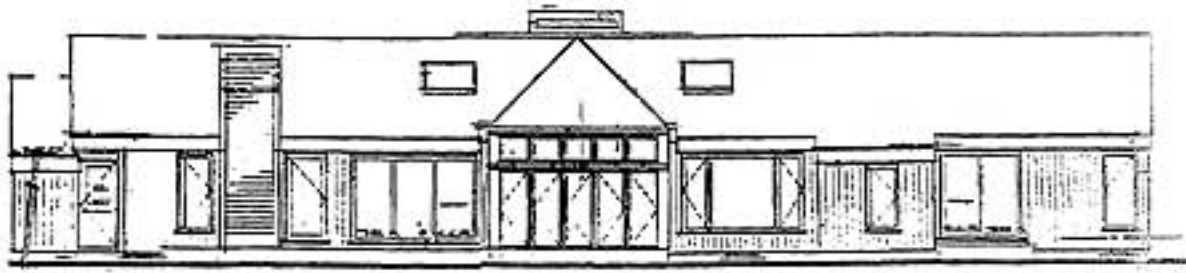
Exterior Walls: 2x4 or 2x6

Ceiling Height:

Main Floor: 8'
Other: 14'5 Living Room
Standard Foundations: Slab, Basement
Special Features: 1st Floor Master Suite

One Set	Five Sets	Eight Sets	Reproducible
\$450	\$505	\$550	\$670

Sides/Rear



REAR ELEV.



LEFT-SIDE ELEV.



RIGHT-SIDE ELEV.

Interior

