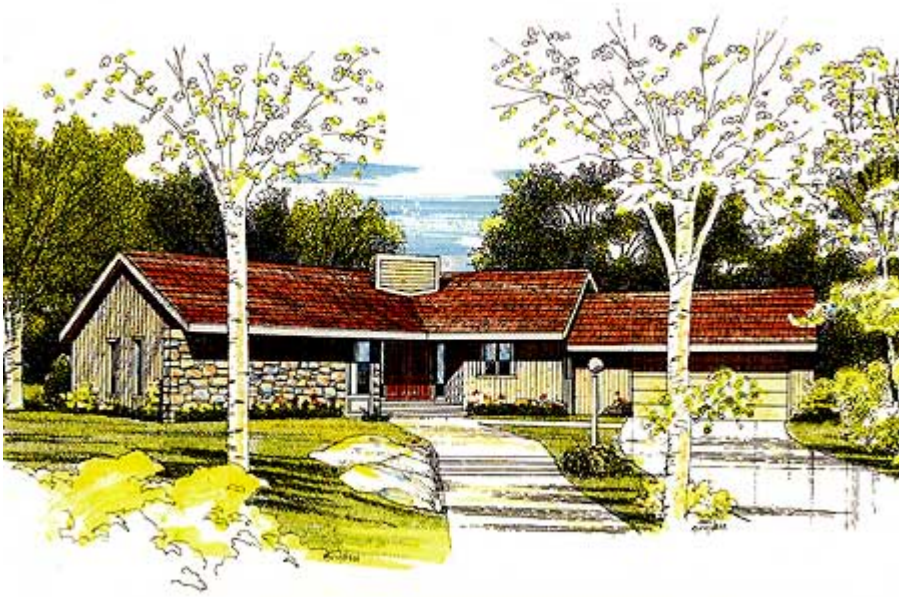


Plan W7080H: Solar Energy Design



House plans are Copyright © 2009 by our architects and designers.

- This passive solar energy design, with a hexagonal core, is angled to capture as much sunlight as possible. Finished in natural vertical cedar planks and stone veneer, this contemporary three-bedroom ranch requires minimum maintenance.
- Double doors at the entry open onto a stunning six-sided living/dining room. The formal area, with its domed ceiling and free-standing fireplace, is enhanced by two skylights and three sets of sliding glass doors, one of which leads to a glass-enclosed sunroom.
- The bright U-shaped kitchen is an extension of the den; sliding glass doors lead to one of the backyard terraces.
- The master bedroom, in a quiet sleeping wing, has its own private terrace, ample closets and a luxurious bath complete with a whirlpool tub. Two additional bedrooms complete this plan.
- Foundation: optional slab or basement of 1,505 square feet.

Style: Contemporary, Ranch

Total Living Area: 1495

Main Flr.: 1495

Basement Unfinished: 1,505 sq. ft.

Entry: 114 sq. ft.

Mud Room:

Total Square Feet: 3,730 sq. ft.

Attached Garage: 2 Car, 552 sq. ft.

Bedrooms: 3

Full Bathrooms: 2

Width: 35'4"

Depth: 53'1"

Maximum Ridge Height: 16'

Exterior Walls: 2x4 or 2x6

Ceiling Height:

Standard Foundations: Slab, Basement
Special Features: 1st Floor Master Suite, Narrow Lot

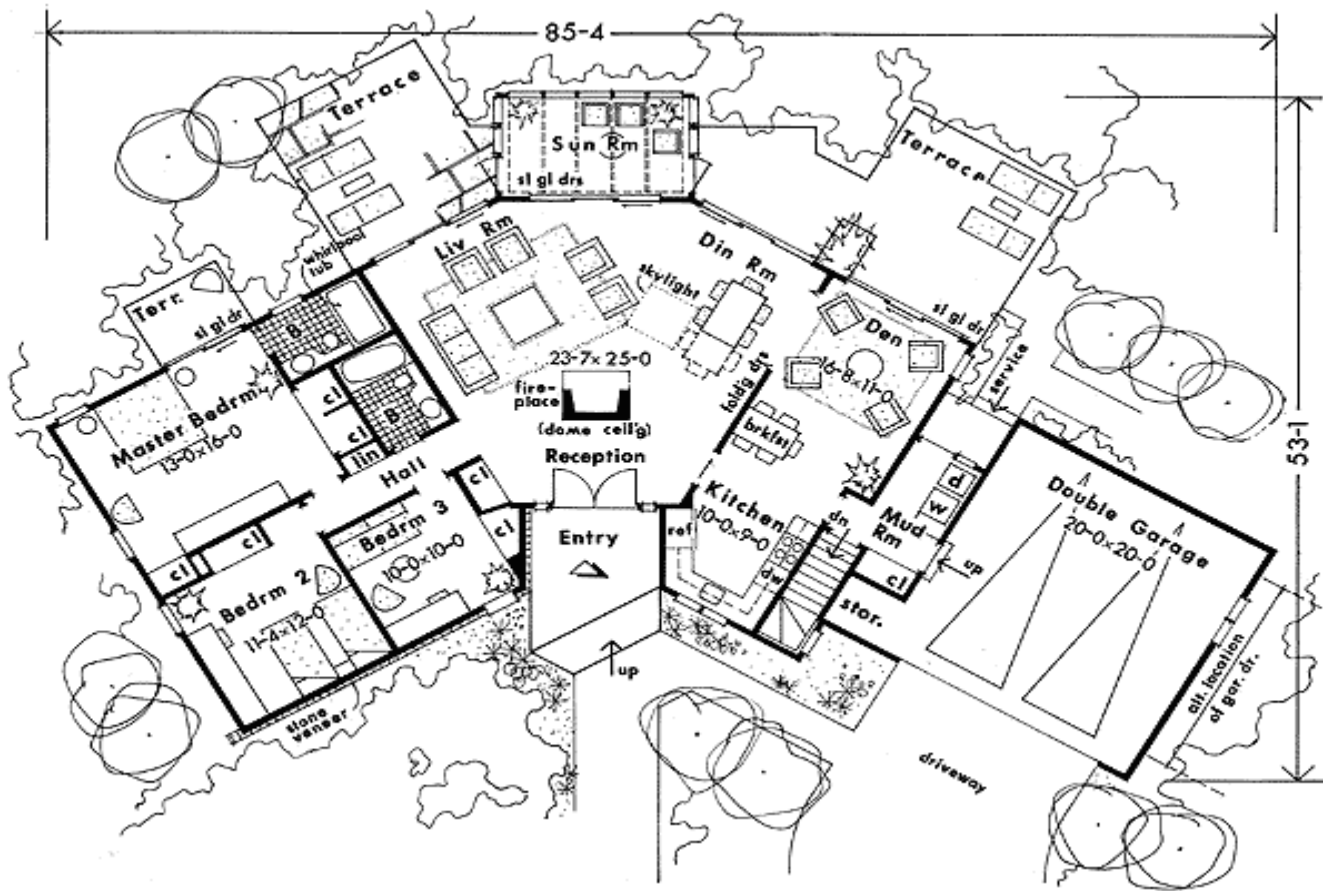
One Set
\$395

Five Sets
\$460

Eight Sets
\$505

Reproducible
\$605

Main Level



Interior

