

Architectural Designs ...selling quality house plans for over 30 years.

Plan W51090MM: Compact French Country



House plans are Copyright © 2009 by our architects and designers.

- The great room has gas logs as well as built-in cabinets and 12' trayed ceilings that make it a great place to relax and spend time with family and friends.
- The rear covered porch provides a great space for those summer cookouts as well as being close to the kitchen.
- A dining room and breakfast area are provided for formal or informal meals.
- The always popular bonus room provides an excellent space for storage or future expansion.
- The master suite features a wonderful bathroom with large walk-in closets.
- The two car garage features space for real-sized vehicles.
- Related Plans: Need a slab or crawlspace version of this plan? See 51054MM.
- For an alternate elevation, see house plans 51029MM and for an alternate layout, see house plan 51048MM.

Style: European, French Country

Total Living Area: 2218

Main Flr.: 2218

Bonus: 376 sq. ft.

Front Porch: 186 sq. ft.

Rear Porch: 164 sq. ft.

Total Square Feet: 3,635 sq. ft.

Attached Garage: 2 Car, 691 sq. ft.

Bedrooms: 4

Full Bathrooms: 2

Half Bathrooms: 1

Width: 65'6"

Depth: 80'

Maximum Ridge Height: 23'9"

Exterior Walls: 2x4

Ceiling Height:

Main Floor: 9'

Other: 11'-12' Tray Great Room; 9'-10' Tray MBR

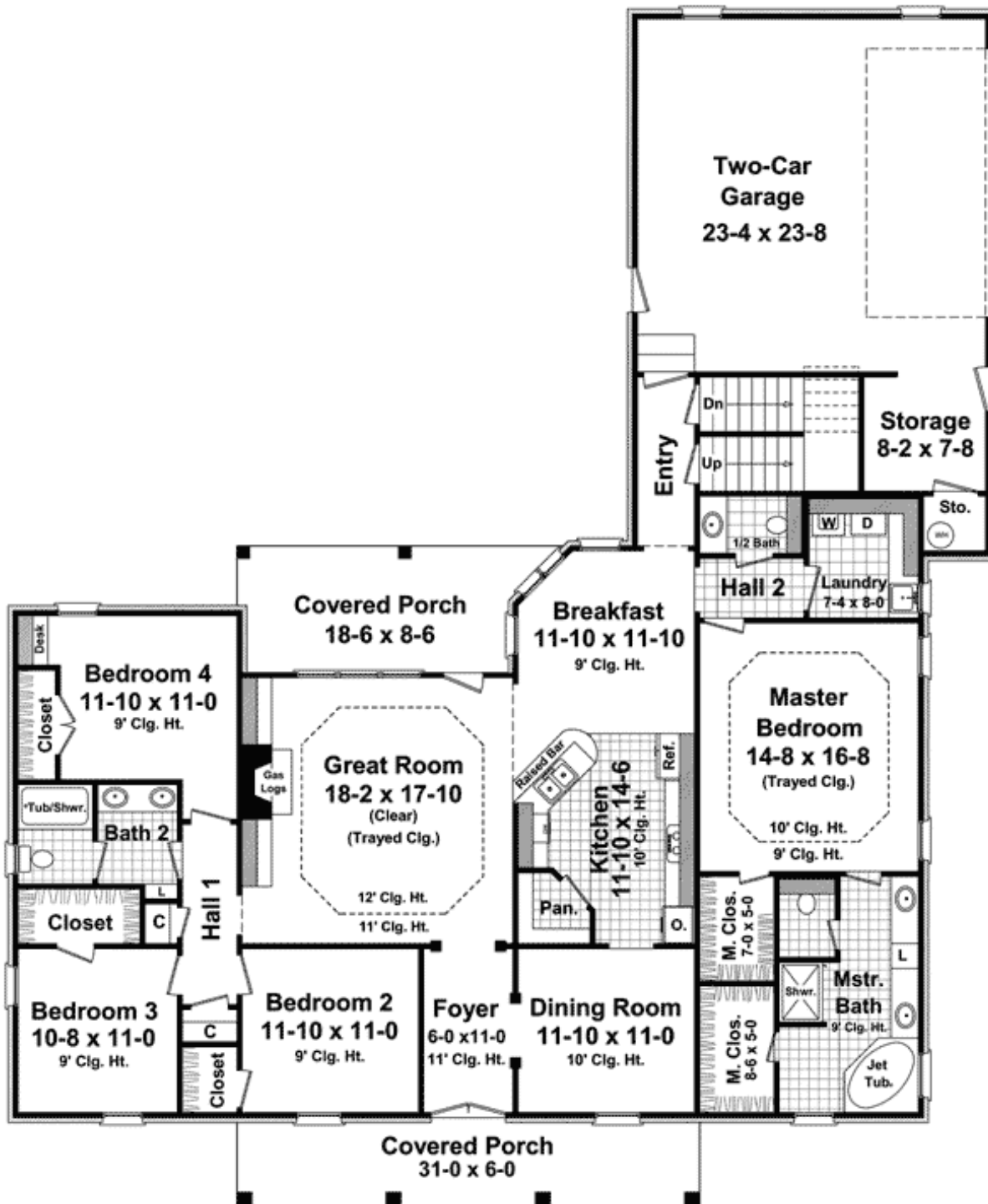
Standard Foundations: Basement

Alternate Foundations: Slab (\$125), Crawl (\$125)

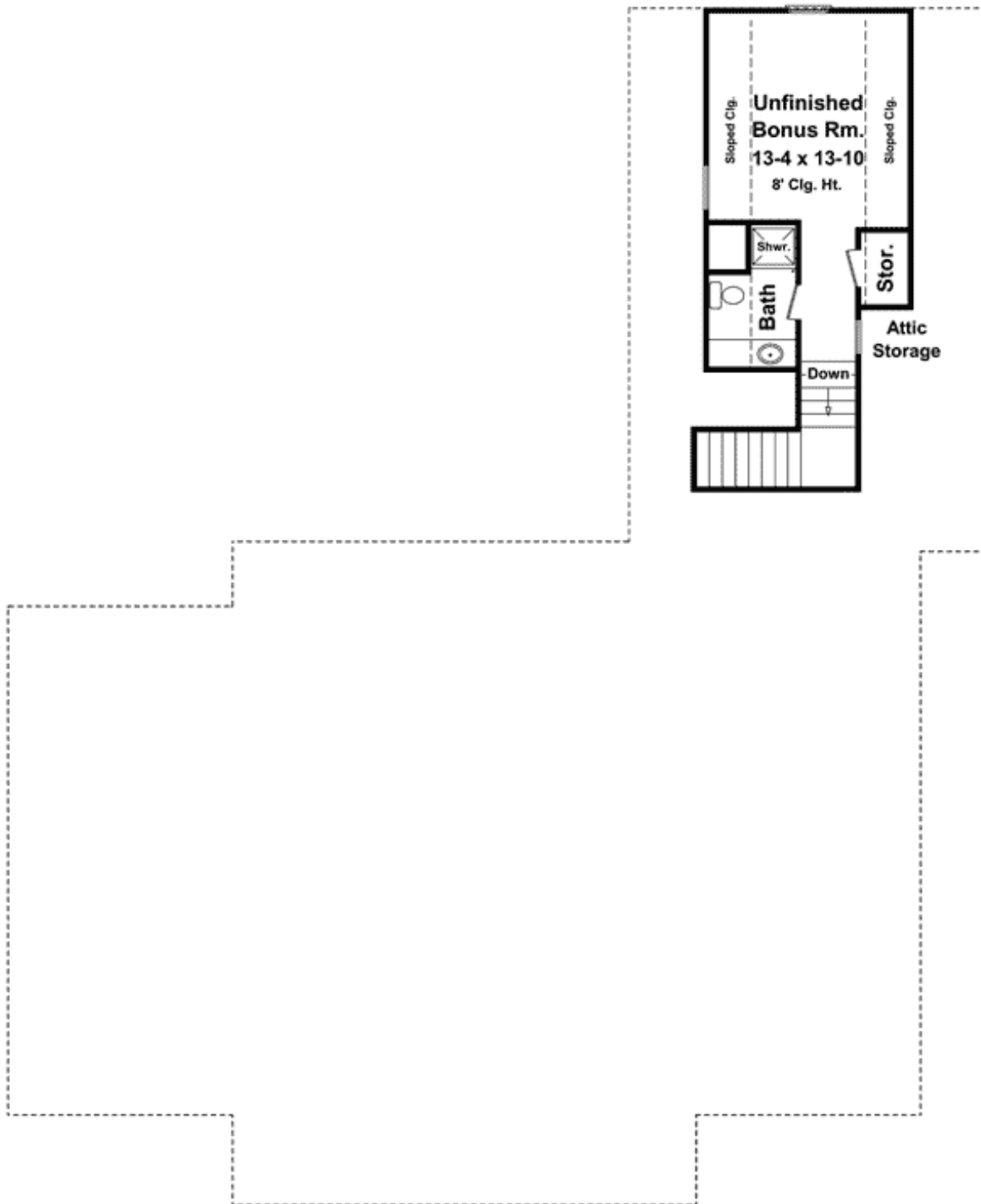
Special Features: Corner Lot, PDF, Bonus Room, Photo Gallery, 1st Floor Master Suite, CAD Available, Butler Walk-in Pantry, Split Bedrooms

One Set	Five Sets	Eight Sets	Reproducible	PDF File	CAD
\$645	\$705	\$840	\$865	\$865	\$1,415

Main Level



Bonus



Rear View



Great Room



Dining Room

