

# Architectural Designs ...selling quality house plans for over 30 years.

Plan W21178DR: Contemporary Vacation Home Design



House plans are Copyright © 2009 by our architects and designers.

- With its ability to sleep many people, this contemporary home plan would make an ideal vacation home. Extensive deck and patio space allow for easy outdoor living; lots of windows let in the light.
- Besides the open kitchen and living area, the main level houses a master suite with a whirlpool tub and separate shower. The second level comprises a bedroom loft that overlooks the living area.
- Note the fireplaces in both the living area and the downstairs family room or fifth bedroom. Also found downstairs are the second full bath and two more bedrooms.
- Ceilings: 9' first floor; 8' second floor.
- See these related house plans: 21090DR, 2143DR and 21075DR.

Style: Canadian, Contemporary, Metric, Mountain, Vacation

Total Living Area: 2243

Main Flr.: 937

2nd Flr.: 369

Lower Level: 937

Front Porch: 478 sq. ft.

Total Square Feet: 2,721 sq. ft.

Bedrooms: 4

Full Bathrooms: 2

Width: 34'4"

Depth: 28'8"

Maximum Ridge Height: 33'9"

Exterior Walls: 2x6

Ceiling Height:

Main Floor: 9'

2nd Floor: 8'

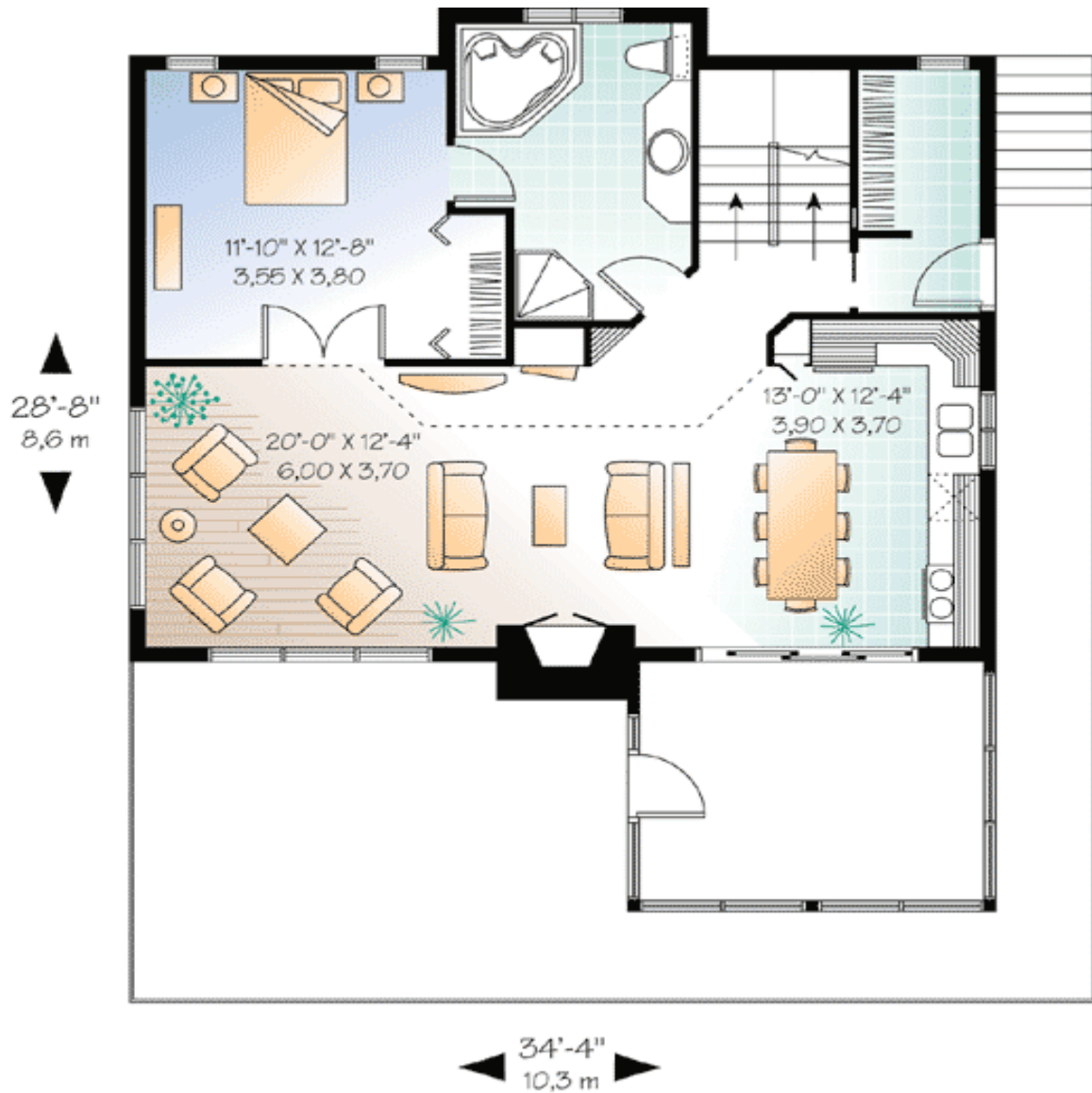
Standard Foundations: Walkout

Alternate Foundations: Slab (\$295), Basement (\$295), Crawl (\$295)

Special Features: Narrow Lot, PDF, Sloping Lot, 1st Floor Master Suite, CAD Available, Loft, Wrap Around Porch

One Set	Five Sets	Eight Sets	Reproducible	PDF File	CAD
\$699	\$739	\$769	\$949	\$949	\$1,655

## Main Level



2nd Level



Lower Level



Rear View

