

Architectural Designs ...selling quality house plans for over 30 years.

Plan W3835JA: Built-In Flexibility



House plans are Copyright © 2009 by our architects and designers.

- A covered front porch decorates the front elevation of this country design, ideal as a starter home, a getaway home or even a modest retirement home.
- Inside, the design offers flexible floor plans. with several choices: three bedrooms, one and a half baths, or two bedrooms and two baths. Bonus space on the second floor can be finished with a bath and two more bedrooms.
- The basic plan for the first floor includes an angled layout in which the living room opens to a striking angular kitchen-dining combination.
- When constructed with three first-floor bedrooms, the home includes a walk-in closet in the master bedroom and both a full bath and a powder room in the hall. The two-bedroom first-floor option includes a master suite with built-ins or a closet, plus a large bath with a walk-in closet and a garden tub. Bedroom two shares a hall bath.
- Ceilings: 9' standard.
- Foundation options: basement, slab or crawl space. Specify when ordering.

Style: Country

Total Living Area: 1040

Main Flr.: 1040

2nd Flr.: 597

Basement Unfinished: 1,040 sq. ft.

Bonus: 597 sq. ft.

Total Square Feet: 3,274 sq. ft.

Bedrooms: 3, 2

Full Bathrooms: 1

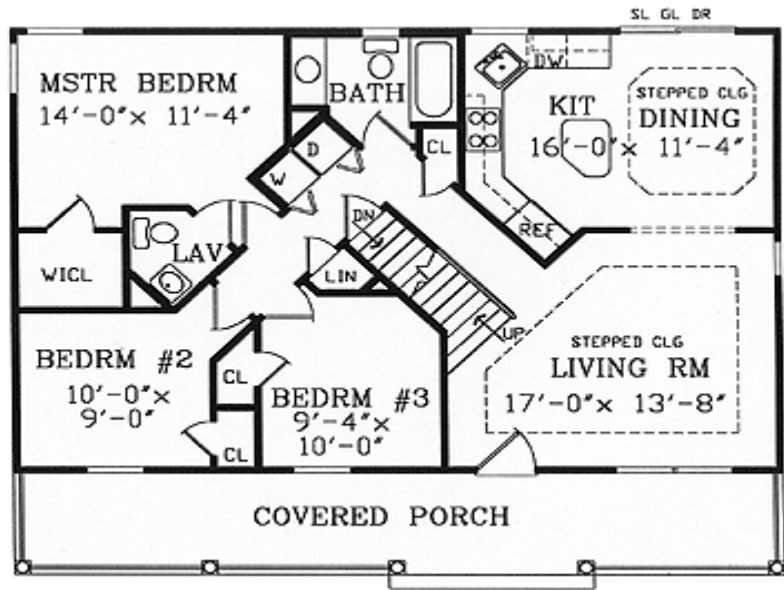
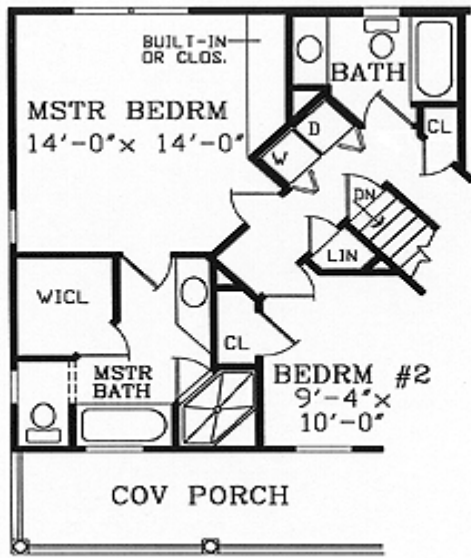
Half Bathrooms: 1

Width: 40'

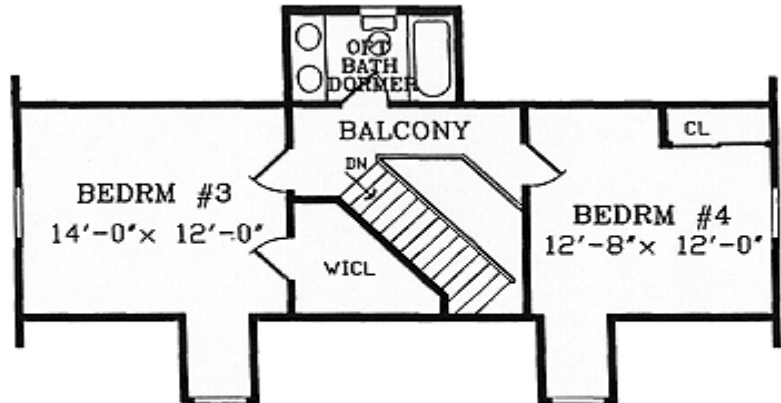
Depth: 32'
Maximum Ridge Height: 22'6"
Exterior Walls: 2x4
Ceiling Height:
Main Floor: 9'
Other: Stepped Living & Dining Rooms
Standard Foundations: Slab, Basement, Crawl
Alternate Foundations: Walkout (\$175)
Special Features: Bonus Room, PDF, Narrow Lot, 1st Floor Master Suite

Five Sets	Eight Sets	Reproducible	PDF File	CAD
\$495	\$530	\$645	\$645	\$1,145

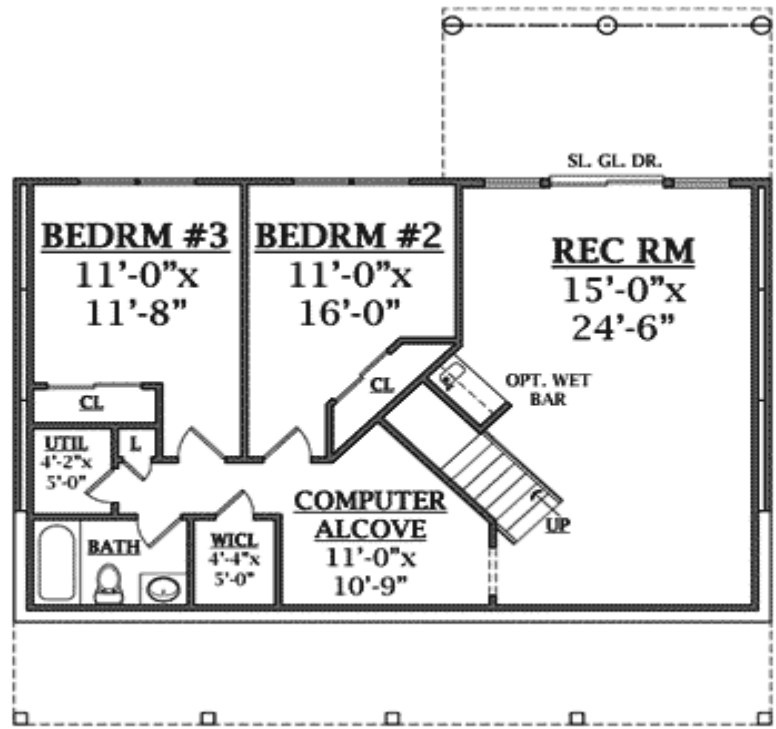
Main Level



2nd Level

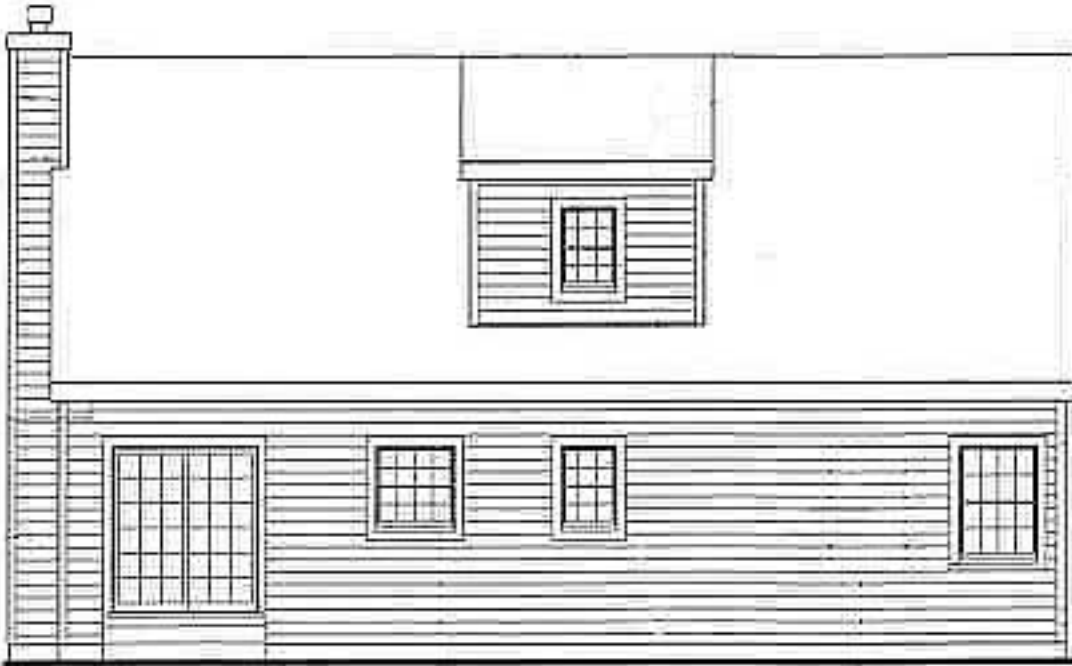


Lower Level



Walkout basement plan included with plans

Rear View



Interior

