

# Architectural Designs ...selling quality house plans for over 30 years.

Plan W8406JH: Lots of Built-ins



House plans are Copyright © 2009 by our architects and designers.

- Strongly influenced by European architecture, this hipped-roof design greets your guests with its twin dormers and columned front porch. Inside, a variety of built-ins are featured.
- The living room, with access to the covered porch and curved patio in back, has a 12-foot ceiling and a built-in media center next to the fireplace.
- A bayed eating area is separated from the kitchen by a peninsula eating bar. A built-in china cabinet graces the formal dining room.
- The secluded master bedroom enjoys private access to the patio, while the master bath is filled with luxuries, including a corner garden tub and an extra-large walk-in closet.
- Two bedrooms on the opposite side of the house share a bath.
- Ceilings: 9' standard.
- Foundation: slab and crawl space included.

Style: European, Southern, Traditional

Total Living Area: 1859

Main Flr.: 1859

Front Porch: 266 sq. ft.

Rear Porch: 194 sq. ft.

Storage: 15 sq. ft.

Total Square Feet: 2,867 sq. ft.

Attached Garage: 2 Car, 533 sq. ft.

Bedrooms: 3

Full Bathrooms: 2

Width: 64'10"

Depth: 57'5"

Maximum Ridge Height: 24'6"

Exterior Walls: 2x4

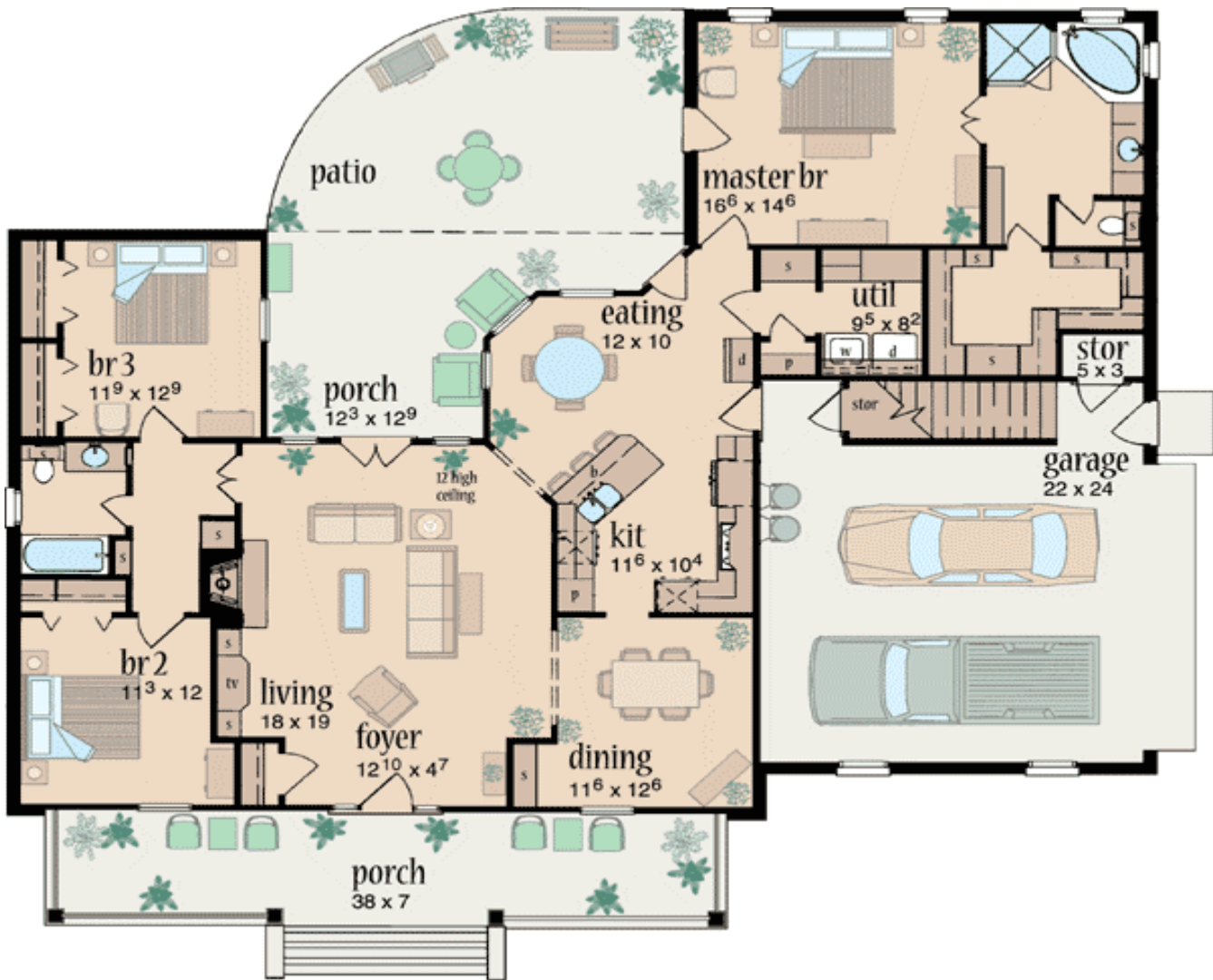
Ceiling Height:

Standard Foundations: Slab, Crawl

Special Features: CAD Available, 1st Floor Master Suite, PDF, Corner Lot, Split Bedrooms

One Set	Five Sets	Eight Sets	Reproducible	PDF File
\$450	\$505	\$550	\$705	\$1,050

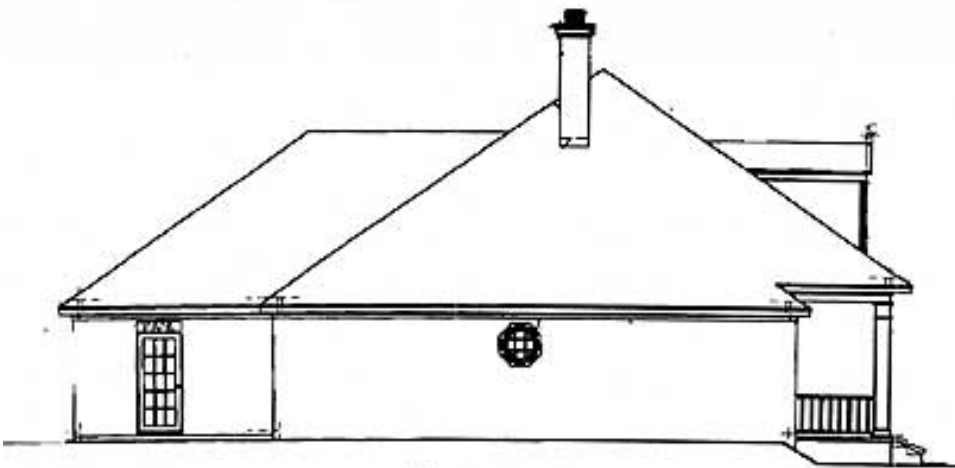
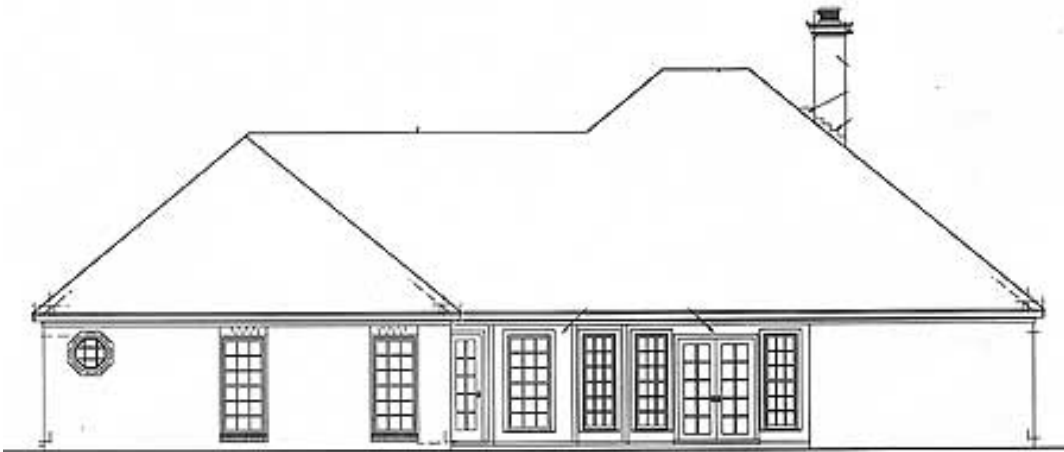
## Main Level



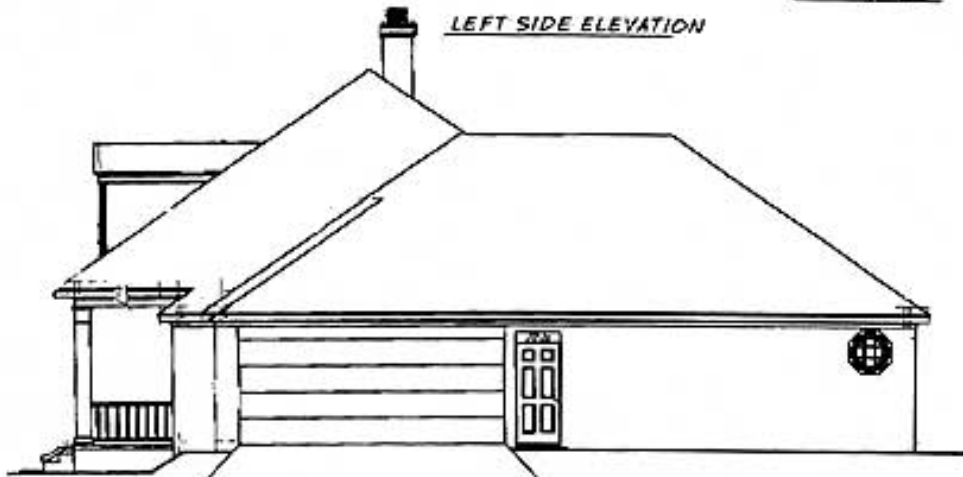
Elevation #2



Sides/Rear



*LEFT SIDE ELEVATION*



*RIGHT SIDE ELEVATION*